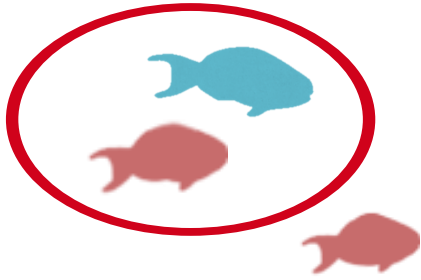


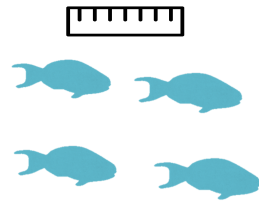


The Division of Aquatic Resources has the authority to ensure sustainable harvest based on the following principles:



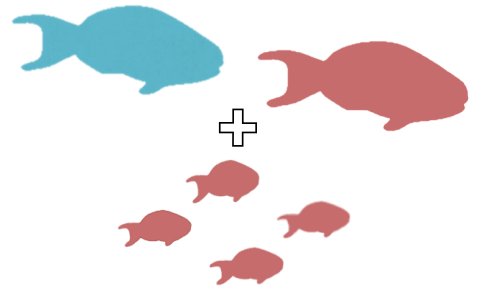
Take only what you need

Bag Limit



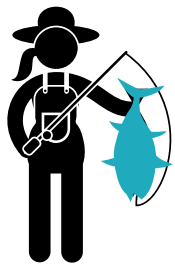
Let the keiki grow

Size Limit



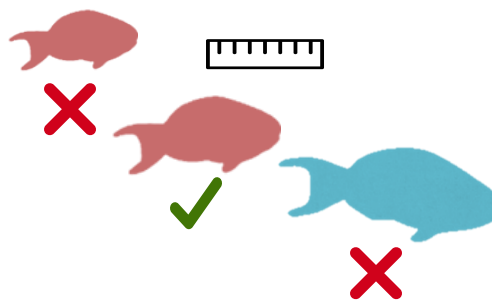
Let the fish and coral spawn

Closed Season



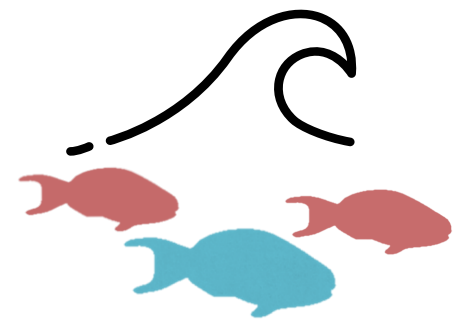
Use the right gear

Gear Regulations



The sweet spot:
catch medium fish

Slot Limit



Respect Local Rules

**Marine
Management Areas**



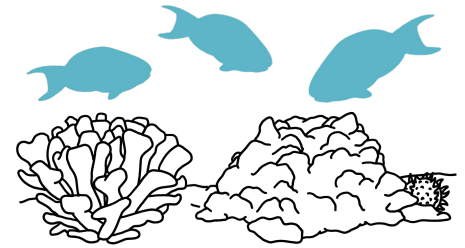
Other management actions that complement fishing regulations to ensure healthy reefs and abundant resources



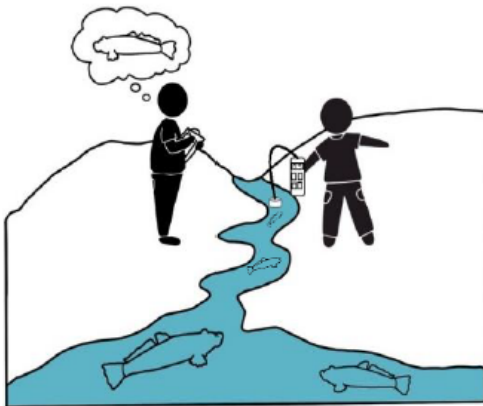
Get the word out
Education/Outreach



Keep People Informed
Signage

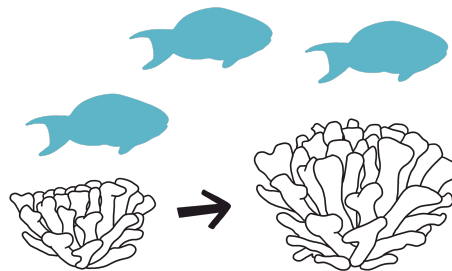


Repair and Prevent
Damage
Enhance Habitat



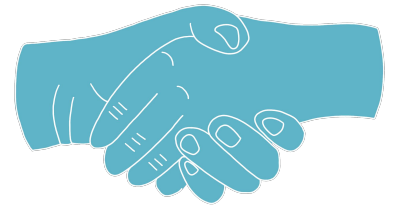
Track Changes of
Recovering Watersheds

**Stream and Estuary
Monitoring**



Track Progress and
Changes

**Enhanced
Monitoring**



Work Together Towards
Solutions

**Community and
Agency Partnerships**

Examples include:

- Restoring stream flow
- Addressing overuse/ over-tourism
- Increasing enforcement
- Reducing sedimentation
- Addressing run-off and land-based sources of pollution