

YUKLIN ALULI 1428  
415-C Uluniu Street  
Kailua, Hawai'i 96734  
Tel. (808) 262-5900  
email: [yuklin@kailualaw.com](mailto:yuklin@kailualaw.com)

Dexter K. Kaiama 4249  
111 Hekili Street, #A1607  
Kailua, Hawai'i 96734  
Tel. (808) 284-5675  
email: [cdexk@hotmail.com](mailto:cdexk@hotmail.com)

Co-Counsel for Petitioner  
KAHEA: The Hawaiian Environmental Alliance,  
a domestic non-profit Corporation

BOARD OF LAND AND NATURAL RESOURCES

STATE OF HAWAII

In the Matter of:	)	Case No. BLNR-CC-16-002
	)	
A Contested Case Hearing Re	)	KAHEA: THE ENVIRONMENTAL
Conservation District Use Permit	)	ALLIANCE TENTH SUPPLEMENTAL
(COUP) HA-3568 for the Thirty Meter	)	EXHIBIT DESIGNATION; EXHIBIT
Telescope at the Mauna Kea Science	)	B.58 [TMT International Observatory
Reserve, Kaohe Mauka, Hamakua	)	LLC - GuideStar Profile - 2015], B.59
District, Island of Hawai'i, TMK (3) 4-4-	)	[Form 990 - TMT International
015:009	)	Observatory LLC - tax year ending
	)	December 31, 2014];CERTIFICATE
	)	OF SERVICE
	)	
	)	
	)	Hearing Officer: Riki J. Amano.
	)	

**KAHEA: THE HAWAIIAN-ENVIRONMENTAL ALLIANCE TENTH  
SUPPLEMENTAL EXHIBIT DESIGNATION; EXHIBIT B.58 [TMT  
International Observatory LLC - GuideStar Profile - 2015], B.59 [Form 990  
TMT International Observatory LLC - tax year ending December 31, 2014]**

COMES NOW KAHEA: THE ENVIRONMENTAL ALLIANCE, by and through its  
above-named counsel, and hereby submits its Tenth Supplemental Exhibit (Exhibits  
B.58 - B.59) Designation.

Exhibit No.	Description	Rec'd Into Evidence
B.58	TMT International Observatory LLC - GuideStar Profile -2015	
B.59	Form 990 TMT International Observatory LLC - tax years ending December 31, 2014	

DATED: Kailua, Hawaii, 1/18/17



\_\_\_\_\_  
 Yuklin Auli  
 Dexter K. Kaiama  
 Co-counsel for Petitioner KAHEA  
 The Hawaiian Environmental Alliance,  
 a domestic non-profit Corporation

Need more data on this nonprofit? Try a GuideStar Premium Report.

PDF Preview (/ViewPdf.aspx?PdfSource=0&ein=30-0833462)

Buy it now

SCIENCE AND TECHNOLOGY RESEARCH INSTITUTES, SERVICES

# TMT INTERNATIONAL OBSERVATORY LLC

PASADENA, CA

Download Report (/Profile/ViewPdf?ein=30-0833462)

Summary

Programs + Results

Financials

Operations

TMT INTERNATIONAL OBSERVATORY LLC

Summary

Programs + Results

Financials

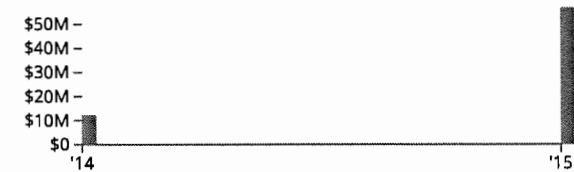
Operations

BACK TO TOP

## REVENUE

The comparison of revenue over multiple years illustrates the financial state of an organization over time.

Source: BMF Data: IRS Business Master File



Year	2015
Revenue	\$56,749,079

## RULING YEAR

# 2015

Tax Forms (Forms 990)

Forms 990

EIN

30-0833462

BRIDGE (https://bridge-registry.org/) Number

# EXHIBIT B.58

1856986695

Contact

➤ See more addresses

Cause Area (NTEE Code) ⓘ

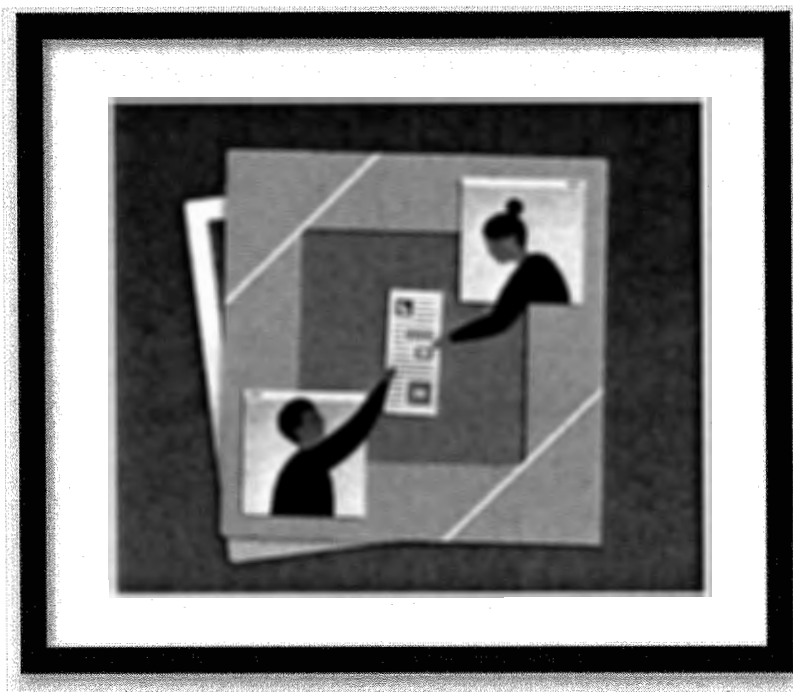
Astronomy (Includes Observatories) (U31)

IRS Filing Requirement

This organization is required to file an IRS Form 990 or 990-EZ.

# Programs + Results

How does this organization make a difference?



**YOU CAN MAKE AN IMPACT**

## Better data starts here.

Uh-oh! Looks like this nonprofit hasn't claimed their profile yet.

GuideStar believes that in-depth and comparable data about organizations can create real change within the nonprofit sector.

We encourage all nonprofit organizations to get involved.

**Is this your nonprofit?**

**Claim your profile now for free (</rxg/update-nonprofit-report/index.aspx>)**

### EXTERNAL REVIEWS

Source: [greatnonprofits.org](http://greatnonprofits.org)

The review section is powered by Great Nonprofits

TMT INTERNATIONAL OBSERVATORY LLC does not have review writing capability at this time.

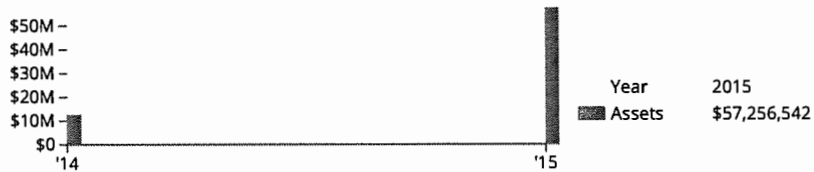
# Financials

Financial information is an important part of gauging the short- and long-term health of the organization.

## Assets

The comparison of assets over multiple years illustrates the financial state of an organization over time.

BMF Data: IRS Business Master File



NEED MORE INFO ON THIS NONPROFIT?

A GuideStar Premium Report is available for this organization.

This GuideStar Premium Report includes:

Forms 990 for 2014

[PDF Preview \(ViewPdf.aspx?PdfSource=0&ein=30-0833462\)](#)

[Buy GuideStar Premium Report now](#)

*Need the ability to download nonprofit data and more advanced search options?  
Consider a Premium or Pro Search subscription (<http://www.guidestar.org/ProductPremiumCatalog.aspx>)*

# Operations

The people, governance practices, and partners that make the organization tick.

TMT INTERNATIONAL OBSERVATORY LLC


## Leadership

NEED MORE INFO ON THIS NONPROFIT?

A GuideStar Premium Report is available for this organization.

**This GuideStar Premium Report includes:**

Forms 990 for 2014

 [PDF Preview \(/ViewPdf.aspx?PdfSource=0&ein=30-0833462\)](#)**Buy it now**

*Need the ability to download nonprofit data and more advanced search options?  
Consider a Premium or Pro Search subscription (<http://www.guidestar.org/ProductPremiumCatalog.aspx>)*

**Governance****BOARD LEADERSHIP PRACTICES**

GuideStar worked with BoardSource, the national leader in nonprofit board leadership and governance, to create this section, which enables organizations and donors to transparently share information about essential board leadership practices. Self-reported by organization

**RESPONSE NOT PROVIDED****BOARD ORIENTATION & EDUCATION**

Does the board conduct a formal orientation for new board members and require all board members to sign a written agreement regarding their roles, responsibilities, and expectations?

**RESPONSE NOT PROVIDED****CEO OVERSIGHT**

Has the board conducted a formal, written assessment of the chief executive within the past year?

**RESPONSE NOT PROVIDED****ETHICS & TRANSPARENCY**

Have the board and senior staff reviewed the conflict-of-interest policy and completed and signed disclosure statements in the past year?

**RESPONSE NOT PROVIDED****BOARD COMPOSITION**

Does the board ensure an inclusive board member recruitment process that results in diversity of thought and leadership?

**RESPONSE NOT PROVIDED****BOARD PERFORMANCE**

Has the board conducted a formal, written self-assessment of its performance within the past three years?



## Better data starts here.

**Uh-oh! Looks like this nonprofit hasn't claimed their profile yet.**

GuideStar believes that in-depth and comparable data about organizations can create real change within the nonprofit sector.

We encourage all nonprofit organizations to get involved.

**Is this your nonprofit?**

**Claim your profile now for free (</rxg/update-nonprofit-report/index.aspx>)**

GuideStar is a 501(c)(3) nonprofit organization. Copyright © 2017, GuideStar USA, Inc. All rights reserved.

Form **990**

# Return of Organization Exempt From Income Tax

OMB No 1545-0047

## 2014

Open to Public Inspection

Department of the Treasury  
Internal Revenue Service

Under section 501(c), 527, or 4947(a)(1) of the Internal Revenue Code (except private foundations)

- ▶ Do not enter social security numbers on this form as it may be made public.
- ▶ Information about Form 990 and its instructions is at [www.irs.gov/form990](http://www.irs.gov/form990).

**A** For the 2014 calendar year, or tax year beginning 05/06, 2014, and ending 12/31, 2014

**B** Check if applicable:

<input type="checkbox"/>	Address change	<b>C</b> Name of organization <u>TMT INTERNATIONAL OBSERVATORY LLC</u>	<b>D</b> Employer identification number <u>30-0833462</u>
<input type="checkbox"/>	Name change		
<input checked="" type="checkbox"/>	Initial return	<b>E</b> Doing business as	<b>E</b> Telephone number <u>(626) 395-1608</u>
<input type="checkbox"/>	Final return/terminated	<b>F</b> Number and street (or P O box if mail is not delivered to street address) Room/suite <u>1111 S. ARROYO PARKWAY, SUITE 200</u>	<b>G</b> Gross receipts \$ <u>12,198,719.</u>
<input type="checkbox"/>	Amended return	City or town, state or province, country, and ZIP or foreign postal code <u>PASADENA, CA 91105</u>	<b>H(a)</b> Is this a group return for subsidiaries? <input type="checkbox"/> Yes <input checked="" type="checkbox"/> No
<input type="checkbox"/>	Application pending	<b>F</b> Name and address of principal officer <u>EDWARD STONE</u> <u>1111 S. ARROYO PARKWAY, 200 PASADENA, CA 91105</u>	<b>H(b)</b> Are all subsidiaries included? <input type="checkbox"/> Yes <input type="checkbox"/> No

**I** Tax-exempt status:  501(c)(3)  501(c) ( ) ◀ (insert no)  4947(a)(1) or  527

**J** Website ▶ WWW.TMT.ORG **H(c)** Group exemption number ▶

**K** Form of organization:  Corporation  Trust  Association  Other ▶ **L** Year of formation 2014 **M** State of legal domicile DE

### Part I Summary

<b>1</b> Briefly describe the organization's mission or most significant activities <u>SEE SCHEDULE O</u>			
<b>2</b> Check this box <input type="checkbox"/> if the organization discontinued its operations or disposed of more than 25% of its net assets			
<b>Activities &amp; Governance</b>	<b>3</b> Number of voting members of the governing body (Part VI, line 1a)	<b>3</b>	<b>4</b>
	<b>4</b> Number of independent voting members of the governing body (Part VI, line 1b)	<b>4</b>	<b>4</b>
	<b>5</b> Total number of individuals employed in calendar year 2014 (Part V, line 2a)	<b>5</b>	<b>0</b>
	<b>6</b> Total number of volunteers (estimate if necessary)	<b>6</b>	<b>0</b>
	<b>7a</b> Total unrelated business revenue from Part VIII, column (C), line 12	<b>7a</b>	<b>0</b>
	<b>b</b> Net unrelated business taxable income from Form 990-T, line 34	<b>7b</b>	<b>0</b>
	<b>Revenue</b>	<b>8</b> Contributions and grants (Part VIII, line 1h)	<b>Prior Year</b>
<b>9</b> Program service revenue (Part VIII, line 2g)		<b>0</b>	<b>12,198,719.</b>
<b>10</b> Investment income (Part VIII, column (A), lines 3, 4, and 7d)		<b>0</b>	<b>0</b>
<b>11</b> Other revenue (Part VIII, column (A), lines 5, 6d, 8c, 9c, 10c, and 11e)		<b>0</b>	<b>0</b>
<b>12</b> Total revenue - add lines 8 through 11 (must equal Part VIII, column (A), line 12)		<b>0</b>	<b>12,198,719.</b>
<b>13</b> Grants and similar amounts paid (Part IX, column (A), lines 1-3)		<b>0</b>	<b>500,000.</b>
<b>14</b> Benefits paid to or for members (Part IX, column (A), line 4)		<b>0</b>	<b>0</b>
<b>Expenses</b>	<b>15</b> Salaries, other compensation, employee benefits (Part IX, column (A), lines 5-10)	<b>0</b>	<b>0</b>
	<b>16a</b> Professional fundraising fees (Part IX, column (A), line 11)	<b>0</b>	<b>0</b>
	<b>b</b> Total fundraising expenses (Part IX, column (D), line 25)	<b>0</b>	<b>0</b>
	<b>17</b> Other expenses (Part IX, column (A), lines 11a-11d, 11f-11h)	<b>0</b>	<b>15,196,345.</b>
	<b>18</b> Total expenses Add lines 13-17 (must equal Part IX, column (A), line 25)	<b>0</b>	<b>15,696,345.</b>
<b>19</b> Revenue less expenses Subtract line 18 from line 12	<b>0</b>	<b>-3,497,626.</b>	
<b>Net Assets or Fund Balances</b>	<b>20</b> Total assets (Part X, line 16)	<b>Beginning of Current Year</b>	<b>End of Year</b>
	<b>21</b> Total liabilities (Part X, line 26)	<b>0</b>	<b>12,584,253.</b>
	<b>22</b> Net assets or fund balances Subtract line 21 from line 20	<b>0</b>	<b>16,081,879.</b>

### Part II Signature Block

Under penalties of perjury, I declare that I have examined this return, including accompanying schedules and statements, and to the best of my knowledge and belief, it is true, correct, and complete. Declaration of preparer (other than officer) is based on all information of which preparer has any knowledge.

**Sign Here**

Signature of officer: E.C. Stone Date: 11/6/15

Type or print name and title: E.C. STONE, EXECUTIVE DIRECTOR

**Paid Preparer Use Only**

Print/Type preparer's name: ERIN COUTURE Preparer's signature: Erin Couture Date: 11/02/2015 Check  if self-employed PTIN: P01390592

Firm's name ▶ PRICEWATERHOUSECOOPERS LLP Firm's EIN ▶ 13-4008324

Firm's address ▶ 125 HIGH STREET BOSTON, MA 02110 Phone no 617-530-5000

May the IRS discuss this return with the preparer shown above? (see instructions)  Yes  No

For Paperwork Reduction Act Notice, see the separate instructions.

Form **990** (2014)

JSA  
4E1010 1 000  
3792IX 7377

# EXHIBIT

B.S. 36

10

**Part III** Statement of Program Service Accomplishments

Check if Schedule O contains a response or note to any line in this Part III  Yes  No

**1** Briefly describe the organization's mission  
SEE SCHEDULE O

**2** Did the organization undertake any significant program services during the year which were not listed on the prior Form 990 or 990-EZ?  Yes  No  
If "Yes," describe these new services on Schedule O

**3** Did the organization cease conducting, or make significant changes in how it conducts, any program services?  Yes  No  
If "Yes," describe these changes on Schedule O

**4** Describe the organization's program service accomplishments for each of its three largest program services, as measured by expenses Section 501(c)(3) and 501(c)(4) organizations are required to report the amount of grants and allocations to others, the total expenses, and revenue, if any, for each program service reported

**4a** (Code \_\_\_\_\_) (Expenses \$ 15,503,003 including grants of \$ \_\_\_\_\_) (Revenue \$ \_\_\_\_\_)  
SEE SCHEDULE O

**4b** (Code \_\_\_\_\_) (Expenses \$ \_\_\_\_\_ including grants of \$ \_\_\_\_\_) (Revenue \$ \_\_\_\_\_)

**4c** (Code \_\_\_\_\_) (Expenses \$ \_\_\_\_\_ including grants of \$ \_\_\_\_\_) (Revenue \$ \_\_\_\_\_)

**4d** Other program services (Describe in Schedule O)  
(Expenses \$ \_\_\_\_\_ including grants of \$ \_\_\_\_\_) (Revenue \$ \_\_\_\_\_)

**4e** Total program service expenses **▶** 15,503,003.

**Part IV Checklist of Required Schedules**

	Yes	No
1 Is the organization described in section 501(c)(3) or 4947(a)(1) (other than a private foundation)? If "Yes," complete Schedule A. . . . .	X	
2 Is the organization required to complete Schedule B, Schedule of Contributors (see instructions)? . . . . .	X	
3 Did the organization engage in direct or indirect political campaign activities on behalf of or in opposition to candidates for public office? If "Yes," complete Schedule C, Part I . . . . .		X
4 Section 501(c)(3) organizations. Did the organization engage in lobbying activities, or have a section 501(h) election in effect during the tax year? If "Yes," complete Schedule C, Part II . . . . .		X
5 Is the organization a section 501(c)(4), 501(c)(5), or 501(c)(6) organization that receives membership dues, assessments, or similar amounts as defined in Revenue Procedure 98-19? If "Yes," complete Schedule C, Part III . . . . .		X
6 Did the organization maintain any donor advised funds or any similar funds or accounts for which donors have the right to provide advice on the distribution or investment of amounts in such funds or accounts? If "Yes," complete Schedule D, Part I. . . . .		X
7 Did the organization receive or hold a conservation easement, including easements to preserve open space, the environment, historic land areas, or historic structures? If "Yes," complete Schedule D, Part II . . . . .		X
8 Did the organization maintain collections of works of art, historical treasures, or other similar assets? If "Yes," complete Schedule D, Part III . . . . .		X
9 Did the organization report an amount in Part X, line 21, for escrow or custodial account liability, serve as a custodian for amounts not listed in Part X, or provide credit counseling, debt management, credit repair, or debt negotiation services? If "Yes," complete Schedule D, Part IV . . . . .		X
10 Did the organization, directly or through a related organization, hold assets in temporarily restricted endowments, permanent endowments, or quasi-endowments? If "Yes," complete Schedule D, Part V. . . . .		X
11 If the organization's answer to any of the following questions is "Yes," then complete Schedule D, Parts VI, VII, VIII, IX, or X as applicable		
a Did the organization report an amount for land, buildings, and equipment in Part X, line 10? If "Yes," complete Schedule D, Part VI . . . . .		X
b Did the organization report an amount for investments-other securities in Part X, line 12 that is 5% or more of its total assets reported in Part X, line 16? If "Yes," complete Schedule D, Part VII . . . . .		X
c Did the organization report an amount for investments-program related in Part X, line 13 that is 5% or more of its total assets reported in Part X, line 16? If "Yes," complete Schedule D, Part VIII. . . . .		X
d Did the organization report an amount for other assets in Part X, line 15 that is 5% or more of its total assets reported in Part X, line 16? If "Yes," complete Schedule D, Part IX. . . . .	X	
e Did the organization report an amount for other liabilities in Part X, line 25? If "Yes," complete Schedule D, Part X . . . . .	X	
f Did the organization's separate or consolidated financial statements for the tax year include a footnote that addresses the organization's liability for uncertain tax positions under FIN 48 (ASC 740)? If "Yes," complete Schedule D, Part X . . . . .	X	
12a Did the organization obtain separate, independent audited financial statements for the tax year? If "Yes," complete Schedule D, Parts XI and XII. . . . .	X	
b Was the organization included in consolidated, independent audited financial statements for the tax year? If "Yes," and if the organization answered "No" to line 12a, then completing Schedule D, Parts XI and XII is optional . . . . .		X
13 Is the organization a school described in section 170(b)(1)(A)(ii)? If "Yes," complete Schedule E. . . . .	X	
14a Did the organization maintain an office, employees, or agents outside of the United States? . . . . .	X	
b Did the organization have aggregate revenues or expenses of more than \$10,000 from grantmaking, fundraising, business, investment, and program service activities outside the United States, or aggregate foreign investments valued at \$100,000 or more? If "Yes," complete Schedule F, Parts I and IV . . . . .		X
15 Did the organization report on Part IX, column (A), line 3, more than \$5,000 of grants or other assistance to or for any foreign organization? If "Yes," complete Schedule F, Parts II and IV . . . . .		X
16 Did the organization report on Part IX, column (A), line 3, more than \$5,000 of aggregate grants or other assistance to or for foreign individuals? If "Yes," complete Schedule F, Parts III and IV . . . . .		X
17 Did the organization report a total of more than \$15,000 of expenses for professional fundraising services on Part IX, column (A), lines 6 and 11e? If "Yes," complete Schedule G, Part I (see instructions). . . . .		X
18 Did the organization report more than \$15,000 total of fundraising event gross income and contributions on Part VIII, lines 1c and 8a? If "Yes," complete Schedule G, Part II . . . . .		X
19 Did the organization report more than \$15,000 of gross income from gaming activities on Part VIII, line 9a? If "Yes," complete Schedule G, Part III . . . . .		X
20a Did the organization operate one or more hospital facilities? If "Yes," complete Schedule H . . . . .		X
b If "Yes" to line 20a, did the organization attach a copy of its audited financial statements to this return? . . . . .		

**Part IV Checklist of Required Schedules (continued)**

		Yes	No
21	Did the organization report more than \$5,000 of grants or other assistance to any domestic organization or domestic government on Part IX, column (A), line 1? If "Yes," complete Schedule I, Parts I and II . . . . .	X	
22	Did the organization report more than \$5,000 of grants or other assistance to or for domestic individuals on Part IX, column (A), line 2? If "Yes," complete Schedule I, Parts I and III . . . . .		X
23	Did the organization answer "Yes" to Part VII, Section A, line 3, 4, or 5 about compensation of the organization's current and former officers, directors, trustees, key employees, and highest compensated employees? If "Yes," complete Schedule J . . . . .	X	
24a	Did the organization have a tax-exempt bond issue with an outstanding principal amount of more than \$100,000 as of the last day of the year, that was issued after December 31, 2002? If "Yes," answer lines 24b through 24d and complete Schedule K. If "No," go to line 25a . . . . .		X
b	Did the organization invest any proceeds of tax-exempt bonds beyond a temporary period exception? . . . . .		
c	Did the organization maintain an escrow account other than a refunding escrow at any time during the year to defease any tax-exempt bonds? . . . . .		
d	Did the organization act as an "on behalf of" issuer for bonds outstanding at any time during the year? . . . . .		
25a	<b>Section 501(c)(3), 501(c)(4), and 501(c)(29) organizations.</b> Did the organization engage in an excess benefit transaction with a disqualified person during the year? If "Yes," complete Schedule L, Part I . . . . .		X
b	Is the organization aware that it engaged in an excess benefit transaction with a disqualified person in a prior year, and that the transaction has not been reported on any of the organization's prior Forms 990 or 990-EZ? If "Yes," complete Schedule L, Part I . . . . .		X
26	Did the organization report any amount on Part X, line 5, 6, or 22 for receivables from or payables to any current or former officers, directors, trustees, key employees, highest compensated employees, or disqualified persons? If "Yes," complete Schedule L, Part II . . . . .		X
27	Did the organization provide a grant or other assistance to an officer, director, trustee, key employee, substantial contributor or employee thereof, a grant selection committee member, or to a 35% controlled entity or family member of any of these persons? If "Yes," complete Schedule L, Part III . . . . .		X
28	Was the organization a party to a business transaction with one of the following parties (see Schedule L, Part IV instructions for applicable filing thresholds, conditions, and exceptions)		
a	A current or former officer, director, trustee, or key employee? If "Yes," complete Schedule L, Part IV . . . . .		X
b	A family member of a current or former officer, director, trustee, or key employee? If "Yes," complete Schedule L, Part IV . . . . .		X
c	An entity of which a current or former officer, director, trustee, or key employee (or a family member thereof) was an officer, director, trustee, or direct or indirect owner? If "Yes," complete Schedule L, Part IV . . . . .		X
29	Did the organization receive more than \$25,000 in non-cash contributions? If "Yes," complete Schedule M . . . . .		X
30	Did the organization receive contributions of art, historical treasures, or other similar assets, or qualified conservation contributions? If "Yes," complete Schedule M . . . . .		X
31	Did the organization liquidate, terminate, or dissolve and cease operations? If "Yes," complete Schedule N, Part I . . . . .		X
32	Did the organization sell, exchange, dispose of, or transfer more than 25% of its net assets? If "Yes," complete Schedule N, Part II . . . . .		X
33	Did the organization own 100% of an entity disregarded as separate from the organization under Regulations sections 301.7701-2 and 301.7701-3? If "Yes," complete Schedule R, Part I . . . . .		X
34	Was the organization related to any tax-exempt or taxable entity? If "Yes," complete Schedule R, Part II, III, or IV, and Part V, line 1 . . . . .		X
35a	Did the organization have a controlled entity within the meaning of section 512(b)(13)? . . . . .		X
b	If "Yes" to line 35a, did the organization receive any payment from or engage in any transaction with a controlled entity within the meaning of section 512(b)(13)? If "Yes," complete Schedule R, Part V, line 2 . . . . .		
36	<b>Section 501(c)(3) organizations.</b> Did the organization make any transfers to an exempt non-charitable related organization? If "Yes," complete Schedule R, Part V, line 2 . . . . .		X
37	Did the organization conduct more than 5% of its activities through an entity that is not a related organization and that is treated as a partnership for federal income tax purposes? If "Yes," complete Schedule R, Part VI . . . . .		X
38	Did the organization complete Schedule O and provide explanations in Schedule O for Part VI, lines 11b and 19? <b>Note.</b> All Form 990 filers are required to complete Schedule O . . . . .	X	

Part V Statements Regarding Other IRS Filings and Tax Compliance

Check if Schedule O contains a response or note to any line in this Part V

Table with columns for question numbers (1a-14b), Yes, and No. Contains various tax compliance questions and their corresponding responses.

Part VI Governance, Management, and Disclosure For each "Yes" response to lines 2 through 7b below, and for a "No" response to line 8a, 8b, or 10b below, describe the circumstances, processes, or changes in Schedule O See instructions Check if Schedule O contains a response or note to any line in this Part VI [X]

Section A. Governing Body and Management

Table with 3 columns: Question, Yes, No. Rows include: 1a Enter the number of voting members... 1b Enter the number of voting members included... 2 Did any officer, director, trustee, or key employee have a family relationship... 3 Did the organization delegate control over management duties... 4 Did the organization make any significant changes to its governing documents... 5 Did the organization become aware during the year of a significant diversion of the organization's assets... 6 Did the organization have members or stockholders... 7a Did the organization have members, stockholders, or other persons who had the power to elect or appoint one or more members of the governing body... 7b Are any governance decisions of the organization reserved to (or subject to approval by) members, stockholders, or persons other than the governing body... 8 Did the organization contemporaneously document the meetings held or written actions undertaken during the year by the following: a The governing body? b Each committee with authority to act on behalf of the governing body? 9 Is there any officer, director, trustee, or key employee listed in Part VII, Section A, who cannot be reached at the organization's mailing address? If "Yes," provide the names and addresses in Schedule O.

Section B. Policies (This Section B requests information about policies not required by the Internal Revenue Code)

Table with 3 columns: Question, Yes, No. Rows include: 10a Did the organization have local chapters, branches, or affiliates? b If "Yes," did the organization have written policies and procedures governing the activities of such chapters, affiliates, and branches to ensure their operations are consistent with the organization's exempt purposes? 11a Has the organization provided a complete copy of this Form 990 to all members of its governing body before filing the form? b Describe in Schedule O the process, if any, used by the organization to review this Form 990 12a Did the organization have a written conflict of interest policy? If "No," go to line 13 b Were officers, directors, or trustees, and key employees required to disclose annually interests that could give rise to conflicts? c Did the organization regularly and consistently monitor and enforce compliance with the policy? If "Yes," describe in Schedule O how this was done 13 Did the organization have a written whistleblower policy? 14 Did the organization have a written document retention and destruction policy? 15 Did the process for determining compensation of the following persons include a review and approval by independent persons, comparability data, and contemporaneous substantiation of the deliberation and decision? a The organization's CEO, Executive Director, or top management official b Other officers or key employees of the organization If "Yes" to line 15a or 15b, describe the process in Schedule O (see instructions) 16a Did the organization invest in, contribute assets to, or participate in a joint venture or similar arrangement with a taxable entity during the year? b If "Yes," did the organization follow a written policy or procedure requiring the organization to evaluate its participation in joint venture arrangements under applicable federal tax law, and take steps to safeguard the organization's exempt status with respect to such arrangements?

Section C. Disclosure

- 17 List the states with which a copy of this Form 990 is required to be filed CA,
18 Section 6104 requires an organization to make its Forms 1023 (or 1024 if applicable), 990, and 990-T (Section 501(c)(3)s only) available for public inspection. Indicate how you made these available. Check all that apply. [ ] Own website [ ] Another's website [X] Upon request [X] Other (explain in Schedule O)
19 Describe in Schedule O whether (and if so, how) the organization made its governing documents, conflict of interest policy, and financial statements available to the public during the tax year
20 State the name, address, and telephone number of the person who possesses the organization's books and records PHILIP LINDQUIST 1111 SOUTH ARROYO PARKWAY SUITE 200 PASADENA, CA 91105 626-395-1608

PHILIP LINDQUIST 1111 SOUTH ARROYO PARKWAY SUITE 200 PASADENA, CA 91105 626-395-1608

**Part VII Compensation of Officers, Directors, Trustees, Key Employees, Highest Compensated Employees, and Independent Contractors**

Check if Schedule O contains a response or note to any line in this Part VII.  X

**Section A. Officers, Directors, Trustees, Key Employees, and Highest Compensated Employees**

1a Complete this table for all persons required to be listed Report compensation for the calendar year ending with or within the organization's tax year

- List all of the organization's current officers, directors, trustees (whether individuals or organizations), regardless of amount of compensation Enter -0- in columns (D), (E), and (F) if no compensation was paid
- List all of the organization's current key employees, if any See instructions for definition of "key employee "
- List the organization's five current highest compensated employees (other than an officer, director, trustee, or key employee) who received reportable compensation (Box 5 of Form W-2 and/or Box 7 of Form 1099-MISC) of more than \$100,000 from the organization and any related organizations
- List all of the organization's former officers, key employees, and highest compensated employees who received more than \$100,000 of reportable compensation from the organization and any related organizations
- List all of the organization's former directors or trustees that received, in the capacity as a former director or trustee of the organization, more than \$10,000 of reportable compensation from the organization and any related organizations

List persons in the following order individual trustees or directors, institutional trustees, officers, key employees, highest compensated employees, and former such persons

Check this box if neither the organization nor any related organization compensated any current officer, director, or trustee

(A) Name and Title	(B) Average hours per week (list any hours for related organizations below dotted line)	(C) Position (do not check more than one box, unless person is both an officer and a director/trustee)						(D) Reportable compensation from the organization (W-2/1099-MISC)	(E) Reportable compensation from related organizations (W-2/1099-MISC)	(F) Estimated amount of other compensation from the organization and related organizations
		Individual trustee or director	Institutional trustee	Officer	Key employee	Highest compensated employee	Former			
(1) NATHAN BROSTROM TREASURER/GOVERNOR	4.00	X		X				0	0	0
(2) DEAN CURRIE GOVERNOR	4.00	X						0	0	0
(3) SHRINIVAS KULKARNI GOVERNOR	4.00	X						0	0	0
(4) B. THOMAS SOIFER GOVERNOR	4.00	X						0	0	0
(5) MICHAEL BOLTE GOVERNOR	4.00	X						0	0	0
(6) HENRY YANG CHAIR	4.00	X		X				0	0	0
(7) GANG ZHAO GOVERNOR	4.00	X						0	0	0
(8) SHUDE MAO GOVERNOR	4.00	X						0	0	0
(9) SUIJIAN XUE GOVERNOR	4.00	X						0	0	0
(10) TORU YAMADA GOVERNOR	4.00	X						0	0	0
(11) TOMONORI USUDA GOVERNOR	4.00	X						0	0	0
(12) MASANORI IYE GOVERNOR	4.00	X						0	0	0
(13) EDWARD STONE EXECUTIVE DIRECTOR	20.00			X				0	0	0
(14) DIANA JERGOVIC SECRETARY	4.00			X				0	0	0

**Part VII Section A. Officers, Directors, Trustees, Key Employees, and Highest Compensated Employees** (continued)

(A) Name and title	(B) Average hours per week (list any hours for related organizations below dotted line)	(C) Position (do not check more than one box, unless person is both an officer and a director/trustee)						(D) Reportable compensation from the organization (W-2/1099-MISC)	(E) Reportable compensation from related organizations (W-2/1099-MISC)	(F) Estimated amount of other compensation from the organization and related organizations
		Individual trustee or director	Institutional trustee	Officer	Key employee	Highest compensated employee	Former			
( 15) GARY SANDERS PROJECT MANAGER	40.00				X			177,588.	0	19,891.
( 16) PHILIP LINDQUIST BUSINESS MANAGER	40.00					X		142,892.	0	17,109.
( 17) RAVINDER BHATIA ASSOCIATE PROJECT MANAGER	40.00					X		143,306.	0	56,421.
( 18) LAWRENCE STEPP TELESCOPE DEPARTMENT HEAD	40.00					X		139,364.	0	58,800.
( 19) SANDRA DAWSON MGR HAWAI'I COMMUNITY AFFAIRS	40.00					X		117,595.	0	54,545.
( 20) VIRGINIA FORD SENIOR OPTO MECH ENGINEER	40.00					X		114,016.	0	47,278.
<b>1b Sub-total</b> . . . . .								0	0	0
<b>c Total from continuation sheets to Part VII, Section A</b> . . . . .								834,761.	0	254,044.
<b>d Total (add lines 1b and 1c)</b> . . . . .								834,761.	0	254,044.

**2** Total number of individuals (including but not limited to those listed above) who received more than \$100,000 of reportable compensation from the organization ▶ 17

- 3 Did the organization list any former officer, director, or trustee, key employee, or highest compensated employee on line 1a? If "Yes," complete Schedule J for such individual . . . . .
- 4 For any individual listed on line 1a, is the sum of reportable compensation and other compensation from the organization and related organizations greater than \$150,000? If "Yes," complete Schedule J for such individual . . . . .
- 5 Did any person listed on line 1a receive or accrue compensation from any unrelated organization or individual for services rendered to the organization? If "Yes," complete Schedule J for such person . . . . .

	Yes	No
3		X
4		X
5	X	

**Section B. Independent Contractors**

**1** Complete this table for your five highest compensated independent contractors that received more than \$100,000 of compensation from the organization Report compensation for the calendar year ending with or within the organization's tax year

(A) Name and business address	(B) Description of services	(C) Compensation
ATTACHMENT 1		

**2** Total number of independent contractors (including but not limited to those listed above) who received more than \$100,000 in compensation from the organization ▶ 5

Part VIII Statement of Revenue

Check if Schedule O contains a response or note to any line in this Part VIII.

Table with columns: (A) Total revenue, (B) Related or exempt function revenue, (C) Unrelated business revenue, (D) Revenue excluded from tax under sections 512-514. Rows include Contributions, Gifts, Grants and Other Similar Amounts (1a-1f), Program Service Revenue (2a-2f), and Other Revenue (3-12).

**Part IX Statement of Functional Expenses**

Section 501(c)(3) and 501(c)(4) organizations must complete all columns All other organizations must complete column (A)

Check if Schedule O contains a response or note to any line in this Part IX

Do not include amounts reported on lines 6b, 7b, 8b, 9b, and 10b of Part VIII.	(A) Total expenses	(B) Program service expenses	(C) Management and general expenses	(D) Fundraising expenses
1 Grants and other assistance to domestic organizations and domestic governments See Part IV, line 21 . . . . .	500,000.	500,000.		
2 Grants and other assistance to domestic individuals See Part IV, line 22 . . . . .	0			
3 Grants and other assistance to foreign organizations, foreign governments, and foreign individuals See Part IV, lines 15 and 16 . . . . .	0			
4 Benefits paid to or for members . . . . .	0			
5 Compensation of current officers, directors, trustees, and key employees . . . . .	0			
6 Compensation not included above, to disqualified persons (as defined under section 4958(f)(1)) and persons described in section 4958(c)(3)(B) . . . . .	0			
7 Other salaries and wages . . . . .	0			
8 Pension plan accruals and contributions (include section 401(k) and 403(b) employer contributions)	0			
9 Other employee benefits . . . . .	0			
10 Payroll taxes . . . . .	0			
11 Fees for services (non-employees)	0			
a Management . . . . .				
b Legal . . . . .	819,406.	815,312.	4,094.	
c Accounting . . . . .	86,689.		86,689.	
d Lobbying . . . . .	0			
e Professional fundraising services See Part IV, line 17.	0			
f Investment management fees . . . . .	0			
g Other (if line 11g amount exceeds 10% of line 25, column (A) amount, list line 11g expenses on Schedule O). . . . .	0			
12 Advertising and promotion . . . . .	0			
13 Office expenses . . . . .	26,951.	26,951.		
14 Information technology . . . . .	0			
15 Royalties . . . . .	0			
16 Occupancy . . . . .	0			
17 Travel . . . . .	0			
18 Payments of travel or entertainment expenses for any federal, state, or local public officials	0			
19 Conferences, conventions, and meetings . . . . .	101,105.		101,105.	
20 Interest . . . . .	0			
21 Payments to affiliates . . . . .	0			
22 Depreciation, depletion, and amortization . . . . .	0			
23 Insurance . . . . .	110,005.	110,005.		
24 Other expenses Itemize expenses not covered above (List miscellaneous expenses in line 24e If line 24e amount exceeds 10% of line 25, column (A) amount, list line 24e expenses on Schedule O)				
a SPONSORSHIP & OUTREACH -----	11,855,800.	11,855,800.		
b TIO F&A -----	1,625,670.	1,625,670.		
c LEASE EXPENSES -----	348,881.	348,881.		
d FEES -----	124,261.	122,807.	1,454.	
e All other expenses -----	97,577.	97,577.		
25 Total functional expenses. Add lines 1 through 24e	15,696,345.	15,503,003.	193,342.	
26 Joint costs. Complete this line only if the organization reported in column (B) joint costs from a combined educational campaign and fundraising solicitation Check here <input type="checkbox"/> if following SOP 98-2 (ASC 958-720) . . . . .	0			

**Part X Balance Sheet**

Check if Schedule O contains a response or note to any line in this Part X

		(A) Beginning of year	(B) End of year
<b>Assets</b>	1 Cash - non-interest-bearing	0 1	5,169,392.
	2 Savings and temporary cash investments	0 2	0
	3 Pledges and grants receivable, net	0 3	0
	4 Accounts receivable, net	0 4	0
	5 Loans and other receivables from current and former officers, directors, trustees, key employees, and highest compensated employees Complete Part II of Schedule L	0 5	0
	6 Loans and other receivables from other disqualified persons (as defined under section 4958(f)(1)), persons described in section 4958(c)(3)(B), and contributing employers and sponsoring organizations of section 501(c)(9) voluntary employees' beneficiary organizations (see instructions) Complete Part II of Schedule L	0 6	0
	7 Notes and loans receivable, net	0 7	0
	8 Inventories for sale or use	0 8	0
	9 Prepaid expenses and deferred charges	0 9	0
	10 a Land, buildings, and equipment cost or other basis Complete Part VI of Schedule D	10a	
	b Less accumulated depreciation	10b	
	11 Investments - publicly traded securities	0 11	0
	12 Investments - other securities See Part IV, line 11	0 12	0
	13 Investments - program-related See Part IV, line 11	0 13	0
	14 Intangible assets	0 14	0
	15 Other assets See Part IV, line 11	0 15	7,414,861.
16 <b>Total assets.</b> Add lines 1 through 15 (must equal line 34)	0 16	12,584,253.	
<b>Liabilities</b>	17 Accounts payable and accrued expenses	0 17	3,596,010.
	18 Grants payable	0 18	0
	19 Deferred revenue	0 19	0
	20 Tax-exempt bond liabilities	0 20	0
	21 Escrow or custodial account liability Complete Part IV of Schedule D	0 21	0
	22 Loans and other payables to current and former officers, directors, trustees, key employees, highest compensated employees, and disqualified persons Complete Part II of Schedule L	0 22	0
	23 Secured mortgages and notes payable to unrelated third parties	0 23	0
	24 Unsecured notes and loans payable to unrelated third parties	0 24	0
	25 Other liabilities (including federal income tax, payables to related third parties, and other liabilities not included on lines 17-24) Complete Part X of Schedule D	0 25	12,485,869.
	26 <b>Total liabilities.</b> Add lines 17 through 25	0 26	16,081,879.
<b>Net Assets or Fund Balances</b>	Organizations that follow SFAS 117 (ASC 958), check here <input type="checkbox"/> and complete lines 27 through 29, and lines 33 and 34.		
	27 Unrestricted net assets	27	
	28 Temporarily restricted net assets	28	
	29 Permanently restricted net assets	29	
	Organizations that do not follow SFAS 117 (ASC 958), check here <input checked="" type="checkbox"/> and complete lines 30 through 34.		
	30 Capital stock or trust principal, or current funds	0 30	0
	31 Paid-in or capital surplus, or land, building, or equipment fund	0 31	0
	32 Retained earnings, endowment, accumulated income, or other funds	0 32	-3,497,626.
33 <b>Total net assets or fund balances</b>	0 33	-3,497,626.	
34 <b>Total liabilities and net assets/fund balances.</b>	0 34	12,584,253.	

**Part XI Reconciliation of Net Assets**

Check if Schedule O contains a response or note to any line in this Part XI

1	Total revenue (must equal Part VIII, column (A), line 12)	1	12,198,719.
2	Total expenses (must equal Part IX, column (A), line 25)	2	15,696,345.
3	Revenue less expenses Subtract line 2 from line 1	3	-3,497,626.
4	Net assets or fund balances at beginning of year (must equal Part X, line 33, column (A))	4	0
5	Net unrealized gains (losses) on investments	5	0
6	Donated services and use of facilities	6	0
7	Investment expenses	7	0
8	Prior period adjustments	8	0
9	Other changes in net assets or fund balances (explain in Schedule O)	9	0
10	Net assets or fund balances at end of year Combine lines 3 through 9 (must equal Part X, line 33, column (B))	10	-3,497,626.

**Part XII Financial Statements and Reporting**

Check if Schedule O contains a response or note to any line in this Part XII

		Yes	No
1	Accounting method used to prepare the Form 990 <input type="checkbox"/> Cash <input checked="" type="checkbox"/> Accrual <input type="checkbox"/> Other _____ If the organization changed its method of accounting from a prior year or checked "Other," explain in Schedule O		
2a	Were the organization's financial statements compiled or reviewed by an independent accountant? . . . . . If "Yes," check a box below to indicate whether the financial statements for the year were compiled or reviewed on a separate basis, consolidated basis, or both <input type="checkbox"/> Separate basis <input type="checkbox"/> Consolidated basis <input type="checkbox"/> Both consolidated and separate basis		X
2b	Were the organization's financial statements audited by an independent accountant? . . . . . If "Yes," check a box below to indicate whether the financial statements for the year were audited on a separate basis, consolidated basis, or both <input checked="" type="checkbox"/> Separate basis <input type="checkbox"/> Consolidated basis <input type="checkbox"/> Both consolidated and separate basis	X	
2c	If "Yes" to line 2a or 2b, does the organization have a committee that assumes responsibility for oversight of the audit, review, or compilation of its financial statements and selection of an independent accountant? If the organization changed either its oversight process or selection process during the tax year, explain in Schedule O	X	
3a	As a result of a federal award, was the organization required to undergo an audit or audits as set forth in the Single Audit Act and OMB Circular A-133? . . . . .		X
3b	If "Yes," did the organization undergo the required audit or audits? If the organization did not undergo the required audit or audits, explain why in Schedule O and describe any steps taken to undergo such audits		

**SCHEDULE A**  
**(Form 990 or 990-EZ)**

**Public Charity Status and Public Support**

Complete if the organization is a section 501(c)(3) organization or a section 4947(a)(1) nonexempt charitable trust.

OMB No 1545-0047

**2014**

Open to Public Inspection

Department of the Treasury  
Internal Revenue Service

▶ Attach to Form 990 or Form 990-EZ.

▶ Information about Schedule A (Form 990 or 990-EZ) and its instructions is at [www.irs.gov/form990](http://www.irs.gov/form990).

Name of the organization

TMT INTERNATIONAL OBSERVATORY LLC

Employer identification number

30-0833462

**Part I Reason for Public Charity Status (All organizations must complete this part.) See instructions.**

The organization is not a private foundation because it is (For lines 1 through 11, check only one box.)

- 1  A church, convention of churches, or association of churches described in section 170(b)(1)(A)(i).
- 2  A school described in section 170(b)(1)(A)(ii). (Attach Schedule E.)
- 3  A hospital or a cooperative hospital service organization described in section 170(b)(1)(A)(iii).
- 4  A medical research organization operated in conjunction with a hospital described in section 170(b)(1)(A)(iii). Enter the hospital's name, city, and state
- 5  An organization operated for the benefit of a college or university owned or operated by a governmental unit described in section 170(b)(1)(A)(iv). (Complete Part II.)
- 6  A federal, state, or local government or governmental unit described in section 170(b)(1)(A)(v).
- 7  An organization that normally receives a substantial part of its support from a governmental unit or from the general public described in section 170(b)(1)(A)(vi). (Complete Part II.)
- 8  A community trust described in section 170(b)(1)(A)(vi). (Complete Part II.)
- 9  An organization that normally receives (1) more than 33 1/3% of its support from contributions, membership fees, and gross receipts from activities related to its exempt functions - subject to certain exceptions, and (2) no more than 33 1/3% of its support from gross investment income and unrelated business taxable income (less section 511 tax) from businesses acquired by the organization after June 30, 1975. See section 509(a)(2). (Complete Part III.)
- 10  An organization organized and operated exclusively to test for public safety. See section 509(a)(4).
- 11  An organization organized and operated exclusively for the benefit of, to perform the functions of, or to carry out the purposes of one or more publicly supported organizations described in section 509(a)(1) or section 509(a)(2). See section 509(a)(3). Check the box in lines 11a through 11d that describes the type of supporting organization and complete lines 11e, 11f, and 11g.
  - a  **Type I** A supporting organization operated, supervised, or controlled by its supported organization(s), typically by giving the supported organization(s) the power to regularly appoint or elect a majority of the directors or trustees of the supporting organization. You must complete Part IV, Sections A and B.
  - b  **Type II** A supporting organization supervised or controlled in connection with its supported organization(s), by having control or management of the supporting organization vested in the same persons that control or manage the supported organization(s). You must complete Part IV, Sections A and C.
  - c  **Type III functionally integrated** A supporting organization operated in connection with, and functionally integrated with, its supported organization(s) (see instructions). You must complete Part IV, Sections A, D, and E.
  - d  **Type III non-functionally integrated** A supporting organization operated in connection with its supported organization(s) that is not functionally integrated. The organization generally must satisfy a distribution requirement and an attentiveness requirement (see instructions). You must complete Part IV, Sections A and D, and Part V.
  - e  Check this box if the organization received a written determination from the IRS that it is a Type I, Type II, Type III functionally integrated, or Type III non-functionally integrated supporting organization.
  - f Enter the number of supported organizations:
  - g Provide the following information about the supported organization(s)

(i) Name of supported organization	(ii) EIN	(iii) Type of organization (described on lines 1-9 above or IRC section (see instructions))	(iv) Is the organization listed in your governing document?		(v) Amount of monetary support (see instructions)	(vi) Amount of other support (see instructions)
			Yes	No		
(A)						
(B)						
(C)						
(D)						
(E)						
<b>Total</b>						

For Paperwork Reduction Act Notice, see the Instructions for Form 990 or 990-EZ.

Schedule A (Form 990 or 990-EZ) 2014

**Part II Support Schedule for Organizations Described in Sections 170(b)(1)(A)(iv) and 170(b)(1)(A)(vi)**  
 (Complete only if you checked the box on line 5, 7, or 8 of Part I or if the organization failed to qualify under Part III. If the organization fails to qualify under the tests listed below, please complete Part III.)

**Section A. Public Support**

Calendar year (or fiscal year beginning in) ▶	(a) 2010	(b) 2011	(c) 2012	(d) 2013	(e) 2014	(f) Total
1 Gifts, grants, contributions, and membership fees received (Do not include any "unusual grants") . . . . .	0	0	0	0	12,198,719	12,198,719
2 Tax revenues levied for the organization's benefit and either paid to or expended on its behalf . . . . .						0
3 The value of services or facilities furnished by a governmental unit to the organization without charge . . . . .						0
4 Total. Add lines 1 through 3 . . . . .					12,198,719	12,198,719
5 The portion of total contributions by each person (other than a governmental unit or publicly supported organization) included on line 1 that exceeds 2% of the amount shown on line 11, column (f) . . . . .						0
6 Public support. Subtract line 5 from line 4 . . . . .						12,198,719

**Section B. Total Support**

Calendar year (or fiscal year beginning in) ▶	(a) 2010	(b) 2011	(c) 2012	(d) 2013	(e) 2014	(f) Total
7 Amounts from line 4 . . . . .					12,198,719	12,198,719
8 Gross income from interest, dividends, payments received on securities loans, rents, royalties and income from similar sources . . . . .						0
9 Net income from unrelated business activities, whether or not the business is regularly carried on . . . . .						0
10 Other income. Do not include gain or loss from the sale of capital assets (Explain in Part VI) . . . . .						0
11 Total support. Add lines 7 through 10 . . . . .						12,198,719
12 Gross receipts from related activities, etc (see instructions) . . . . .					12	
13 First five years. If the Form 990 is for the organization's first, second, third, fourth, or fifth tax year as a section 501(c)(3) organization, check this box and stop here . . . . .						<input checked="" type="checkbox"/>

**Section C. Computation of Public Support Percentage**

14 Public support percentage for 2014 (line 6, column (f) divided by line 11, column (f)) . . . . .	14	%
15 Public support percentage from 2013 Schedule A, Part II, line 14 . . . . .	15	%
16a 33 1/3% support test - 2014. If the organization did not check the box on line 13, and line 14 is 33 1/3% or more, check this box and stop here. The organization qualifies as a publicly supported organization . . . . .		<input type="checkbox"/>
b 33 1/3% support test - 2013. If the organization did not check a box on line 13 or 16a, and line 15 is 33 1/3% or more, check this box and stop here. The organization qualifies as a publicly supported organization . . . . .		<input type="checkbox"/>
17a 10%-facts-and-circumstances test - 2014. If the organization did not check a box on line 13, 16a, or 16b, and line 14 is 10% or more, and if the organization meets the "facts-and-circumstances" test, check this box and stop here. Explain in Part VI how the organization meets the "facts-and-circumstances" test The organization qualifies as a publicly supported organization . . . . .		<input type="checkbox"/>
b 10%-facts-and-circumstances test - 2013. If the organization did not check a box on line 13, 16a, 16b, or 17a, and line 15 is 10% or more, and if the organization meets the "facts-and-circumstances" test, check this box and stop here. Explain in Part VI how the organization meets the "facts-and-circumstances" test The organization qualifies as a publicly supported organization . . . . .		<input type="checkbox"/>
18 Private foundation. If the organization did not check a box on line 13, 16a, 16b, 17a, or 17b, check this box and see instructions . . . . .		<input type="checkbox"/>

**Part III Support Schedule for Organizations Described in Section 509(a)(2)**  
 (Complete only if you checked the box on line 9 of Part I or if the organization failed to qualify under Part II.  
 If the organization fails to qualify under the tests listed below, please complete Part II.)

**Section A. Public Support**

Calendar year (or fiscal year beginning in) ▶	(a) 2010	(b) 2011	(c) 2012	(d) 2013	(e) 2014	(f) Total
1 Gifts, grants, contributions, and membership fees received (Do not include any "unusual grants.")						
2 Gross receipts from admissions, merchandise sold or services performed, or facilities furnished in any activity that is related to the organization's tax-exempt purpose . . . . .						
3 Gross receipts from activities that are not an unrelated trade or business under section 513 . . . . .						
4 Tax revenues levied for the organization's benefit and either paid to or expended on its behalf . . . . .						
5 The value of services or facilities furnished by a governmental unit to the organization without charge . . . . .						
6 Total. Add lines 1 through 5 . . . . .						
7a Amounts included on lines 1, 2, and 3 received from disqualified persons . . . . .						
b Amounts included on lines 2 and 3 received from other than disqualified persons that exceed the greater of \$5,000 or 1% of the amount on line 13 for the year . . . . .						
c Add lines 7a and 7b. . . . .						
8 Public support (Subtract line 7c from line 6) . . . . .						

**Section B. Total Support**

Calendar year (or fiscal year beginning in) ▶	(a) 2010	(b) 2011	(c) 2012	(d) 2013	(e) 2014	(f) Total
9 Amounts from line 6. . . . .						
10a Gross income from interest, dividends, payments received on securities loans, rents, royalties and income from similar sources . . . . .						
b Unrelated business taxable income (less section 511 taxes) from businesses acquired after June 30, 1975 . . . . .						
c Add lines 10a and 10b . . . . .						
11 Net income from unrelated business activities not included in line 10b, whether or not the business is regularly carried on . . . . .						
12 Other income. Do not include gain or loss from the sale of capital assets (Explain in Part VI) . . . . .						
13 Total support. (Add lines 9, 10c, 11, and 12) . . . . .						

14 First five years. If the Form 990 is for the organization's first, second, third, fourth, or fifth tax year as a section 501(c)(3) organization, check this box and stop here. . . . .

**Section C. Computation of Public Support Percentage**

15 Public support percentage for 2014 (line 8, column (f) divided by line 13, column (f)) . . . . .	15	%
16 Public support percentage from 2013 Schedule A, Part III, line 15 . . . . .	16	%

**Section D. Computation of Investment Income Percentage**

17 Investment income percentage for 2014 (line 10c, column (f) divided by line 13, column (f)) . . . . .	17	%
18 Investment income percentage from 2013 Schedule A, Part III, line 17 . . . . .	18	%

19a 33 1/3% support tests - 2014. If the organization did not check the box on line 14, and line 15 is more than 33 1/3%, and line 17 is not more than 33 1/3%, check this box and stop here. The organization qualifies as a publicly supported organization ▶

b 33 1/3% support tests - 2013. If the organization did not check a box on line 14 or line 19a, and line 16 is more than 33 1/3%, and line 18 is not more than 33 1/3%, check this box and stop here. The organization qualifies as a publicly supported organization ▶

20 Private foundation. If the organization did not check a box on line 14, 19a, or 19b, check this box and see instructions ▶

**Part IV Supporting Organizations**

(Complete only if you checked a box on line 11 of Part I. If you checked 11a of Part I, complete Sections A and B. If you checked 11b of Part I, complete Sections A and C. If you checked 11c of Part I, complete Sections A, D, and E. If you checked 11d of Part I, complete Sections A and D, and complete Part V.)

**Section A. All Supporting Organizations**

	Yes	No
1 Are all of the organization's supported organizations listed by name in the organization's governing documents? If "No," describe in Part VI how the supported organizations are designated. If designated by class or purpose, describe the designation. If historic and continuing relationship, explain.		
2 Did the organization have any supported organization that does not have an IRS determination of status under section 509(a)(1) or (2)? If "Yes," explain in Part VI how the organization determined that the supported organization was described in section 509(a)(1) or (2).		
3a Did the organization have a supported organization described in section 501(c)(4), (5), or (6)? If "Yes," answer (b) and (c) below.		
b Did the organization confirm that each supported organization qualified under section 501(c)(4), (5), or (6) and satisfied the public support tests under section 509(a)(2)? If "Yes," describe in Part VI when and how the organization made the determination.		
c Did the organization ensure that all support to such organizations was used exclusively for section 170(c)(2)(B) purposes? If "Yes," explain in Part VI what controls the organization put in place to ensure such use.		
4a Was any supported organization not organized in the United States ("foreign supported organization")? If "Yes" and if you checked 11a or 11b in Part I, answer (b) and (c) below.		
b Did the organization have ultimate control and discretion in deciding whether to make grants to the foreign supported organization? If "Yes," describe in Part VI how the organization had such control and discretion despite being controlled or supervised by or in connection with its supported organizations.		
c Did the organization support any foreign supported organization that does not have an IRS determination under sections 501(c)(3) and 509(a)(1) or (2)? If "Yes," explain in Part VI what controls the organization used to ensure that all support to the foreign supported organization was used exclusively for section 170(c)(2)(B) purposes.		
5a Did the organization add, substitute, or remove any supported organizations during the tax year? If "Yes," answer (b) and (c) below (if applicable). Also, provide detail in Part VI, including (i) the names and EIN numbers of the supported organizations added, substituted, or removed, (ii) the reasons for each such action, (iii) the authority under the organizing document authorizing such action, and (iv) how the action was accomplished (such as by amendment to the organizing document).		
b Type I or Type II only. Was any added or substituted supported organization part of a class already designated in the organization's organizing document?		
c Substitutions only. Was the substitution the result of an event beyond the organization's control?		
6 Did the organization provide support (whether in the form of grants or the provision of services or facilities) to anyone other than (a) its supported organizations, (b) individuals that are part of the charitable class benefited by one or more of its supported organizations, or (c) other supporting organizations that also support or benefit one or more of the filing organization's supported organizations? If "Yes," provide detail in Part VI.		
7 Did the organization provide a grant, loan, compensation, or other similar payment to a substantial contributor (defined in IRC 4958(c)(3)(C)), a family member of a substantial contributor, or a 35-percent controlled entity with regard to a substantial contributor? If "Yes," complete Part I of Schedule L (Form 990).		
8 Did the organization make a loan to a disqualified person (as defined in section 4958) not described in line 7? If "Yes," complete Part I of Schedule L (Form 990).		
9a Was the organization controlled directly or indirectly at any time during the tax year by one or more disqualified persons as defined in section 4946 (other than foundation managers and organizations described in section 509(a)(1) or (2))? If "Yes," provide detail in Part VI.		
b Did one or more disqualified persons (as defined in line 9(a)) hold a controlling interest in any entity in which the supporting organization had an interest? If "Yes," provide detail in Part VI.		
c Did a disqualified person (as defined in line 9(a)) have an ownership interest in, or derive any personal benefit from, assets in which the supporting organization also had an interest? If "Yes," provide detail in Part VI.		
10a Was the organization subject to the excess business holdings rules of IRC 4943 because of IRC 4943(f) (regarding certain Type II supporting organizations, and all Type III non-functionally integrated supporting organizations)? If "Yes," answer (b) below.		
b Did the organization have any excess business holdings in the tax year? (Use Schedule C, Form 4720, to determine whether the organization had excess business holdings.)		

**Part IV Supporting Organizations (continued)**

	Yes	No
<b>11</b> Has the organization accepted a gift or contribution from any of the following persons?		
<b>a</b> A person who directly or indirectly controls, either alone or together with persons described in (b) and (c) below, the governing body of a supported organization?	11a	
<b>b</b> A family member of a person described in (a) above?	11b	
<b>c</b> A 35% controlled entity of a person described in (a) or (b) above? If "Yes" to a, b, or c, provide detail in Part VI.	11c	

**Section B. Type I Supporting Organizations**

	Yes	No
<b>1</b> Did the directors, trustees, or membership of one or more supported organizations have the power to regularly appoint or elect at least a majority of the organization's directors or trustees at all times during the tax year? If "No," describe in Part VI how the supported organization(s) effectively operated, supervised, or controlled the organization's activities. If the organization had more than one supported organization, describe how the powers to appoint and/or remove directors or trustees were allocated among the supported organizations and what conditions or restrictions, if any, applied to such powers during the tax year.	1	
<b>2</b> Did the organization operate for the benefit of any supported organization other than the supported organization(s) that operated, supervised, or controlled the supporting organization? If "Yes," explain in Part VI how providing such benefit carried out the purposes of the supported organization(s) that operated, supervised, or controlled the supporting organization.	2	

**Section C. Type II Supporting Organizations**

	Yes	No
<b>1</b> Were a majority of the organization's directors or trustees during the tax year also a majority of the directors or trustees of each of the organization's supported organization(s)? If "No," describe in Part VI how control or management of the supporting organization was vested in the same persons that controlled or managed the supported organization(s).	1	

**Section D. All Type III Supporting Organizations**

	Yes	No
<b>1</b> Did the organization provide to each of its supported organizations, by the last day of the fifth month of the organization's tax year, (1) a written notice describing the type and amount of support provided during the prior tax year, (2) a copy of the Form 990 that was most recently filed as of the date of notification, and (3) copies of the organization's governing documents in effect on the date of notification, to the extent not previously provided?	1	
<b>2</b> Were any of the organization's officers, directors, or trustees either (i) appointed or elected by the supported organization(s) or (ii) serving on the governing body of a supported organization? If "No," explain in Part VI how the organization maintained a close and continuous working relationship with the supported organization(s).	2	
<b>3</b> By reason of the relationship described in (2), did the organization's supported organizations have a significant voice in the organization's investment policies and in directing the use of the organization's income or assets at all times during the tax year? If "Yes," describe in Part VI the role the organization's supported organizations played in this regard.	3	

**Section E. Type III Functionally-Integrated Supporting Organizations**

<b>1</b> Check the box next to the method that the organization used to satisfy the Integral Part Test during the year (see instructions)			
<b>a</b> <input type="checkbox"/> The organization satisfied the Activities Test. Complete line 2 below.			
<b>b</b> <input type="checkbox"/> The organization is the parent of each of its supported organizations. Complete line 3 below.			
<b>c</b> <input type="checkbox"/> The organization supported a governmental entity. Describe in Part VI how you supported a government entity (see instructions).			
<b>2</b> Activities Test. Answer (a) and (b) below.		Yes	No
<b>a</b> Did substantially all of the organization's activities during the tax year directly further the exempt purposes of the supported organization(s) to which the organization was responsive? If "Yes," then in Part VI identify those supported organizations and explain how these activities directly furthered their exempt purposes, how the organization was responsive to those supported organizations, and how the organization determined that these activities constituted substantially all of its activities.	2a		
<b>b</b> Did the activities described in (a) constitute activities that, but for the organization's involvement, one or more of the organization's supported organization(s) would have been engaged in? If "Yes," explain in Part VI the reasons for the organization's position that its supported organization(s) would have engaged in these activities but for the organization's involvement.	2b		
<b>3</b> Parent of Supported Organizations. Answer (a) and (b) below.			
<b>a</b> Did the organization have the power to regularly appoint or elect a majority of the officers, directors, or trustees of each of the supported organizations? Provide details in Part VI.	3a		
<b>b</b> Did the organization exercise a substantial degree of direction over the policies, programs, and activities of each of its supported organizations? If "Yes," describe in Part VI the role played by the organization in this regard.	3b		

**Part V Type III Non-Functionally Integrated 509(a)(3) Supporting Organizations**

1  Check here if the organization satisfied the Integral Part Test as a qualifying trust on Nov 20, 1970 See instructions. All other Type III non-functionally integrated supporting organizations must complete Sections A through E

Section A - Adjusted Net Income		(A) Prior Year	(B) Current Year (optional)
1	Net short-term capital gain	1	
2	Recoveries of prior-year distributions	2	
3	Other gross income (see instructions)	3	
4	Add lines 1 through 3	4	
5	Depreciation and depletion	5	
6	Portion of operating expenses paid or incurred for production or collection of gross income or for management, conservation, or maintenance of property held for production of income (see instructions)	6	
7	Other expenses (see instructions)	7	
8	Adjusted Net Income (subtract lines 5, 6 and 7 from line 4)	8	
Section B - Minimum Asset Amount		(A) Prior Year	(B) Current Year (optional)
1 Aggregate fair market value of all non-exempt-use assets (see instructions for short tax year or assets held for part of year)			
a	Average monthly value of securities	1a	
b	Average monthly cash balances	1b	
c	Fair market value of other non-exempt-use assets	1c	
d	Total (add lines 1a, 1b, and 1c)	1d	
e	Discount claimed for blockage or other factors (explain in detail in Part VI)		
2	Acquisition indebtedness applicable to non-exempt-use assets	2	
3	Subtract line 2 from line 1d	3	
4	Cash deemed held for exempt use Enter 1-1/2% of line 3 (for greater amount, see instructions)	4	
5	Net value of non-exempt-use assets (subtract line 4 from line 3)	5	
6	Multiply line 5 by .035	6	
7	Recoveries of prior-year distributions	7	
8	Minimum Asset Amount (add line 7 to line 6)	8	
Section C - Distributable Amount			Current Year
1	Adjusted net income for prior year (from Section A, line 8, Column A)	1	
2	Enter 85% of line 1	2	
3	Minimum asset amount for prior year (from Section B, line 8, Column A)	3	
4	Enter greater of line 2 or line 3	4	
5	Income tax imposed in prior year	5	
6	Distributable Amount Subtract line 5 from line 4, unless subject to emergency temporary reduction (see instructions)	6	
7	<input type="checkbox"/> Check here if the current year is the organization's first as a non-functionally-integrated Type III supporting organization (see instructions)		

**Part V Type III Non-Functionally Integrated 509(a)(3) Supporting Organizations (continued)**

Section D - Distributions	Current Year
1 Amounts paid to supported organizations to accomplish exempt purposes	
2 Amounts paid to perform activity that directly furthers exempt purposes of supported organizations, in excess of income from activity	
3 Administrative expenses paid to accomplish exempt purposes of supported organizations	
4 Amounts paid to acquire exempt-use assets	
5 Qualified set-aside amounts (prior IRS approval required)	
6 Other distributions (describe in Part VI) See instructions	
7 Total annual distributions. Add lines 1 through 6	
8 Distributions to attentive supported organizations to which the organization is responsive (provide details in Part VI) See instructions	
9 Distributable amount for 2014 from Section C, line 6	
10 Line 8 amount divided by Line 9 amount	

Section E - Distribution Allocations (see instructions)	(i) Excess Distributions	(ii) Underdistributions Pre-2014	(iii) Distributable Amount for 2014
1 Distributable amount for 2014 from Section C, line 6			
2 Underdistributions, if any, for years prior to 2014 (reasonable cause required-see instructions)			
3 Excess distributions carryover, if any, to 2014			
a			
b			
c			
d			
e From 2013 . . . . .			
f Total of lines 3a through e			
g Applied to underdistributions of prior years			
h Applied to 2014 distributable amount			
i Carryover from 2009 not applied (see instructions)			
j Remainder Subtract lines 3g, 3h, and 3i from 3f			
4 Distributions for 2014 from Section D, line 7 \$			
a Applied to underdistributions of prior years			
b Applied to 2014 distributable amount			
c Remainder Subtract lines 4a and 4b from 4			
5 Remaining underdistributions for years prior to 2014, if any Subtract lines 3g and 4a from line 2 (if amount greater than zero, see instructions)			
6 Remaining underdistributions for 2014 Subtract lines 3h and 4b from line 1 (if amount greater than zero, see instructions)			
7 Excess distributions carryover to 2015 Add lines 3j and 4c			
8 Breakdown of line 7			
a			
b			
c			
d Excess from 2013 . . . . .			
e Excess from 2014 . . . . .			

**Part VI** **Supplemental Information.** Provide the explanations required by Part II, line 10, Part II, line 17a or 17b; and Part III, line 12. Also complete this part for any additional information. (See instructions)

SCHEDULE D (Form 990)

Supplemental Financial Statements

Complete if the organization answered "Yes" to Form 990, Part IV, line 6, 7, 8, 9, 10, 11a, 11b, 11c, 11d, 11e, 11f, 12a, or 12b

OMB No 1545-0047

2014

Open to Public Inspection

Department of the Treasury Internal Revenue Service

Information about Schedule D (Form 990) and its instructions is at www.irs.gov/form990.

Name of the organization

Employer identification number

TMT INTERNATIONAL OBSERVATORY LLC

30-0833462

Part I Organizations Maintaining Donor Advised Funds or Other Similar Funds or Accounts.

Complete if the organization answered "Yes" to Form 990, Part IV, line 6.

Table with 2 columns: (a) Donor advised funds, (b) Funds and other accounts. Rows include: 1 Total number at end of year, 2 Aggregate value of contributions to (during year), 3 Aggregate value of grants from (during year), 4 Aggregate value at end of year, 5 Did the organization inform all donors and donor advisors in writing that the assets held in donor advised funds are the organization's property, subject to the organization's exclusive legal control?, 6 Did the organization inform all grantees, donors, and donor advisors in writing that grant funds can be used only for charitable purposes and not for the benefit of the donor or donor advisor, or for any other purpose conferring impermissible private benefit?

Part II Conservation Easements.

Complete if the organization answered "Yes" to Form 990, Part IV, line 7

Form with multiple sections: 1 Purpose(s) of conservation easements held by the organization (check all that apply), 2 Complete lines 2a through 2d if the organization held a qualified conservation contribution in the form of a conservation easement on the last day of the tax year, 3 Number of conservation easements modified, transferred, released, extinguished, or terminated by the organization during the tax year, 4 Number of states where property subject to conservation easement is located, 5 Does the organization have a written policy regarding the periodic monitoring, inspection, handling of violations, and enforcement of the conservation easements it holds?, 6 Staff and volunteer hours devoted to monitoring, inspecting, and enforcing conservation easements during the year, 7 Amount of expenses incurred in monitoring, inspecting, and enforcing conservation easements during the year, 8 Does each conservation easement reported on line 2(d) above satisfy the requirements of section 170(h)(4)(B)(i) and section 170(h)(4)(B)(ii)?, 9 In Part XIII, describe how the organization reports conservation easements in its revenue and expense statement, and balance sheet, and include, if applicable, the text of the footnote to the organization's financial statements that describes the organization's accounting for conservation easements.

Part III Organizations Maintaining Collections of Art, Historical Treasures, or Other Similar Assets.

Complete if the organization answered "Yes" to Form 990, Part IV, line 8

Form with multiple sections: 1a If the organization elected, as permitted under SFAS 116 (ASC 958), not to report in its revenue statement and balance sheet works of art, historical treasures, or other similar assets held for public exhibition, education, or research in furtherance of public service, provide, in Part XIII, the text of the footnote to its financial statements that describes these items, 1b If the organization elected, as permitted under SFAS 116 (ASC 958), to report in its revenue statement and balance sheet works of art, historical treasures, or other similar assets held for public exhibition, education, or research in furtherance of public service, provide the following amounts relating to these items, 2 If the organization received or held works of art, historical treasures, or other similar assets for financial gain, provide the following amounts required to be reported under SFAS 116 (ASC 958) relating to these items.

For Paperwork Reduction Act Notice, see the Instructions for Form 990.

Schedule D (Form 990) 2014

JSA 4E1288 1 000

3792IX 7377

**Part III Organizations Maintaining Collections of Art, Historical Treasures, or Other Similar Assets (continued)**

- 3 Using the organization's acquisition, accession, and other records, check any of the following that are a significant use of its collection items (check all that apply)
- a  Public exhibition
  - b  Scholarly research
  - c  Preservation for future generations
  - d  Loan or exchange programs
  - e  Other \_\_\_\_\_
- 4 Provide a description of the organization's collections and explain how they further the organization's exempt purpose in Part XIII
- 5 During the year, did the organization solicit or receive donations of art, historical treasures, or other similar assets to be sold to raise funds rather than to be maintained as part of the organization's collection?  Yes  No

**Part IV Escrow and Custodial Arrangements.** Complete if the organization answered "Yes" to Form 990, Part IV, line 9, or reported an amount on Form 990, Part X, line 21

- 1a Is the organization an agent, trustee, custodian or other intermediary for contributions or other assets not included on Form 990, Part X?  Yes  No
- b If "Yes," explain the arrangement in Part XIII and complete the following table
- |                                 | Amount |
|---------------------------------|--------|
| c Beginning balance             | 1c     |
| d Additions during the year     | 1d     |
| e Distributions during the year | 1e     |
| f Ending balance                | 1f     |
- 2a Did the organization include an amount on Form 990, Part X, line 21, for escrow or custodial account liability?  Yes  No
- b If "Yes," explain the arrangement in Part XIII. Check here if the explanation has been provided in Part XIII.  Yes  No

**Part V Endowment Funds.** Complete if the organization answered "Yes" to Form 990, Part IV, line 10

	(a) Current year	(b) Prior year	(c) Two years back	(d) Three years back	(e) Four years back
1a Beginning of year balance					
b Contributions					
c Net investment earnings, gains, and losses					
d Grants or scholarships					
e Other expenditures for facilities and programs					
f Administrative expenses					
g End of year balance					

- 2 Provide the estimated percentage of the current year end balance (line 1g, column (a)) held as
- a Board designated or quasi-endowment  %
  - b Permanent endowment  %
  - c Temporarily restricted endowment  %
- The percentages in lines 2a, 2b, and 2c should equal 100%
- 3a Are there endowment funds not in the possession of the organization that are held and administered for the organization by
- |   | Yes    | No |
|---|--------|----|
| (i) unrelated organizations   | 3a(i)  |    |
| (ii) related organizations  | 3a(ii) |    |
| b If "Yes" to 3a(ii), are the related organizations listed as required on Schedule R? | 3b     |    |
- 4 Describe in Part XIII the intended uses of the organization's endowment funds

**Part VI Land, Buildings, and Equipment.** Complete if the organization answered "Yes" to Form 990, Part IV, line 11a. See Form 990, Part X, line 10

Description of property	(a) Cost or other basis (investment)	(b) Cost or other basis (other)	(c) Accumulated depreciation	(d) Book value
1a Land				
b Buildings				
c Leasehold improvements				
d Equipment				
e Other				
Total. Add lines 1a through 1e (Column (d) must equal Form 990, Part X, column (B), line 10(c))				

**Part VII Investments - Other Securities.**

Complete if the organization answered "Yes" to Form 990, Part IV, line 11b See Form 990, Part X, line 12.

(a) Description of security or category (including name of security)	(b) Book value	(c) Method of valuation Cost or end-of-year market value
(1) Financial derivatives		
(2) Closely-held equity interests		
(3) Other		
(A)		
(B)		
(C)		
(D)		
(E)		
(F)		
(G)		
(H)		
<b>Total.</b> (Column (b) must equal Form 990, Part X, col (B) line 12) ▶		

**Part VIII Investments - Program Related.**

Complete if the organization answered "Yes" to Form 990, Part IV, line 11c See Form 990, Part X, line 13

(a) Description of investment	(b) Book value	(c) Method of valuation Cost or end-of-year market value
(1)		
(2)		
(3)		
(4)		
(5)		
(6)		
(7)		
(8)		
(9)		
<b>Total.</b> (Column (b) must equal Form 990, Part X, col (B) line 13) ▶		

**Part IX Other Assets.**

Complete if the organization answered "Yes" to Form 990, Part IV, line 11d See Form 990, Part X, line 15.

(a) Description	(b) Book value
(1) CONSTRUCTION IN PROGRESS	7,414,861.
(2)	
(3)	
(4)	
(5)	
(6)	
(7)	
(8)	
(9)	
<b>Total.</b> (Column (b) must equal Form 990, Part X, col (B) line 15) . . . . . ▶	7,414,861.

**Part X Other Liabilities.**

Complete if the organization answered "Yes" to Form 990, Part IV, line 11e or 11f. See Form 990, Part X, line 25.

1. (a) Description of liability	(b) Book value
(1) Federal income taxes	
(2) CHARITY PAYABLE (CURRENT PORTION)	1,000,000.
(3) CHARITY PAYABLE (LONG TERM PORTION)	10,855,800.
(4) ASSET RETIREMENT OBLIGATION	410,876.
(5) DEFERRED LEASE PAYABLE	219,193.
(6)	
(7)	
(8)	
(9)	
<b>Total.</b> (Column (b) must equal Form 990, Part X, col (B) line 25) ▶	12,485,869.

2. Liability for uncertain tax positions In Part XIII, provide the text of the footnote to the organization's financial statements that reports the organization's liability for uncertain tax positions under FIN 48 (ASC 740) Check here if the text of the footnote has been provided in Part XIII

**Part XI Reconciliation of Revenue per Audited Financial Statements With Revenue per Return.**  
 Complete if the organization answered "Yes" to Form 990, Part IV, line 12a.

1	Total revenue, gains, and other support per audited financial statements		1	
2	Amounts included on line 1 but not on Form 990, Part VIII, line 12			
a	Net unrealized gains (losses) on investments	2a		
b	Donated services and use of facilities	2b		
c	Recoveries of prior year grants	2c		
d	Other (Describe in Part XIII)	2d		
e	Add lines 2a through 2d		2e	
3	Subtract line 2e from line 1		3	
4	Amounts included on Form 990, Part VIII, line 12, but not on line 1			
a	Investment expenses not included on Form 990, Part VIII, line 7b	4a		
b	Other (Describe in Part XIII)	4b	12,198,719.	
c	Add lines 4a and 4b		4c	12,198,719.
5	Total revenue Add lines 3 and 4c. (This must equal Form 990, Part I, line 12)		5	12,198,719.

**Part XII Reconciliation of Expenses per Audited Financial Statements With Expenses per Return.**  
 Complete if the organization answered "Yes" to Form 990, Part IV, line 12a

1	Total expenses and losses per audited financial statements		1	15,696,345.
2	Amounts included on line 1 but not on Form 990, Part IX, line 25			
a	Donated services and use of facilities	2a		
b	Prior year adjustments	2b		
c	Other losses	2c		
d	Other (Describe in Part XIII)	2d		
e	Add lines 2a through 2d		2e	
3	Subtract line 2e from line 1		3	15,696,345.
4	Amounts included on Form 990, Part IX, line 25, but not on line 1			
a	Investment expenses not included on Form 990, Part VIII, line 7b	4a		
b	Other (Describe in Part XIII)	4b		
c	Add lines 4a and 4b		4c	
5	Total expenses Add lines 3 and 4c. (This must equal Form 990, Part I, line 18)		5	15,696,345.

**Part XIII Supplemental Information.**

Provide the descriptions required for Part II, lines 3, 5, and 9, Part III, lines 1a and 4, Part IV, lines 1b and 2b, Part V, line 4, Part X, line 2, Part XI, lines 2d and 4b, and Part XII, lines 2d and 4b Also complete this part to provide any additional information

SCHEDULE D, PART X, LINE 2

TIO HAS NO REPORTING REQUIREMENTS FOR UNCERTAIN TAX PROVISIONS FOR THE

YEAR ENDED DECEMBER 31, 2014.

SCHEDULE D, PART XI, LINE 4B

MEMBER EQUITY CONTRIBUTIONS \$12,198,719

**Part XIII** Supplemental Information *(continued)*

**SCHEDULE I  
(Form 990)**

**Grants and Other Assistance to Organizations,  
Governments, and Individuals in the United States**

OMB No 1545-0047

**2014**

**Open to Public  
Inspection**

Department of the Treasury  
Internal Revenue Service

Complete if the organization answered "Yes" to Form 990, Part IV, line 21 or 22.  
▶ Attach to Form 990.

▶ Information about Schedule I (Form 990) and its instructions is at [www.irs.gov/form990](http://www.irs.gov/form990).

Name of the organization

TMT INTERNATIONAL OBSERVATORY LLC

Employer identification number

30-0833462

**Part I General Information on Grants and Assistance**

- 1 Does the organization maintain records to substantiate the amount of the grants or assistance, the grantees' eligibility for the grants or assistance, and the selection criteria used to award the grants or assistance?  Yes  No
- 2 Describe in Part IV the organization's procedures for monitoring the use of grant funds in the United States

**Part II Grants and Other Assistance to Domestic Organizations and Domestic Governments.** Complete if the organization answered "Yes" to Form 990, Part IV, line 21, for any recipient that received more than \$5,000. Part II can be duplicated if additional space is needed

1 (a) Name and address of organization or government	(b) EIN	(c) IRC section if applicable	(d) Amount of cash grant	(e) Amount of non-cash assistance	(f) Method of valuation (book, FMV, appraisal, other)	(g) Description of non-cash assistance	(h) Purpose of grant or assistance
(1) KE ALII PAUHI FOUNDATION 567 S KING ST, #160 HONOLULU, HI 96813	94-3263044	501(C)(3)	125,000				COMMUNITY SUPPORT
(2) HAWAII COMMUNITY FOUNDATION 827 FORT STREET MALL HONOLULU, HI 96813	99-0261283	501(C)(3)	375,000				COMMUNITY SUPPORT
(3)							
(4)							
(5)							
(6)							
(7)							
(8)							
(9)							
(10)							
(11)							
(12)							

2 Enter total number of section 501(c)(3) and government organizations listed in the line 1 table 2.

3 Enter total number of other organizations listed in the line 1 table

For Paperwork Reduction Act Notice, see the Instructions for Form 990.

Schedule I (Form 990) (2014)

JSA

4E1288 1 000

3792IX 7377

**Part III Grants and Other Assistance to Individuals in the United States.** Complete if the organization answered "Yes" on Form 990, Part IV, line 22  
Part III can be duplicated if additional space is needed.

(a) Type of grant or assistance	(b) Number of recipients	(c) Amount of cash grant	(d) Amount of non-cash assistance	(e) Method of valuation (book, FMV, appraisal, other)	(f) Description of non-cash assistance
1					
2					
3					
4					
5					
6					
7					

**Part IV Supplemental Information.** Complete this part to provide the information required in Part I, line 2, Part III, column (b), and any other additional information

SCHEDULE I, PART I, LINE 2

TIO'S GRANTS PRIMARILY SUPPORT SCIENCE, TECHNOLOGY, ENGINEERING AND MATH (STEM) EDUCATION IN HAWAI'I AND THE IMPROVEMENT OF EDUCATIONAL OPPORTUNITIES FOR STUDENTS IN HAWAI'I.

TIO REQUIRES THAT THE GRANT RECEIVING ORGANIZATION SUBMIT A FINAL REPORT OUTLINING THE USE OF THE FUNDS WITHIN 90 DAYS OF SCHEDULED PROGRAM COMPLETION.

**SCHEDULE J  
(Form 990)**

**Compensation Information**

OMB No 1545-0047

**2014**

**Open to Public  
Inspection**

Department of the Treasury  
Internal Revenue Service

For certain Officers, Directors, Trustees, Key Employees, and Highest Compensated Employees  
 ▶ Complete if the organization answered "Yes" on Form 990, Part IV, line 23.  
 ▶ Attach to Form 990.  
 ▶ Information about Schedule J (Form 990) and its instructions is at [www.irs.gov/form990](http://www.irs.gov/form990).

Name of the organization <b>TMT INTERNATIONAL OBSERVATORY LLC</b>	Employer identification number <b>30-0833462</b>
--	---

**Part I Questions Regarding Compensation**

**1a** Check the appropriate box(es) if the organization provided any of the following to or for a person listed in Form 990, Part VII, Section A, line 1a. Complete Part III to provide any relevant information regarding these items

- |   |  |
|---|--|
| <input type="checkbox"/> First-class or charter travel<br><input type="checkbox"/> Travel for companions<br><input type="checkbox"/> Tax indemnification and gross-up payments<br><input type="checkbox"/> Discretionary spending account | <input type="checkbox"/> Housing allowance or residence for personal use<br><input type="checkbox"/> Payments for business use of personal residence<br><input type="checkbox"/> Health or social club dues or initiation fees<br><input type="checkbox"/> Personal services (e.g., maid, chauffeur, chef) |
|---|--|

**b** If any of the boxes on line 1a are checked, did the organization follow a written policy regarding payment or reimbursement or provision of all of the expenses described above? If "No," complete Part III to explain . . . . .

**2** Did the organization require substantiation prior to reimbursing or allowing expenses incurred by all directors, trustees, and officers, including the CEO/Executive Director, regarding the items checked in line 1a? . . . . .

**3** Indicate which, if any, of the following the filing organization used to establish the compensation of the organization's CEO/Executive Director. Check all that apply. Do not check any boxes for methods used by a related organization to establish compensation of the CEO/Executive Director, but explain in Part III

- |   |   |
|---|---|
| <input type="checkbox"/> Compensation committee<br><input type="checkbox"/> Independent compensation consultant<br><input type="checkbox"/> Form 990 of other organizations | <input type="checkbox"/> Written employment contract<br><input type="checkbox"/> Compensation survey or study<br><input type="checkbox"/> Approval by the board or compensation committee |
|---|---|

**4** During the year, did any person listed in Form 990, Part VII, Section A, line 1a, with respect to the filing organization or a related organization

- |  |           |   |
|--|-----------|---|
| <b>a</b> Receive a severance payment or change-of-control payment? . . . . .                             | <b>4a</b> | X |
| <b>b</b> Participate in, or receive payment from, a supplemental nonqualified retirement plan? . . . . . | <b>4b</b> | X |
| <b>c</b> Participate in, or receive payment from, an equity-based compensation arrangement? . . . . .    | <b>4c</b> | X |
- If "Yes" to any of lines 4a-c, list the persons and provide the applicable amounts for each item in Part III

**Only section 501(c)(3), 501(c)(4), and 501(c)(29) organizations must complete lines 5-9.**

**5** For persons listed in Form 990, Part VII, Section A, line 1a, did the organization pay or accrue any compensation contingent on the revenues of

- |  |           |   |
|--|-----------|---|
| <b>a</b> The organization? . . . . .         | <b>5a</b> | X |
| <b>b</b> Any related organization? . . . . . | <b>5b</b> | X |
- If "Yes" to line 5a or 5b, describe in Part III

**6** For persons listed in Form 990, Part VII, Section A, line 1a, did the organization pay or accrue any compensation contingent on the net earnings of

- |  |           |   |
|--|-----------|---|
| <b>a</b> The organization? . . . . .         | <b>6a</b> | X |
| <b>b</b> Any related organization? . . . . . | <b>6b</b> | X |
- If "Yes" to line 6a or 6b, describe in Part III

**7** For persons listed in Form 990, Part VII, Section A, line 1a, did the organization provide any non-fixed payments not described in lines 5 and 6? If "Yes," describe in Part III . . . . .

**8** Were any amounts reported in Form 990, Part VII, paid or accrued pursuant to a contract that was subject to the initial contract exception described in Regulations section 53.4958-4(a)(3)? If "Yes," describe in Part III . . . . .

**9** If "Yes" to line 8, did the organization also follow the rebuttable presumption procedure described in Regulations section 53.4958-6(c)? . . . . .

	Yes	No
<b>1a</b>		
<b>1b</b>		
<b>2</b>		
<b>3</b>		
<b>4a</b>		X
<b>4b</b>		X
<b>4c</b>		X
<b>5a</b>		X
<b>5b</b>		X
<b>6a</b>		X
<b>6b</b>		X
<b>7</b>		X
<b>8</b>		X
<b>9</b>		

For Paperwork Reduction Act Notice, see the Instructions for Form 990.

Schedule J (Form 990) 2014

JSA

4E1290 1 000

3792IX 7377

**Part II Officers, Directors, Trustees, Key Employees, and Highest Compensated Employees.** Use duplicate copies if additional space is needed

For each individual whose compensation must be reported in Schedule J, report compensation from the organization on row (i) and from related organizations, described in the instructions, on row (ii) Do not list any individuals that are not listed on Form 990, Part VII

**Note.** The sum of columns (B)(i)-(iii) for each listed individual must equal the total amount of Form 990, Part VII, Section A, line 1a, applicable column (D) and (E) amounts for that individual

(A) Name and Title		(B) Breakdown of W-2 and/or 1099-MISC compensation			(C) Retirement and other deferred compensation	(D) Nontaxable benefits	(E) Total of columns (B)(i)-(D)	(F) Compensation in column (B) reported as deferred in prior Form 990
		(i) Base compensation	(ii) Bonus & incentive compensation	(iii) Other reportable compensation				
1 GARY SANDERS PROJECT MANAGER	(i)	177,588.	0	0	0	19,891.	197,479.	0
	(ii)	0	0	0				
2 PHILIP LINDQUIST BUSINESS MANAGER	(i)	142,892.	0	0	0	17,109.	160,001.	0
	(ii)	0	0	0				
3 RAVINDER BHATIA ASSOCIATE PROJECT MANAGER	(i)	143,306.	0	0	0	56,421.	199,727.	0
	(ii)	0	0	0				
4 LAWRENCE STEPP TELESCOPE DEPARTMENT HEAD	(i)	139,364.	0	0	0	58,800.	198,164.	0
	(ii)	0	0	0				
5 SANDRA DAWSON MGR HAWAI'I COMMUNITY AFFAIRS	(i)	117,595.	0	0	0	54,545.	172,140.	0
	(ii)	0	0	0				
6 VIRGINIA FORD SENIOR OPTO MECH ENGINEER	(i)	114,016.	0	0	0	47,278.	161,294.	0
	(ii)	0	0	0				
7	(i)							
	(ii)							
8	(i)							
	(ii)							
9	(i)							
	(ii)							
10	(i)							
	(ii)							
11	(i)							
	(ii)							
12	(i)							
	(ii)							
13	(i)							
	(ii)							
14	(i)							
	(ii)							
15	(i)							
	(ii)							
16	(i)							
	(ii)							

**Part III Supplemental Information**

Complete this part to provide the information, explanation, or descriptions required for Part I, lines 1a, 1b, 3, 4a, 4b, 4c, 5a, 5b, 6a, 6b, 7, and 8, and for Part II. Also complete this part for any additional information.

FORM 990, SCHEDULE J, PART II

IN CONNECTION WITH PROFESSIONAL SERVICES RENDERED TO TIO, PHILIP LINDQUIST AND GARY SANDERS ARE COMPENSATED BY CALTECH, A TIO MEMBER ORGANIZATION. RAVINDER BHATIA, LAWRENCE STEPP, SANDRA DAWSON AND VIRGINIA FORD ARE COMPENSATED BY TMT OBSERVATORY CORPRATION ("TMT") AND PROVIDED TO TIO PURSUANT TO A PERSONNEL ADMINISTRATIVE AGREEMENT. THE AMOUNTS INCLUDED ON PART VII AND SCHEDULE J, PART II REFLECT REIMBURSEMENT AMOUNTS PAID BY TIO TO THESE UNRELATED ORGANIZATIONS FOR THE INDIVIDUAL'S SERVICES.

**SCHEDULE O**  
(Form 990 or 990-EZ)

Department of the Treasury  
Internal Revenue Service

**Supplemental Information to Form 990 or 990-EZ**

Complete to provide information for responses to specific questions on  
Form 990 or 990-EZ or to provide any additional information.  
▶ Attach to Form 990 or 990-EZ.

OMB No 1545-0047

**2014**

**Open to Public  
Inspection**

Name of the organization

TMT INTERNATIONAL OBSERVATORY LLC

Employer identification number

30-0833462

PART I, LINE 1 AND PART III, LINES 1 AND 4A

TMT INTERNATIONAL OBSERVATORY (TIO) WAS FOUNDED BY THE MEMBERS LISTED  
BELOW EXCLUSIVELY TO FURTHER CHARITABLE, EDUCATIONAL AND SCIENTIFIC  
PURPOSES AND, WITHIN SUCH LIMITS, TO ADVANCE SCIENTIFIC KNOWLEDGE AND  
EDUCATION THROUGH THE STUDY, OBSERVATION, AND COLLECTION OF IMAGES AND  
INFORMATION FROM DEEP SPACE WITH THE OBJECTIVE OF FURTHERING HUMAN  
UNDERSTANDING OF ASTRONOMY AND THE ORIGINS OF THE UNIVERSE:

1. THE REGENTS OF THE UNIVERSITY OF CALIFORNIA ("UC")
2. THE CALIFORNIA INSTITUTE OF TECHNOLOGY ("CALTECH")
3. THE NATIONAL INSTITUTES OF NATURAL SCIENCES (THE "JAPANESE NATIONAL  
INSTITUTES")
4. THE NATIONAL ASTRONOMICAL OBSERVATORIES OF THE CHINESE ACADEMY OF  
SCIENCES (THE "CHINESE ACADEMY OF SCIENCES")

TIO IS PURSUING ITS PURPOSE BY DESIGNING, DEVELOPING, CONSTRUCTING, AND  
OPERATING A "STATE-OF-THE-ART" THIRTY-METER, WORLD CLASS TELESCOPE AND  
ASSOCIATED OBSERVATORY ON MAUNA KEA IN HAWAI'I (THE "TMT PROJECT") AND,  
IN RELATION THERETO, FOSTERING ACADEMIC AND SCIENTIFIC INTERACTION AMONG  
EDUCATIONAL AND OTHER RESEARCH INSTITUTIONS ON A GLOBAL BASIS.

FORM 990, PART VI, LINE 1

THE GOVERNING BODY OF TIO IS ITS BOARD. THE BOARD IS COMPRISED OF THREE  
GOVERNORS APPOINTED BY EACH MEMBER OF THE ORGANIZATION, AND THE EXECUTIVE

Name of the organization

TMT INTERNATIONAL OBSERVATORY LLC

Employer identification number

30-0833462

DIRECTOR, WHO IS AN EX-OFFICIO GOVERNOR AND ALSO SITS ON THE BOARD. EACH MEMBER MUST DESIGNATE ONE OF ITS GOVERNORS AS A GOVERNOR WHO IS ENTITLED TO VOTE, SO ALTHOUGH AS OF DECEMBER 31, 2014 THE BOARD HAD A TOTAL OF 13 GOVERNORS, ONLY FOUR GOVERNORS ARE VOTING MEMBERS OF THE BOARD.

FORM 990, PART VI, LINE 2

CHAIRPERSON, HENRY YANG, IS CHANCELLOR AT THE UNIVERSITY OF CALIFORNIA, SANTA BARBARA. GOVERNOR, MICHAEL BOLTE, AND TREASURER, NATHAN BROSTROM, ARE EMPLOYED BY THE UNIVERSITY OF CALIFORNIA.

GOVERNOR DEAN CURRIE, IS VP FOR BUSINESS AND FINANCE AT CALIFORNIA INSTITUTE OF TECHNOLOGY. EXECUTIVE DIRECTOR EDWARD C STONE, IS PROFESSOR OF PHYSICS AT CALIFORNIA INSTITUTE OF TECHNOLOGY. GOVERNOR B. THOMAS SOIFER, IS CHAIR, DIVISION OF PHYSICS, MATHEMATICS AND ASTRONOMY AT CALIFORNIA INSTITUTE OF TECHNOLOGY. GOVERNOR SHRINIVAS KULKARNI, IS PROFESSOR OF ASTRONOMY AND PLANETARY SCIENCE AND DIRECTOR OF OPTICAL OBSERVATORIES AT CALIFORNIA INSTITUTE OF TECHNOLOGY.

GOVERNOR MASANORI IYE IS THE TIO JAPAN REPRESENTATIVE AND A PROFESSOR AT THE NATIONAL ASTRONOMICAL OBSERVATORY OF JAPAN, THE NATIONAL INSTITUTE OF NATURAL SCIENCES. GOVERNOR TOMONORI USUDA IS THE DIRECTORY OF THE TMT-JAPAN PROJECT AND A PROFESSOR AT THE NATIONAL ASTRONOMICAL OBSERVATORY OF JAPAN, THE NATIONAL INSTITUTE OF NATURAL SCIENCES.

FORM 990, PART VI, LINES 6 AND 7

Name of the organization TMT INTERNATIONAL OBSERVATORY LLC	Employer identification number 30-0833462
---	--

AS OF 12/31/2014 THE MEMBERS OF TIO WERE:

1. THE REGENTS OF THE UNIVERSITY OF CALIFORNIA
2. THE CALIFORNIA INSTITUTE OF TECHNOLOGY
3. THE NATIONAL INSTITUTES OF NATURAL SCIENCES
4. THE NATIONAL ASTRONOMICAL OBSERVATORIES OF THE CHINESE ACADEMY OF SCIENCES

GOVERNANCE DECISIONS OF THE ORGANIZATION INCLUDING THE APPOINTMENT AND NUMBER OF GOVERNORS, ADMISSION OF NEW MEMBERS AND THE TERMS OF SUCH ADMISSION ARE RESERVED TO THE MEMBERS OF THE ORGANIZATION.

FORM 990, PART VI, LINE 11B

WORKING WITH PRICEWATERHOUSECOOPERS, LLP ("PWC"), THE FORM 990 IS PREPARED. THE FORM 990 IS THEN REVIEWED BY MANAGEMENT, THE LEGAL COUNSEL AND THE AUDIT COMMITTEE. PRIOR TO FILING WITH THE IRS THE FINAL FORM 990 IS MADE AVAILABLE TO THE FULL BOARD. PWC SIGNS THE RETURN AS PAID PREPARER AND ELECTRONICALLY FILES THE RETURN WITH THE IRS.

FORM 990, PART VI, LINE 12C

ON AN ANNUAL BASIS, TIO DISTRIBUTES CONFLICT OF INTEREST QUESTIONNAIRES WHICH THE BOARD MEMBERS, KEY EMPLOYEES AND HIGHEST COMPENSATED EMPLOYEES COMPLETE AND RETURN. MANAGEMENT OF TMT REVIEWS THE RETURNED FORMS FOR COMPLIANCE. IF A CONFLICT IS DISCOVERED IT IS ESCALATED TO THE APPROPRIATE PARTY WITHIN THE ORGANIZATION.

FORM 990, PART VI, LINE 18

Name of the organization TMT INTERNATIONAL OBSERVATORY LLC	Employer identification number 30-0833462
---	--

FORM 990 WILL ALSO BE MADE AVAILABLE THROUGH GUIDESTAR.ORG.

FORM 990, PART VI, LINE 19

AVAILABILITY OF GOVERNING DOCUMENTS AND POLICIES, CONFLICT OF INTEREST POLICY, AND FINANCIAL STATEMENTS ARE AVAILABLE TO THE PUBLIC UPON REQUEST.

FORM 990, PART VII

IN CONNECTION WITH PROFESSIONAL SERVICES RENDERED TO TIO, PHILIP LINDQUIST AND GARY SANDERS ARE COMPENSATED BY CALTECH, A TIO MEMBER ORGANIZATION. RAVINDER BHATIA, LAWRENCE STEPP, SANDRA DAWSON AND VIRGINIA FORD ARE COMPENSATED BY TMT OBSERVATORY CORPRATION ("TMT") AND PROVIDED TO TIO PURSUANT TO A PERSONNEL ADMINISTRATIVE AGREEMENT. THE AMOUNTS INCLUDED ON PART VII AND SCHEDULE J, PART II REFLECT REIMBURSEMENT AMOUNTS PAID BY TIO TO THESE UNRELATED ORGANIZATIONS FOR THE INDIVIDUAL'S SERVICES.

ATTACHMENT 1

990, PART VII- COMPENSATION OF THE FIVE HIGHEST PAID IND. CONTRACTORS

<u>NAME AND ADDRESS</u>	<u>DESCRIPTION OF SERVICES</u>	<u>COMPENSATION</u>
CALIFORNIA INSTITUTE OF TECHNOLOGY 1200 E. CALIFORNIA BLVD PASADENA, CA 91125	SCIENTIFIC SERVICES	831,659.
TRIAD PROJECT MANAGEMENT SERVICES 14325 WILLARD ROAD, SUITE 107 CHANTILLY, VA 20151	PROFESSIONAL SVCS	678,809.
M3 ENGINEERING 2051 W. SUNSET ROAD, #101 TUCSON, AZ 85704	ENGINEERING	299,289.
ARTHUR GALLAGHER & CO BROKERS OF CA 2 PIERCE PLACE ITASCA, IL 60143	INSURANCE	110,005.

Name of the organization

Employer identification number

TMT INTERNATIONAL OBSERVATORY LLC

30-0833462

ATTACHMENT 1 (CONT'D)

990, PART VII- COMPENSATION OF THE FIVE HIGHEST PAID IND. CONTRACTORS

<u>NAME AND ADDRESS</u>	<u>DESCRIPTION OF SERVICES</u>	<u>COMPENSATION</u>
GOODFELLOWS BROS 1300 N. HOLOPONO ST, SUITE 201 KIHEI, HI 96753	ENGINEERING	109,402.

**BOARD OF LAND AND NATURAL RESOURCES**

**STATE OF HAWAI'I**

In the Matter of: ) Case No. BLNR-CC-16-002  
)  
A Contested Case Hearing Re: ) **CERTIFICATE OF SERVICE**  
Conservation District Use Permit )  
(COUP) HA-3568 for the Thirty Meter )  
Telescope at the Mauna Kea Science )  
Reserve, Kaohe Mauka, Hamakua )  
District, Island of Hawai'i, TMK (3) 4-4-015:009 )  
\_\_\_\_\_ )

CERTIFICATE OF SERVICE

We hereby certify that a copy of the foregoing was served on the following via email unless otherwise specified below:

Michael Cain  
dlnr.maunakea@hawaii.gov  
*Custodian of the Records*

Carlsmith Ball LLP  
isandison@carlsmith.com  
tluikwan@carlsmith.com  
jpm@carlsmith.com  
lmcaneley@carlsmith.com  
*Counsels for Applicant  
University of Hawai'i at Hilo*

C.M. Kaho'okahi Kanuha  
kahookahi.kukiaimauna@gmail.com

E. Kalani Flores  
ekflores@hawaiiintel.net

B. Pualani Case  
puacase@hawaiiintel.net

Deborah J. Ward  
cordylinecolor@gmail.com

Kealoha Pisciotta and Mauna Kea  
Anaina Hou  
keomaivg@gmail.com

J. Leina'ala Sleightholm  
Leinaala.Mauna@gmail.com

Moses Kealamakia, Jr.  
mkealama@yahoo.com  
*Witness for the Hearings Officer*

Watanabe Ing LLP  
First Haw'n Center, Suite1250  
999 Bishop Street  
Honolulu, HI 96813  
rshinyama@wik.com  
douging@wik.com  
*Counsels for the TMT  
International Observatory*

Mehana Kihoi  
uhiwai@live.com

Joseph Kualii Lindsey Camara  
kualii@hotmail.com

Torkildson Katz Moore  
Hetherington & Harris  
lsa@torkildson.com  
njc@torkildson.com  
*Counsels for Perpetuating  
Unique Educational  
Opportunities*

Harry Fergerstrom  
P.O. Box 951  
Kurtistown, HI 96760

Dwight J. Vincente  
2608 Ainaola drive  
Hilo, Hawaiian Kingdom

Kalikolehua Kanaele  
akulele@yahoo.com

Stephanie-Malia Tabbada  
s.tabbada@hawaiiintel.net

Tiffnie Kakalia  
tiffniekakalia@gmail.com

Glen Kila  
makakila@gmail.com

Brannon Kamahana Kealoha  
brannonk@hawaii.edu

Clarence Kukauakahi Ching  
kahiwaL@cs.com

William Freitas  
pohaku7@yahoo.com

Paul K. Neves  
Kealiikea@yahoo.com

Lanny Alan Sinkin  
lanny.sinkin@gmail.com  
*Representative Temple of Lono*

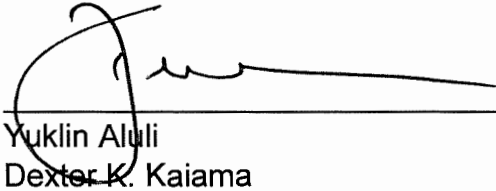
Cindy Freitas  
hanahanai@hawaii.rr.com

Wilma H. Holi  
P.O. Box 368  
Hanapepe, HI 96716  
*Witness for the Hearings Officer*

DATED:

Kailua, Hawaii,

11/18/17



Yuklin Aluli

Dexter K. Kaiama

Co-counsel for Petitioner KAHEA

The Hawaiian Environmental Alliance,

a domestic non-profit Corporation