



March 25, 2026

HAWAII

1164 Bishop St., Ste. 1512
Honolulu, HI 96813
tpl.org

Sent Via Email: blnr.testimony@hawaii.gov

**State Of Hawai'i - Department of Land and Natural Resources
Board Of Land and Natural Resources**

HAWAII BOARD

Marco Abbruzzese, Chair
Bank of Hawai'i

Kirstin Punu, Vice Chair
AES

Ane Bakutis
Kealopiko & UH Mānoa Plant
Extinction Prevention Program

Cathy Camp
Central Pacific Bank

Kekama Helm
Conservationist

Chris Hochuli
Merrill Lynch

Steve Kelly
James Campbell Company LLC

Ala'amoë Keolanui
OK Farms

Troy Keolanui
OK Farms

Mino McLean
Island Sotheby's Intl. Realty

John Meier
Conservationist

Blake Oshiro
Capitol Consultants of Hawaii

Jeff Overton
G70

Mahina Paishon
Waiwai Collective

Mike B. Pietsch
Title Guaranty Hawaii

Brad Punu
Green Climate Fund

Race Randle
Maui Land & Pineapple Co.

Tom Reeve
Conservationist

Ka'iulani Sodaro
Ward Village/Howard Hughes

Jonathan Sprague
Pūlama Lāna'i

Dr. Rachel Sprague
Pūlama Lāna'i

Jan Sullivan
Oceanit

Re: Testimony in Support of BLNR March 27, 2026 Meeting **Item C.3.(1)a. Save Honolua Coalition**, up to \$2,021,500 (full funding) for the acquisition of appx 17.913 acres at District of Lahaina, Island of Maui (Honolua Bay), Tax Map Key Numbers (2) 4-1-001:019, (2) 4-2-001:044, and (2) 4-2-004:032, with a conservation easement held by the County of Maui or other suitable entities.

Aloha Acting Chair Kanaka'ole and Members of the Board,

About the Project: Trust for Public Land is assisting Save Honolua Coalition to protect and purchase lands at Honolua Bay for community and cultural stewardship. The State Legacy Land Conservation Commission ranked the project number one at their January 16, 2026 meeting with the recommendation to grant the full funding request. Commissioners vetted the project through comprehensive application materials, a site visit, and a public meeting presentation by members of the Save Honolua Coalition.

Honolua Bay, in Maui Komohana (West Maui), is one of Hawai'i's cherished biocultural landscapes—rich in marine life, cultural sites, and generations of stewardship. After decades of advocacy, the north bank of Honolua Stream has been protected as a future State Park. But protection of the full bay is incomplete. Trust for Public Land (TPL) is now partnering with the Save Honolua Coalition (SHC) to bring privately held lands along the south bank into community-based stewardship. This project extends conservation across the bay and advances a co-management vision to restore cultural integrity and ecological resilience in Honolua Bay. See attached factsheet and map for more information.

We hope the board will recognize the value of these legacy lands because:

- This 'āina completes **full conservation connectivity** from the summit of Pu'u Kukui, down through Honolua Valley, into the Marine Life Conservation District.
- This 'āina, in partnership with State Parks, enables **complete conservation and management capacity** across the valley floor at the mouth of Honolua Stream—an area currently experiencing high-volume visitor impacts to cultural sites, marine and riparian resources, and the overall experience of the bay, especially for local families and community users.
- This 'āina can restore **community connection** to Honolua—creating gathering space for cultural practitioners, school groups, and local keiki to rebuild pilina and care for this once thriving Hawaiian community.

Landowner Negotiations: This is a critical moment of opportunity to return Honolua to community stewardship. The landowner has not always supported a community transfer, and it is not safe to assume that willingness will continue. Without this protection, an opportunistic owner could capture tourism revenue from the heavy visitor traffic at Honolua. Instead of managing carrying capacity, the lands could be used to draw even more visitor traffic to one of the last undeveloped coastlines in West Maui.

Funding: Matching funds are included in Mayor Richard Bissen’s FY27 budget as an appropriation from the Maui Open Space Program. See attached letters of support from County of Maui Mayor Richard Bissen and West Maui Council Member Tamara Paltin.

Community Support: Protecting Honolua is strategically aligned with the 2023 DLNR Honolua to Honokōhau Management Plan (HHMP) and the 2020 Honolua-Mokulē’ia Conservation Action Plan (CAP). Please see the attached 17 Letters of Support from a wide range of nonprofit organizations, government agencies, businesses, elected officials, and community members, and over **340 petition signatures** that overwhelmingly support the SHC purchase and protection of Honolua Bay.

1. State Senator Angus McKelvey
2. State Representative Elle Cochran
3. Maui County Mayor Richard Bissen
4. Maui County Council Member Tamara Paltin
5. DLNR, Division of State Parks, Alan Carpenter, Acting Administrator
6. Hawai’i Tourism Authority, Caroline Anderson, Interim President & CEO
7. Chipper Wichman
8. Hawai’i Wildlife Fund, Hannah Bernard, Executive Director
9. Kahakukahi, Zane Schweitzer, Executive Director
10. KUA Kau’āina Ulu ‘Auamo, Kevin Chang, Executive Director, Olan Leimomi Fisher, Kua’āina Advocate, Alex Connelly, E Alu Pū Coordinator
11. Lahaina Strong, Pā’ele Kiakona, Jordan Ruidas and Courtney Lazo
12. Makai Watch, Heidi Beltz, Honolua Makai Watch Coordinator
13. Marine Institute, Maui Ocean Center, Dustin Paradis, Executive Director
14. Sierra Club-Maui Group, Lucienne de Naie, Chairperson
15. Surfrider Foundation, Hanna Lilley, Hawai’i Regional Manager
16. The Hawai’i Association for Marine Education & Research, Dr. Mark Deakos, President & Chief Scientist
17. The Nature Conservancy, Marian Chau, Associate Director of Conservation

About Trust for Public Land: Trust for Public Land (“TPL”) is a non-profit land conservation organization, and our mission is to protect land for people, ensuring healthy, livable communities for generations to come. For 50 years, we’ve worked to protect over 79,000 acres and 56 special places across Hawai’i. Our Aloha ‘Āina Program protects lands that perpetuate Hawaiian culture and returns these lands to Native Hawaiian organizations for community and cultural stewardship. Our Sustainable Hawai’i Program conserves lands that support local food production, our forests and their native species, and clean water sources with the goal of improving Hawai’i’s self-sufficiency, and food security.

We are now humbly asking the Board of Land and Natural Resources to approve the Legacy Land Conservation Commission recommendation to protect and acquire these lands at Honolua Bay with the goal of returning this precious ‘āina to community-led cultural stewardship for generations to come.

Mahalo nui loa,



Alyse Takayesu Parker
Maui Project Manager
Trust for Public Land



**TRUST FOR
PUBLIC
LAND®**



Honolua Bay

Honolua Bay, in Maui Komohana (West Maui), is one of Hawai'i's cherished biocultural landscapes—rich in marine life, cultural sites, and generations of stewardship. After decades of advocacy, the north bank of Honolua Stream has been protected as a future State Park. Trust for Public Land (TPL) is now partnering with the Save Honolua Coalition (SHC) to protect the privately held lands along the south bank, bringing them into community-based stewardship. This project extends conservation across the bay and advances a co-management vision that restores cultural integrity and ecological resilience to Honolua Bay.

An Enduring Wahi Pana

Honolua Bay lies within Hono-a-Pi'ilani, one of the six sacred bays of Maui Komohana. For generations, it has been honored as a wahi pana (storied and sacred place) where extensive cultivation and the abundant bay supported a thriving community, with heiau (temples) and iwi kūpuna (ancestral burials) underscoring its ongoing spiritual importance.

Surfing has deep roots at Honolua, with traditional accounts of the ali'i, Kiha'a'pi'ilani, surfing its waves. Today, it remains an iconic break revered by surfers throughout Hawai'i and around the world. Honolua also holds a central place in the Hawaiian cultural renaissance: in 1976, the voyaging canoe Hōkūle'a launched from its shores, sparking the rebirth of traditional navigation.



A Shelter for Marine Life

In 1978, Honolua Bay was designated a Marine Life Conservation District and continues to shelter a vibrant coral reef, supporting abundant and diverse fish populations, and providing habitat for protected species, including spinner dolphins, reef manta rays, and green and hawksbill sea turtles.

Growing Impacts on a Beloved Bay

As one of Maui's most iconic and heavily visited coastal sites, Honolua faces increasing pressure from unmanaged visitor use. On peak days, up to 1,600 people visit the bay—about 1,200 by land and hundreds more by commercial boat. This has contributed to erosion, impacts to cultural sites, and declining reef health. Along the south bank, within the project lands, informal streamside trails channel visitors through sensitive riparian areas and cultural sites. In recent years, Honolua Bay has also experienced two damaging commercial vessel groundings. With no unified system to manage parking, access, or visitor conduct, the bay's cultural and natural resources absorb the impacts of overuse, while local families face overcrowding in a place central to community identity and practice.

Restoring Honolua, Together

Once acquired, TPL will transfer the south bank lands to the Save Honolua Coalition (SHC), the community-based nonprofit that has led efforts to protect Honolua for nearly two decades. Community stewardship of these lands will establish dedicated space for reconnection and strengthening pilina (relationships) with Honolua and a more respectful and educational visitor experience.

Building on the State's area management plans, SHC is developing Pu'uhonua o Honolua, a stewardship and visitor management framework rooted in cultural and ecological values. If protected, lands on the south bank will become a gathering place for community and cultural reconnection, hosting school groups, cultural practitioners, mālama 'āina workdays, and restoring experiences long diminished by overcrowding and heavy tourist traffic.

On State lands along the north bank—where visitor pressure is greatest—SHC will work with State Parks to implement a community-based co-management model that sets appropriate carrying capacity limits, improves parking, delineates access ways, and creates culturally grounded interpretive programming for visitors.

Together, these efforts will extend protection across the full bay—prioritizing cultural and community use on the south bank while ensuring that visitor activity on the north bank is managed to protect resources, reduce overcrowding, and uphold the cultural integrity of Honolua Bay.

Conservation Funding Plan

- \$2.02M State Legacy Land Conservation Program (*recommended, project ranked #1*)
- \$741K County of Maui (*pending*)
- TPL is also seeking private funding to support project and program-related expenses.

About Trust for Public Land

Since 1979, Trust for Public Land has conserved over 78,000 acres throughout Hawai'i. Through our land protection efforts we partner with local communities to safeguard the lands and resources that are special to them.



Connecting everyone to the outdoors™
tpl.org

FOR MORE INFORMATION:

Alyse Takayesu Parker
Project Manager
(808) 269-0449
alyse.parker@tpl.org

PHOTO CREDITS:
ERIK AEDER (front)
HOKULEA.COM (back)

CONSERVATION PARTNER:





Property parcels:
 (2) 4-2-001:044 (8.658 acres)
 (2) 4-2-004:032 (9.1 acres)
 (2) 4-1-001:019 (0.05 acres)

- Honolua Bay Property
- Honolua-Mokule'ia Marine Life Conservation District
- Existing trail
- State of Hawai'i
- Maui County park
- Honolua Valley Conservation Easement

Honolua Bay

ISLAND OF MAUI, HAWAII

November 3, 2025. Copyright © Trust for Public Land. Trust for Public Land and Trust for Public Land logo are federally registered marks of Trust for Public Land. Information on this map is provided for purposes of discussion and visualization only. www.tpl.org





Honolua Bay

ISLAND OF MAUI, HAWAII

November 20, 2025. Copyright © Trust for Public Land. Trust for Public Land and Trust for Public Land logo are federally registered marks of Trust for Public Land. Information on this map is provided for purposes of discussion and visualization only. www.tpl.org





The Senate Ka 'Aha Kenekoa

STATE CAPITOL
HONOLULU, HAWAII 96813

January 12, 2026

Chair Dawn Chang and Members
Board of Land and Natural Resources
Department of Land and Natural Resources
1151 Punchbowl Street, Room 130
Honolulu, Hawai'i 96813

RE: HONOLUA BAY

Aloha e Chair Chang and Board Members:

As the State Senator for the Sixth Senatorial District of Hawai'i, which includes West Maui, I am writing to express my strong support for Save Honolua Coalition and Trust for Public Land's effort to purchase and protect lands at Honolua Bay (17.8 acres, TMKs (2) 4-2-004-032, (2) 4-2-001-044, (2) 4-1-001-019) in the ahupua'a o Honolua, moku o Kā'anapali, on the island of Maui.

Honolua Bay is beloved the Maui community. It is a culturally important space with iwi kūpuna, sacred sites, and living cultural practices which connect generational families to their kūpuna. It is one of the world's premier surf breaks, passionately protected by surfers. It is cherished by residents as one of the last undeveloped coastal landscapes after miles of resort development. A place where cultural connection and sense of place endure.

For visitors, it offers an iconic experience of Hawai'i's natural beauty. In 2014, after years of advocacy by the Save Honolua Coalition and the community, the State acquired 244 acres to the north of Honolua stream, protecting the land from development in perpetuity. However, lands within the bay, to the south of Honolua stream, remain privately owned. Acquiring these lands would allow the community and Save Honolua Coalition to coordinate conservation of the full riparian corridor. This area is suffering from unmanaged visitation, desecration of cultural sites, and reef damage from runoff, overuse, and boat groundings. Through its 18 years of advocacy, Save Honolua Coalition has led efforts to develop management and conservation plans that envision community-based co-management of Honolua—where access is managed, the bay is peaceful and resilient, and residents and visitors alike can honor its profound cultural and ecological importance.

Senator Angus L. K. McKelvey
Senate District 6 – West Maui, Mā'alaea, Waikapū, South Maui
415 South Beretania St., Room 223
Honolulu, Hawaii • 96813
Phone: (808) 586-6070 • Email: senmckelvey@capitol.hawaii.gov

For these reasons, I respectfully urge the Board to approve this project. Please feel free to contact my office with any questions or concerns at (808) 586-6070 or via email at SenMcKelvey@capitol.hawaii.gov.

Sincerely,

Angus L.K. McKelvey
Hawaii State Senator



HOUSE OF REPRESENTATIVES

Hale o nā Luna Makaʻāinana

STATE OF HAWAII
STATE CAPITOL, ROOM 315
415 SOUTH BERETANIA STREET
HONOLULU, HAWAII 96813

January 12, 2026

Via Email: alyse.parker@tpl.org
Trust for Public Land
1164 Bishop Street, Suite 1512
Honolulu, Hawai'i 96813

Via Email: savehonolua@gmail.com
Save Honolua Coalition

Re: Support for the protection and purchase of lands at Honolua Bay

To Whom It May Concern,

As the State Representative for House District 14 in which Honolua Bay is located, and as the founder of the Save Honolua Coalition two decades ago, and as a Honolua Valley resident for over three decades married to a resident who has lived there for over half a century, I support the Save Honolua Coalition and Trust for Public Land's effort to purchase and protect lands at Honolua Bay (17.8 acres, TMKs (2) 4-2-004-032, (2) 4-2-001-044, (2) 4-1-001-019) in the ahupua'a o Honolua, moku o Kā'anapali, on the island of Maui.

In 2006 Maui Land and Pineapple Co. presented maps to the surfers (I was one of the surfers living in Honolua Valley) with the promise of a Linear Park along the cliff with showers, bathrooms, new road, barbecue picnic area, benches, etc. After a closer look at the maps, I detected schemes for an 18-hole private golf course and a 45 luxury home gated community. Once I realized this, I had to educate the community (first running this by my neighbor John Carty and then former County Councilmember Wayne Nishiki) to see if they agreed with this development -- and they did not. Save Honolua Coalition (SHC) was born. Through 18 years of advocacy, SHC has led efforts to develop management and conservation plans that seek community-based co-management of Honolua—where access is managed, the bay is kept peaceful, fostering resilience, and residents and visitors alike can honor and benefit from its profound cultural and ecological importance.

With the Bay's overuse and being "loved to death" by visitors, my sincere hope is that the proposed parcel gets purchased for protection of the Bay and that future plans include: a comprehensive management plan for Lipoa Point by the State; reinstatement of the Makai Watch program, which would be beneficial with instant direct positive outcome to the Bay; education to visitors on the proper use and respect while visiting the bay; and management mauka to makai in its entirety as what happens mauka flows makai.

Yes, Honolua is a very special place for us in the Maui community! Honolua is a wahi pana where iwi kupuna, sacred sites, and living cultural practices connect generational families to their kūpuna. It is one of the world's premier surf breaks, passionately protected by surfers. It is cherished by residents as one of the last undeveloped coastal landscapes after miles of resort development—a place where cultural connection and sense of place endure. For visitors, it offers an iconic experience of Hawai'i's natural beauty. In 2014, after years of advocacy by the Save Honolua Coalition and the community, the State acquired 244 acres to the north of Honolua stream, protecting the land from development in perpetuity. But lands within the bay, to the south of Honolua stream, remain privately owned. Acquiring these lands would allow the community and SHC to coordinate conservation of the full riparian corridor, an area suffering from unmanaged visitation, desecration of cultural sites, and reef damage from runoff, overuse, and boat groundings.

I sincerely hope that this cultural and ecological jewel will be protected and preserved for generations, and the threat of over-development will be contained.

Mahalo nui,

A handwritten signature in cursive script that reads "Elle Cochran".

Elle Cochran

RICHARD T. BISSEN, JR.
Mayor

JOSIAH K. NISHITA
Managing Director

ERIN A. WADE
Deputy Managing Director



DEPARTMENT OF MANAGEMENT
COUNTY OF MAUI
200 SOUTH HIGH STREET
WAILUKU, MAUI, HAWAII 96793
www.mauicounty.gov

December 30, 2025

LEGACY LAND CONSERVATION PROGRAM
DEPARTMENT OF LAND AND NATURAL RESOURCES
1151 PUNCHBOWL STREET, ROOM 325
HONOLULU, HAWAII 96813
ATTN: DAVID PENN, PROGRAM SPECIALIST
david.penn@hawaii.gov

Dear Mr. Penn,

SUBJECT: SAVE HONOLUA COALITION APPLICATION
TMKs: (2) 4-1-001:006, 019 & 4-2-001:004 AND 4-2-004:032

The County of Maui acknowledges the Trust for Public Land and Save Honolua Coalition application to the State Legacy Lands Conservation Fund to purchase 3 parcels totaling approximately 17.8 acres located in Kā'anapali, Honolua, Maui, County of Maui, State of Hawai'i, Tax Map Key numbers (2) 4-1-001:006, 019 & 4-2-001:004 AND 4-2-004:032 ("Property").

The County of Maui is willing to accept the conveyance of the conservation easement and allocate matching funds from the FY27 Open Space Fund, contingent upon council approval.

Sincerely,

A handwritten signature in black ink that reads "Richard T. Bissen, Jr.".

Richard T. Bissen, Jr.
Mayor, County of Maui

cc: Trust for Public Land, Alyse Parker

JOSH GREEN, M.D.
GOVERNOR | KE KIA'ĀINA

SYLVIA LUKE
LIEUTENANT GOVERNOR | KA HOPE KIA'ĀINA



STATE OF HAWAII | KA MOKU'ĀINA 'O HAWAII
DEPARTMENT OF LAND AND NATURAL RESOURCES
KA 'OIHANA KUMUWAIWAI 'ĀINA

DIVISION OF STATE PARKS
P.O. BOX 621
HONOLULU, HAWAII 96809
January 12, 2026

DAWN N.S. CHANG
CHAIRPERSON
BOARD OF LAND AND NATURAL RESOURCES
COMMISSION ON WATER RESOURCE
MANAGEMENT

RYAN K.P. KANAKA'OLE
FIRST DEPUTY

CIARA W.K. KAHAHANE
DEPUTY DIRECTOR - WATER

AQUATIC RESOURCES
BOATING AND OCEAN RECREATION
BUREAU OF CONVEYANCES
COMMISSION ON WATER RESOURCE
MANAGEMENT
CONSERVATION AND COASTAL LANDS
CONSERVATION AND RESOURCES
ENFORCEMENT
ENGINEERING
FORESTRY AND WILDLIFE
HISTORIC PRESERVATION
KAHOOLAWE ISLAND RESERVE COMMISSION
LAND
STATE PARKS

Via Email: savehonolua@gmail.com
Save Honolua Coalition

Via Email: alyse.parker@tpl.org
Trust for Public Land
1164 Bishop Street, Suite 1512
Honolulu, Hawaii'i 96813

Re: Support for the protection and purchase of lands at Honolua Bay

To Whom it May Concern,

We at the Department of Land and Resources, Division of State Parks strongly support the Save Honolua Coalition and Trust for Public Land's effort to purchase and protect lands at Honolua Bay (17.8 acres, TMKs (2) 4-2-004-032, (2) 4-2-001-044, (2) 4-1-001-019) in the ahupua'a o Honolua, moku o Kā'anapali, on the island of Maui.

Honolua is a place beloved by many in the Maui community. It is a wahi pana where iwi kupuna, sacred sites, and living cultural practices connect generational families to their kūpuna. It is one of the world's premier surf breaks, passionately protected by surfers. It is cherished by residents as one of the last undeveloped coastal landscapes after miles of resort development—a place where cultural connection and sense of place endure. For visitors, it offers an iconic experience immersed in Hawai'i's natural beauty. In 2014, after years of advocacy by the Save Honolua Coalition (SHC) and the community, the State acquired 244 acres to the north of Honolua stream, protecting the land from development in perpetuity. But lands within the bay, to the south of Honolua stream, remain privately owned. Acquiring these lands would allow the community and SHC to coordinate conservation of the full riparian corridor, an area suffering from unmanaged visitation, desecration of cultural sites, and reef damage from runoff, overuse, and boat groundings. Through 18 years of advocacy, SHC has led efforts to develop management and conservation plans that envision community-based co-management of Honolua—where access is managed, the bay is peaceful and resilient, and residents and visitors alike can honor its profound cultural and ecological importance.

Hawai'i State Parks has been engaged along with other DLNR Divisions in acquisition and planning for the State-acquired Honolua/Lipoa lands, with the intent of taking management responsibility of a portion. Our intent would be to work on a co-management agreement similar

to the lauded Hā'ena State Park, Kaua'i model for community-based stewardship, which has been so successful at protecting resources and invigorating the local economy.

We look forward to supporting this effort in partnership with TPL and the Save Honolulu Coalition. Mahalo,



ALAN B. CARPENTER
Acting Administrator



January 13, 2026

VIA EMAIL: savehonolua@gmail.com

Re: Purchase of Lands at Honolua Bay

To Whom it May Concern,

The Hawai'i Tourism Authority (HTA) acknowledges the efforts of the Save Honolua Coalition and Trust for Public Land related to the proposed acquisition and long-term protection of lands at Honolua Bay (17.8 acres, TMKs (2) 4-2-004-032, (2) 4-2-001-044, and (2) 4-1-001-019), located within the ahupua'a o Honolua, moku o Kā'anapali, on the island of Maui.

The HTA's mission is to strategically manage tourism in a manner that balances economic, social, cultural, and environmental considerations, with the intent of optimizing benefits for Hawai'i residents while mitigating impacts on communities and natural resources. HTA's work is guided by destination management principles that emphasize stewardship, community engagement, and care for place.

John Carty, Vice President and Co-founder of Save Honolua Coalition, is a member and active contributor to the Hawai'i Tourism Authority's Maui Destination Management Action Plan (DMAP) Advisory Group, which is engaged in the development of the next Maui DMAP spanning the years 2026–2029. Through this ongoing engagement, the HTA is familiar with the cultural, environmental, and visitation-related challenges associated with Honolua Bay and recognizes the importance of efforts that further stewardship of the land and mitigate impacts in this highly valued area. We are aware that Save Honolua Coalition has developed planning concepts for the Honolua area focused on long-term care, community involvement, and resource management.

If the 17.8 acres referenced above within Honolua Bay are transferred from Maui Land and Pine to the Save Honolua Coalition, such an outcome could present potential benefits for the surrounding community, the visitor experience, and the State through a more comprehensive and coordinated approach led by the Save Honolua Coalition in collaboration with State partners. Additionally, there is an understanding that, when the unencumbered parcel on the north side of Honolua Bay be transitioned from the DLNR Land Division into the State Parks system, there is meaningful potential for a collaborative relationship between the Save Honolua Coalition and State Parks, similar to the community-based management model established at Hā'ena State Park on Kaua'i. Acquisition of these lands would create an opportunity to consider management of the full riparian corridor as a connected system—an area that has experienced ongoing challenges related to unmanaged visitation, impacts to cultural sites, and marine resource degradation associated with runoff, overuse, and vessel groundings. Over nearly two decades, the Save Honolua Coalition has participated in the development of management and conservation

January 13, 2026
Page 2

concepts that emphasize community involvement, mālama ‘āina practices, and thoughtful stewardship, with the intent of maintaining Honolulu as a place of cultural, ecological, and community significance for future generations.

Mahalo,

A handwritten signature in black ink, appearing to read 'Caroline Anderson', with a stylized, cursive script.

Caroline Anderson
Interim President & Chief Executive Officer

CHIPPER WICHMAN
PO Box 753
Hanalei, HI 96741
Email: chipperwichman@gmail.com

12 January 2026

Save Honolua Coalition - VIA EMAIL TO: savehonolua@gmail.com

Trust for Public Land - VIA EMAIL TO: alyse.parker@tpl.org
1164 Bishop Street, Suite 1512
Honolulu, Hawai'i 96813

Subject: Support for the protection and purchase of lands at Honolua Bay

To Whom it May Concern,

On behalf of myself, Chipper Wichman, I strongly support the Save Honolua Coalition and Trust for Public Land's effort to purchase and protect lands at Honolua Bay (17.8 acres, TMKs (2) 4-2-004-032, (2) 4-2-001-044, (2) 4-1-001-019) in the ahupua'a o Honolua, moku o Kā'anapali, on the island of Maui. Over the past year I have been involved with this project through virtual zoom meetings with Save Honolua Coalition and the Trust for Public Lands and I have also discussed it with State Parks leadership on several occasions. I am also very familiar with the location as I was an avid surfer at Honolua Bay in the 1970s and 1980s and caught some of the best waves of my life there!

Honolua is a place beloved by many in the Maui community and throughout our pae 'āina. It is a wahi pana where iwi kupuna, sacred sites, and living cultural practices connect generational families to their kūpuna. It is one of the world's premier surf breaks, passionately protected by surfers. It is cherished by residents as one of the last undeveloped coastal landscapes after miles of resort development—a place where cultural connection and sense of place endure. For visitors, it offers an iconic experience of Hawai'i's natural beauty. In 2014, after years of advocacy by the Save Honolua Coalition (SHC) and the community, the State acquired 244 acres to the north of Honolua stream, protecting the land from development in perpetuity. But lands within the bay, to the south of Honolua stream, remain privately owned. Acquiring these lands would allow the community and SHC to coordinate conservation of the full riparian corridor, an area suffering from unmanaged visitation, desecration of cultural sites, and reef damage from runoff, overuse, and boat groundings. Through 18 years of advocacy, SHC has led efforts to develop management and conservation plans that envision community-based co-management of Honolua—where access is managed, the bay is peaceful and resilient, and residents and visitors alike can honor its profound cultural and ecological importance.

As a bit of background on myself, I worked at the National Tropical Botanical Garden for 47 years including 20 years as the President and CEO. I retired in 2023 and now serve on the Board of Trustees. NTBG is a nonprofit organization headquartered on Kaua'i with botanical gardens on and preserves across the State. The 1000-acre Limahuli Garden located on the north shore of Kaua'i was gifted in the 1970s to NTBG by my tutu in an effort to protect this wahi pana for future generations. As a result, our ohana is very familiar with what it takes to preserve our special places!

I am also one of the five community leaders who in 1998, founded Hui Maka'āinana o Makana to mālama Hā'ena State Park. I currently serve as the Vice President of the Hui's Board. The

Letter of Support for the protection and purchase of lands at Honolua Bay
Chipper Wichman
12 January 2026
Page 2

Hui is governed by the lineal descendants of our traditional families from Hā'ena, Kauai and we have been working with State Parks for the past 25 years to steward and manage Hā'ena State Park. Over the past 5 years we have reduced the visitor numbers coming into to the Park to a sustainable level and in the process have created one of the best examples of regenerative tourism in our State.

I am very supportive of the effort to protect Honolua for many reasons but most importantly if we do not protect this area now it will eventually become part of the over development taking place on west Maui. The visitor industry development there has already crept right up to the doorstep of Honolua and the impact of over use by visitors has overwhelmed Honolua for years due to unmanaged visitor use – much like we experienced in Hā'ena prior to the implementation of the Hā'ena State Park Master Plan and the Hui's implementation of a Access Management System which reduced visitor numbers for 5,000-6,000 per day down to 600 per day!

Current observations at Honolua indicate that on peak days, up to 1,600 people visit the bay—about 1,200 by land and hundreds more by commercial boat. This has contributed to erosion, impacts to cultural sites, and declining reef health. Along the south bank, within the project lands, informal streamside trails channel visitors through sensitive riparian areas and cultural sites. In recent years, Honolua Bay has also experienced two damaging commercial vessel groundings. With no unified system to manage parking, access, or visitor conduct, the bay's cultural and natural resources absorb the impacts of overuse, while local families face overcrowding in a place central to community identity and practice.

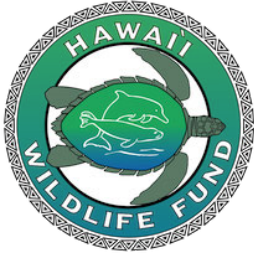
To allow this unmanaged desecration of this wahi pana in not only irresponsible, it is shameful! We fully support the empowerment of the local community who is stepping forward to help protect and manage Honolua. A partnership between the community and the State is a powerful way to protect our special places – we know that from our experience in Hā'ena. The Save Honolua Coalition (SHC) has a proven commitment and a beautiful vision for future management. Building on the State's area management plans, SHC envisions creating **“Pu'uhonua o Honolua”**, a stewardship and visitor management framework rooted in cultural and ecological values. If this area can be protected, SHC believes that lands on the south bank will become a gathering place for community and cultural reconnection, hosting school groups, cultural practitioners, mālama 'āina workdays, and restoring experiences long diminished by overcrowding and heavy tourist traffic.

Finally, the Trust for Public Lands (TPL) is such an amazing organization that has worked tirelessly to protect countless special places across the State. With their expertise supporting this effort we can be assured that the use of any public funds will be for the benefit of our community and the protect of this priceless place we call Honolua.

Mahalo for allowing me to share my thoughts about the effort underway to protect Honolua for future generations!

O wau,

Chipper Wichman
President Emeritus, National Tropical Botanical Garden
Vice President, Hui Maka'āinana o Makana



January 13 2026

VIA EMAIL: hannah@wildhawaii.org
Hawai'i Wildlife Fund

To: Alyse Parker via email alyse.parker@tpl.org
Trust for Public Land
1164 Bishop St., Suite 1512
Honolulu, HI. 96813

Re: Support for the protection and purchase of lands at Honolua Bay

To Whom it May Concern:

Aloha. As Director and co-founder of Hawai'i Wildlife Fund and the Hawai'i Wildlife Discovery Center in Kā'anapali, I am writing to wholeheartedly endorse the purchase of lands at Honolua Bay by the Save Honolua Coalition and Trust for Public Land (17.8 acres, TMKs (2) 4-2-004-032, (2) 4-2-001-044, (2) 4-1-001-019 in the 'ahupua'a o Honolua, moku o Kā'anapali, island of Maui).

Honolua Bay is one of Maui's most renowned places, holding significant cultural sites including but not limited to heiau, burials, house platforms and agricultural terraces, hosting the launching of the wa'a kaulua Hōkūle'a – leading to the rebirth of the Hawaiian Cultural Renaissance in 1976, receiving designation as Hawai'i's first Marine Life Conservation District in 1978, and recognition as one of the world's premier surfing and marine recreation sites. But more than that, Honolua Bay is a deeply beloved place by community and visitors alike. For many who visit Honolua Bay, there exists a palpable reverence for the Bay no doubt connected to the fact that it is a wahi pana where iwi kūpuna, sacred sites, and living cultural practices connect lineal descendants to their kūpuna. It is cherished by residents as one of the last undeveloped coastal landscapes after miles of resort development—a place where cultural connection and sense of place endure. For visitors and residents alike, it offers an iconic experience of Hawai'i's natural beauty.

In 2014, after years of advocacy by the Save Honolua Coalition (SHC) and the community, the State acquired 244 acres to the north of Honolua stream, protecting the land from development in perpetuity. But lands within the bay, to the south of Honolua stream, remain privately owned. Acquiring these lands would allow the community and SHC to coordinate conservation of the full riparian corridor, an area suffering from unmanaged visitation, desecration of cultural sites, and reef damage from runoff, overuse, and boat groundings. Through 18 years of advocacy, SHC has led efforts to develop management and conservation plans that envision community-based co-management of Honolua—where access is managed, the bay is peaceful and resilient, and residents and visitors alike can honor its profound cultural and ecological importance.

Hawai'i Wildlife Fund is a 501©3 nonprofit organization dedicated to the conservation of Hawai'i's native marine life through research, education and habitat restoration, founded in 1996 by two former National Marine Fisheries Service scientists, myself and Bill Gilmartin. We have headquarters on Hawai'i Island and Maui and are powered by our communities and volunteers to recover the thriving health of our nearshore ecosystems and protected wildlife. We have been involved in the community-driven efforts to protect Honolua Bay since the inception of the Save Honolua Coalition in 2006, providing support for outreach and education and the management planning process. I have snorkeled and dove the Bay since 1990 and personally witnessed the decline of the coral reef inside the Bay. Despite its designation as an MLCD since 1978, threats to the Bay continue through human impacts, and the coral reef ecosystem of Honolua Bay is in decline. We strongly believe that the continued efforts of our community to engage in better management practices and purchase of the nearby lands to enable community-based management practices as articulated by the Save Honolua Coalition are essential.

On behalf of Hawai'i Wildlife Fund and the Hawai'i Wildlife Discovery Center, I wholeheartedly endorse the purchase of these lands by the Save Honolua Coalition and Trust for Public Land in order to continue the community-led efforts to better manage and protect the Bay.

Mahalo for your consideration and continued progress in protecting our environment,



Hannah Bernard
Executive Director
Hawai'i Wildlife Fund
Hawai'i Wildlife Discovery Center



January 13, 2026

Letter of Support x Save Honolua Coalition

Aloha,

My name is Zane Kekoa Schweitzer, and I am writing this letter in strong support of the Save Honolua Coalition, both personally and on behalf of Kahākūkahi Ocean Academy.

I was born and raised in West Maui, spending much of my life in and around Honolua Bay. From a young age, Honolua has been a place of learning, connection, and inspiration for me- not only as an ocean athlete, but as a community member rooted in this 'āina.

Over the years, I have witnessed firsthand the unwavering commitment of the Save Honolua Coalition to protect, steward, and advocate for this special place with integrity, humility, and perseverance. Community leaders within the coalition have long inspired me through their actions. Their dedication to Honolua, often carried quietly and over many years, has set a powerful example of what true guardianship looks like. Growing up on Maui, seeing that level of care and responsibility toward our environment helped shape my own values and commitment to give back.

Today, as the Founder and Executive Director of Kahākūkahi Ocean Academy, I am grateful to work alongside Save Honolua as a trusted partner. Our missions are deeply aligned- protecting Honolua not only for today, but for future generations, while ensuring that cultural practices, community access, and environmental health remain central to its care. Kahākūkahi's work with youth, mental health, and ocean education is strengthened by the foundation of stewardship that Save Honolua has helped establish over decades.

I proudly support the continued efforts of the Save Honolua Coalition and stand behind their leadership, vision, and long-term commitment to Honolua Bay and the surrounding watershed. Their work is vital, necessary, and deserving of continued support.

Mahalo nui loa for the many years of dedication, sacrifice, and aloha given in service of Honolua and our community.

With respect and gratitude,
Zane Kekoa Schweitzer

Founder & Executive Director
Kahākūkahi Ocean Academy
West Maui, Hawaii



January 13, 2026

ATTN: Save Honolua Coalition
Via Email: savehonolua@gmail.com

Alyse Parker
Trust for Public Land
1164 Bishop Street, Suite 1512
Honolulu, Hawai'i 96813
Via Email: alyse.parker@tpl.org

SUBJECT: Letter of Support for the Protection and Purchase of Lands at Honolua Bay

Aloha mai kākou,

Kua'āina Ulu 'Auamo (KUA) sends this letter in strong support of the Save Honolua Coalition and Trust for Public Land's effort to purchase and protect lands at Honolua Bay (17.8 acres, TMKs (2) 4-2-004-032, (2) 4-2-001-044, (2) 4-1-001-019) in the ahupua'a o Honolua, moku o Kā'anapali, on the island of Maui.

[Kua'āina Ulu 'Auamo](#) (also known as KUA) means “grassroots growing through shared responsibility,” and we serve as a facilitator, consultant, trainer, liaison, and tool-builder for grassroots community stewardship efforts. We work to increase our communities' resiliency, adaptation, and transformation through community-based biocultural resource management, currently supporting three major networks of: (1) over 40 mālama 'āina (caring for our 'āina or “that which feeds”) community groups collectively referred to as E Alu Pū (moving forward together); (2) over 60 loko i'a (fishpond aquaculture systems unique to Hawai'i) and wai 'ōpae (anchialine pool systems) sites in varying stages of restoration and development, with numerous caretakers, stakeholders, and volunteers known as the Hui Mālama Loko I'a (“caretakers of fishponds”); and (3) the Limu Hui made up of over 50 loea (traditional experts) and practitioners in all things “limu” or locally-grown “seaweed.” Our shared nu'ukia (vision) is to once again experience what our kūpuna (ancestors) referred to as 'ĀINA MOMONA – abundant and healthy ecological systems that sustain our communities' resilience and well-being.

The SHC is a cherished member of the E Alu Pū Network. SHC involvement in E Alu Pū preceded the development of KUA as a network facilitator in 2012. More recently, in 2014, KUA supported a portion of SHC's planning efforts which contributed to the trajectory of the project before you today. SHC's leadership in Honolua is place-based with a recognition that what happens in each of our places can resonate positively across the state. Their efforts and the lessons learned in getting to this point are an inspiration for many others across our state. This was clearly evident when they shared their vision and co-hosted E Alu Pū's annual gathering in 2019.

Honolua is a place beloved by many in the Maui community, including those in our KUA networks. It is a wahi pana where iwi kupuna, sacred sites, and living cultural practices connect generational families to their kūpuna. It is one of the world's premier surf breaks and cherished by Maui residents as one of the last undeveloped coastal landscapes after miles of resort



development—a place where cultural connection and sense of place endure. For visitors, it offers an iconic experience of Hawai'i's natural beauty. In 2014, after years of advocacy by SHC and the community, the State acquired 244 acres to the north of Honolua stream, protecting the land from development in perpetuity. But lands within the bay, to the south of Honolua stream, remain privately owned. Acquiring these lands would allow the community and SHC to coordinate conservation of the full riparian corridor, an area suffering from unmanaged visitation, desecration of cultural sites, and reef damage from runoff, overuse, and boat groundings. Through 18 years of advocacy, SHC has led efforts to develop management and conservation plans that envision community-based co-management of Honolua—where access is managed, the bay is peaceful and resilient, and residents and visitors alike can honor its profound cultural and ecological importance.

Please support the efforts of the Save Honolua Coalition and the community to purchase and protect these parcels at Honolua Bay for future generations to come.

'O ke aloha 'āina nō no nā kau ā kau, mau ā mau,

Kevin K.J. Chang
Executive Director

Olan Leimomi Fisher
Kua'āina Advocate

Alex Connelly
E Alu Pū Coordinator



1/12/2026

Officiallahainastrong@gmail.com
Lahaina Strong

To: alyse.parker@tpl.org
Trust for Public Land
1164 Bishop Street, Suite 1512
Honolulu, Hawai'i 96813

Re: Support for the protection and purchase of lands at Honolua Bay

To Whom it May Concern,

Lahaina Strong strongly supports the Save Honolua Coalition and Trust for Public Land's effort to purchase and permanently protect lands at Honolua Bay (17.8 acres, TMKs (2) 4-2-004-032, (2) 4-2-001-044, (2) 4-1-001-019) in the ahupua'a o Honolua, moku o Kā'anapali, on the island of Maui.

Lahaina Strong, a grassroots movement born out of the devastation of the August 8th fires and rooted in the long-standing struggle for housing, water justice, and mālama 'āina in West Maui. Lahaina Strong has partnered with the Save Honolua Coalition on various different actions and events and value our relationship greatly.

Honolua is a place deeply loved by our Maui community. It is a wahi pana where iwi kūpuna, sacred sites, and living cultural practices continue to connect generational families to their ancestors. It is one of the world's premier surf breaks, fiercely protected by surfers and cultural practitioners alike. For residents, Honolua represents one of the last largely undeveloped coastal places after miles of resort development—a rare landscape where cultural connection

and a strong sense of place still endure. For visitors, it offers an opportunity to experience Hawai'i's natural beauty in a way that calls for respect and responsibility.

In 2014, after years of dedicated advocacy by the Save Honolua Coalition and community members, the State acquired 244 acres north of Honolua Stream, ensuring those lands would be protected in perpetuity. However, the lands within Honolua Bay, south of the stream, remain privately owned. Acquiring these parcels is critical to protecting the full riparian corridor and addressing ongoing challenges such as unmanaged visitation, damage to cultural sites, and harm to nearshore reefs from runoff, overuse, and boat groundings.

For over 18 years, the Save Honolua Coalition has led community-driven efforts to envision and advance thoughtful management and conservation of Honolua Bay.

Their work centers community-based co-management—where access is responsibly managed, cultural sites are respected, ecosystems are restored, and the bay remains peaceful, resilient, and protected for future generations.

Lahaina Strong's mission is rooted in advocating for the protection of our people, place, and future—particularly in the wake of immense loss and ongoing recovery following the Lahaina wildfire. We know that true resilience comes from caring for our 'āina, honoring cultural stewardship, and supporting community-led solutions that safeguard Maui's remaining natural and cultural resources.

Protecting Honolua Bay aligns deeply with these values, and we stand in strong solidarity with the Save Honolua Coalition's efforts to ensure this sacred place is preserved for generations to come.

Mahalo Nui,

Lahaina Strong

Pā'ele Kiakona
Jordan Ruidas
Courtney Lazo



Aloha,

On behalf of Makai Watch, I am writing in strong support of Trust for Public Land's potential acquisition of a parcel currently owned by Maui Land & Pineapple for long-term conservation and co-management with the State of Hawai'i.

Honolua Bay is a Marine Life Conservation District of exceptional ecological, cultural, and community value, and one of the most heavily visited coastal areas on Maui. While the bay carries important legal protections, the makai side of Honolua is often a blind spot for active management and enforcement by the Department of Land and Natural Resources (DLNR) due to staffing and resource constraints. Community-based stewardship and monitoring are therefore essential to protecting this place.

The Makai Watch program at Honolua Bay has deep roots. It began in the early 2000s as a community driven, well organized effort grounded in care for place and shared responsibility. The current iteration of our Makai Watch program was intended to launch in 2023, but the Lahaina wildfire delayed our efforts. In January of 2024, we officially restarted the program, and since then it has grown beyond what I could have imagined.

As the Makai Watch Coordinator for Save Honolua Coalition, I have learned firsthand how critical a trained, consistent presence on the ground is for the health of Honolua Bay. Our program is formally trained by DLNR and serves as a trusted community-based management partner, acting as the eyes and ears of the area while supporting state agencies through education, monitoring, and stewardship.

Since early 2024, the program has expanded rapidly. With support from the community, DLNR, The Nature Conservancy, Hawai'i Community Foundation, and visitors alike, we have built a strong and effective presence at the bay. We now have fish identification cards, books, and educational outreach materials, and have conducted hundreds of educational interventions with visitors, helping people better understand reef etiquette, marine life, and their kuleana while in the water.

As our work has matured, we have also learned how to ask better questions and collect better information, particularly around boating activity and violations. Through this process, we have identified inconsistencies and communication gaps within DLNR related to enforcement, reporting, and management of this precious MLCD. While these realities can be difficult to witness, they underscore the importance of having an organized, reliable community partner on the ground.

I am incredibly proud of how much the program has grown. We now have three employees, a growing network of volunteers, and regularly host school groups who visit Honolua Bay to learn about marine stewardship and Makai Watch. This spring, Kamehameha Schools will also be bringing students to the bay to learn about our work. Our team members are trained naturalists who are deeply committed to education, monitoring, and caring for this place.

In addition to my role with Makai Watch, I volunteer with the Surfrider Foundation, conducting monthly enterococcus water quality testing at Honolua Bay. I am also training with Kuleana Coral Restoration to become a scientific diver, with the goal of better understanding coral reef health at the bay and identifying meaningful ways we can contribute to reef protection and recovery. I have organized multiple large-scale stewardship efforts, including two major planting events with Aloha Pu'u Kukui. On November 8, 2025, we planted 1,000 native plants to help stabilize the land and protect the bay. I have also organized beach cleanups and invasive plant removal events to further support the health of the ahupua'a.

Despite these efforts, it is deeply troubling to see how this sacred place is being treated. There have been two boat groundings in recent years, including one just last year. Too often, it feels as though the title of "Marine Life Conservation District" is being used as a marketing tool rather than honored through consistent protection and care.

My goal for the Makai Watch program, especially if supported through Trust for Public Land's acquisition and long term conservation of this parcel, is to strengthen stewardship for Honolua Bay while creating meaningful conservation jobs for Hawaiians and local residents, particularly youth. Protecting land and empowering people must go hand in hand if we want conservation to succeed over the long term.

Securing this parcel through Trust for Public Land presents a rare opportunity to align land ownership, conservation, and management in a way that reflects how Honolua truly functions as an ahupua'a system. Co-management with the State, supported by an established, DLNR trained community partner, would ensure that stewardship, monitoring, and education are embedded into the long-term future of this place.

Trust for Public Land is uniquely positioned to help make this vision possible. Protecting this land will not only safeguard critical coastal and marine resources, but also strengthen a proven community program dedicated to caring for Honolua Bay for generations to come.

Mahalo nui loa for your consideration and for your continued leadership in protecting Hawai'i's most treasured places.

My best,

Heidi Beltz
Makai Watch Coordinator
Save Honolua Coalition

To Whom it May Concern,

The Maui Ocean Center Marine Institute (MOCMI) strongly supports the Save Honolua Coalition and Trust for Public Land's effort to purchase and protect lands at Honolua Bay (17.8 acres, TMKs (2) 4-2-004-032, (2) 4-2-001-044, (2) 4-1-001-019) in the ahupua'a o Honolua, moku o Kā'anapali, on the island of Maui.

Honolua is a place beloved by many in the Maui community. It is a wahi pana where iwi kupuna, sacred sites, and living cultural practices connect generational families to their kūpuna. It is one of the world's premier surf breaks, passionately protected by surfers. It is cherished by residents as one of the last undeveloped coastal landscapes after miles of resort development—a place where cultural connection and sense of place endure. For visitors, it offers an iconic experience of Hawai'i's natural beauty. In 2014, after years of advocacy by the Save Honolua Coalition (SHC) and the community, the State acquired 244 acres to the north of Honolua stream, protecting the land from development in perpetuity. But lands within the bay, to the south of Honolua stream, remain privately owned. Acquiring these lands would allow the community and SHC to coordinate conservation of the full riparian corridor, an area suffering from unmanaged visitation, desecration of cultural sites, and reef damage from runoff, overuse, and boat groundings. Through 18 years of advocacy, SHC has led efforts to develop management and conservation plans that envision community-based co-management of Honolua—where access is managed, the bay is peaceful and resilient, and residents and visitors alike can honor its profound cultural and ecological importance.

MOCMI's mission is to inspiring lifelong environmental stewardship and ensure the survival of sea turtles, Hawaiian monk seals, and coral reefs in Hawaii through science based conservation initiatives, education, and outreach. The protection of Honolua Bay closely aligns with MOCMI's mission; we have disentangled numerous sea turtles in Honolua, we monitor monk seals that haul out on its shores, and have conducted active coral restoration in Honolua in response to vessel groundings since 2023. We view our work at Honolua as a service to the Bay and the community that calls it home.

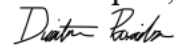
On a personal level, Honolua holds many precious memories; it is the first place I witnessed surfing with such awe, the first place I experienced being barreled surfing, the first place I swam with dolphins, the first place I was circled by sharks, and a place I find reprieve from the world and be fully present.

If these properties are not appropriately managed, we fear that Honolua will continue its path of degradation, abuse, and slip into the scrapbook of, "remember when Honolua used to be..." We have seen this time and time again in Hawai'i and its time we allow communities to manage their space as they see fit.

We envision Honolua Bay being a place where the community can come to connect with the rich culture of West Maui and enjoy the offerings the Bay provides while actively working towards a thriving mauka to makai ecosystem- healthy coral reefs teeming with fish, clear flowing wai surrounded by native forest, the songs of native birds, sights of basking turtles and seals, spinner dolphins jumping in the distance, and clean peeling blue waves with light offshore trades- all surrounded by people working together to protect our resources.

We strongly urge all parties to direct any leverageable support to this effort to aid in the preservation of Honolua.

Mahalo piha,



Dustin Paradis

Executive Director, The Marine Institute at The Maui Ocean Center

192 Ma'alaea Rd, Wailuku, HI 96793

dustin@mocmarineinstitute.org, 808-830-1536



SIERRA CLUB OF HAWAII
MAUI GROUP

January 11, 2026

VIA EMAIL: savehonolua@gmail.com Save Honolua Coalition

VIA EMAIL: alyse.parker@tpl.org

Trust for Public Land

1164 Bishop Street, Suite 1512 Honolulu, Hawaii 96813

Re: Support for the protection and purchase of lands at Honolua Bay

To Whom it May Concern,

Sierra Club Maui Group strongly supports the Save Honolua Coalition and Trust for Public Land's effort to purchase and protect lands at Honolua Bay (17.8 acres, TMKs (2) 4-2-004-032, (2) 4-2-001-044, (2) 4-1-001-019) in the ahupua'a o Honolua, moku o Kā'anapali, on the island of Maui.

Sierra Club members recreate, gather, and help care for the coastal lands of Honolua and consider these lands as a wahi pana where iwi kupuna, sacred sites, and living cultural practices connect generational families to their kūpuna. Many of our members and supporters also enjoy Honolua Bay's world renown surf breaks, and have worked to protect and manage access.

The marine life in Honolua Bay has been impacted by lack of long term management and we are grateful of the past and present efforts of the Save Honolua Coalition to step into that role and care for one of the last undeveloped coastal landscapes after miles of resort development—a place where cultural connection and sense of place endure.

In 2014, after years of advocacy by the Save Honolua Coalition (SHC) and the community, the State acquired 244 acres to the north of Honolua stream, protecting the land from development in perpetuity. But lands within the bay, to the south of Honolua stream, remain privately owned. Acquiring these lands would allow the community and the Save Honolua Coalition to coordinate conservation of the full riparian corridor, an area suffering from unmanaged visitation, desecration of cultural sites, and reef damage from runoff, overuse, and boat groundings.

We have both local residents and visitors participate in our educational Sierra Club accesses to Honolua Bay and Lipoa point and we know first hand the important conservation goals this proposed purchase can move forward. Taking no action will only let the unmet management needs on the private parcels surrounding the bay get worse, and more difficult to resolve.

Sierra Club Maui has been a partner with SHC in past clean ups and we deeply appreciate their 18 years of advocacy and leadership efforts to develop management and conservation plans that are truly community-based. We urge the full approval of this funding request that will allow for a proven stewardship group to better co-manage Honolua access. Our common goal is a place of peaceful beauty and restorative management actions where residents and visitors alike can honor Honolua's profound cultural and ecological importance.

Mahalo,

Lucienne de Naie, Chairperson Sierra Club, Maui Group PO Box 791180, Paia HI 96779
huelogrl@icloud.com 808 214-0147



January 13, 2026

VIA EMAIL: savehonolua@gmail.com
Save Honolua Coalition

VIA EMAIL: alyse.parker@tpl.org
Trust for Public Land
1164 Bishop Street, Suite 1512
Honolulu, Hawai'i 96813

Surfrider Foundation Maui Chapter
PO 790549
Paia, HI 96779

Re: Support for the protection and purchase of lands at Honolua Bay

To Whom it May Concern,

Surfrider Foundation Maui Chapter strongly supports the Save Honolua Coalition and Trust for Public Land's effort to purchase and protect lands at Honolua Bay (17.8 acres, TMKs (2) 4-2-004-032, (2) 4-2-001-044, (2) 4-1-001-019) in the ahupua'a o Honolua, moku o Kā'anapali, on the island of Maui.

The Surfrider Foundation is a grassroots nonprofit organization dedicated to the protection and enjoyment of the world's ocean, waves, and beaches for all people. We work at the national, state, and local levels to safeguard coastal environments through advocacy, community engagement, and science-based solutions. Through our Clean Water Initiative, Surfrider operates the Blue Water Task Force, a citizen-science water quality monitoring program that regularly tests recreational waters for fecal indicator bacteria. Honolua Bay is one of the regular monitoring sites for the Maui Chapter.

Surfrider has collaborated with and supported the Save Honolua Coalition for over a decade, including during a 2013 campaign opposing a proposed luxury development at Lipoa Point. That effort, led by the Save Honolua Coalition and grounded in community-driven advocacy and stewardship, ultimately secured the protection of approximately 280 acres through a conservation easement.

Honolua is a place deeply cherished by the Maui community and Surfrider Foundation. However, lands within the bay, particularly those south of Honolua Stream, remain privately owned. Acquiring these parcels would enable coordinated conservation of the full riparian corridor—an area currently experiencing unmanaged visitation, degradation of cultural sites,

and reef damage from runoff, overuse, and vessel groundings. Over the past 18 years, the Save Honolua Coalition has led sustained advocacy and planning efforts that envision community-based co-management of Honolua Bay, where access is thoughtfully managed, the bay is resilient and peaceful, and its cultural and ecological significance is honored by residents and visitors alike.

Water quality data further underscores the importance of this acquisition. Honolua Bay frequently exhibits elevated bacteria levels, failing to meet Hawai'i Department of Health recreational water quality standards for enterococcus in 33% of samples collected in 2024. This pattern mirrors trends seen across Hawai'i, where freshwater inputs often carry land-based runoff from upland areas into nearshore waters. These findings highlight the necessity of holistic, ahupua'a-level stewardship. By protecting these lands, restoring riparian areas, and implementing managed visitation, this project presents a meaningful opportunity to improve water quality, protect reef health, and advance the long-term stewardship of this storied place.

Mahalo,

Hanna Lilley
Hawai'i Regional Manager
Surfrider Foundation
hlilley@surfrider.org



PMB175
5095 Napilihau St 109B
Lahaina, HI 96761
808-280-6448
www.hamerinhawaii.org

February 18, 2019

Via Email: savehonolua@gmail.com
Save Honolua Coalition

Via Email: alyse.parker@tpl.org
Trust for Public Land
1164 Bishop Street, Suite 1512
Honolulu, Hawai'i 96813

Re: Support for the protection and purchase of lands at Honolua Bay

To Whom it May Concern,

The Hawaii Association for Marine Education and Research (HAMER) supports the Save Honolua Coalition and Trust for Public Land's efforts to acquire and safeguard lands at Honolua Bay. This 17.8-acre bay, located in the ahupua'a o Honolua, moku o Kā'anapali, Maui, holds significant importance for the Maui community.

Honolua is a place deeply cherished by many. It serves as a wahi pana, where iwi kupuna, sacred sites, and living cultural practices connect generations of families to their ancestors. Beyond its cultural significance, Honolua is renowned as one of the world's premier surf breaks, passionately protected by surfers. Residents hold it in high esteem as one of the last undeveloped coastal landscapes, preserving its cultural connection and sense of place amidst miles of resort development. Visitors, in turn, experience an iconic encounter with Hawai'i's natural beauty.

In 2014, after years of advocacy by the Save Honolua Coalition (SHC) and the community, the State acquired 244 acres north of Honolua stream, safeguarding the land from development indefinitely. However, lands within the bay, south of Honolua stream, remain privately owned. Acquiring these lands would enable the community and SHC to collaborate on the conservation of the entire riparian corridor. This area is currently facing challenges due to unmanaged visitation, desecration of cultural sites, and reef damage caused by runoff, overuse, and boat groundings.

Over the past 18 years, the SHC has spearheaded efforts to develop comprehensive management and conservation plans. These plans envision community-based co-management of Honolua, where access is regulated, the bay remains peaceful and resilient, and both residents and visitors can honor its profound cultural and ecological significance.

HAMER's mission is to conduct sound research to better understand the health and status of our marine resources and develop strategies for their preservation. These findings are communicated to community members, empowering them to create effective policies, raise awareness, and ultimately influence behavior to ensure that our current and future generations benefit from the economic and social advantages of healthy, abundant marine resources.

With its office located in Napili, just five minutes from Honolua Bay, a protected area, HAMER has been at the forefront of our research and educational activities. These include documenting and cataloging the manta ray populations that visit the bay, collaborating closely with other NGOs on water quality monitoring and spinner dolphin acoustic monitoring, and working with the Save Honolua Coalition as part of the Honolua-Mokulē'ia Marine Life Conservation District Conservation Action Plan (CAP). During the COVID-19 pandemic, HAMER conducted systematic drone surveys for the CAP to document the number of boats, snorkelers, and surfers in the bay at various times of day and the locations of turtles, manta rays, spinner dolphins, sharks, and akule schools in response to human presence.

Despite having some of the healthiest coral and fish populations, Honolua Bay, one of the few protected marine preserves in Maui and Hawaii, continues to decline. This decline may be attributed to sediment impacts and overtourism. An improved understanding of how resources can be effectively protected in this area will leave a lasting legacy for future generations and potentially serve as a resource bank for failing neighboring reefs, enabling their restoration.

Our vision for Honolua Bay is to preserve its natural resources in a healthy and thriving state, harmonizing them with local cultural practices and public use.

Mahalo,



Dr. Mark Deakos, PhD
President & Chief Scientist
The Hawaii Association for Marine Education & Research
A 501©3 Organization



HAMER

January 12, 2026

VIA EMAIL: savehonolua@gmail.com
Save Honolua Coalition

VIA EMAIL: alyse.parker@tpl.org
Trust for Public Land
1164 Bishop Street, Suite 1512
Honolulu, Hawai'i 96813

Re: Support for the protection and purchase of lands at Honolua Bay

To Whom it May Concern,

The Nature Conservancy (TNC) would like to express our support for the effort of Save Honolua Coalition (SHC) and Trust for Public Land (TPL) for the acquisition and protection of lands at Honolua Bay (17.8 acres, TMKs (2) 4-2-004-032, (2) 4-2-001-044, (2) 4-1-001-019) in the ahupua'a o Honolua, moku o Kā'anapali, on the island of Maui.

The Conservancy has been supporting the management of Honolua since 2018, initially by facilitating the process of developing the Honolua-Mokulē'ia Marine Life Conservation District (MLCD) Conservation Action Plan (CAP) published in 2020, and more recently convening regular meetings of the CAP team members to follow up on the implementation of the plan. In addition, TNC provided some initial funding for the start-up of SHC's Makai Watch program.

TNC views the acquisition of these parcels by SHC and TPL as consistent with the Goals and Objectives of the CAP, including especially Objective 5: "Reduce the number of people within the MLCD and surrounding areas at peak times to a sustainable level (to be determined by carrying capacity study) by 2025 in order to reduce negative impacts to resources and people." It will also support the implementation of the existing Honolua to Honokōhau Management Plan (HHMP), as well as SHC's proposal for a Honolua Cultural Sanctuary, including riparian corridor restoration, visitor management, protection of cultural sites and perpetuation of cultural practices.

Save Honolua Coalition has been leading efforts to protect this wahi pana for 18 years, and has demonstrated their consistent dedication and growing capacity, and TNC looks forward to continuing to partner with SHC in this process.

Mahalo,

Marian Chau
Associate Director of Conservation

BOARD OF TRUSTEES

Duke E. Ah Moo Kris Billeter Anne S. Carter Ka'iulani de Silva Daniel J. Dunn Dave Eadie Jan Elliott Matt Emerson
Hon. Judith Epstein Dr. Alan M. Friedlander Benjy Garfinkle Puni Jackson David Lassner Brett MacNaughton (Chair)
Janet Montag Alicia Moy Katherine G. Richardson John R. Sabas Bradley E. Smith Julie Smolinski Vern Yamanaka

Ihupani Advisory Council: Christopher J. Benjamin Kenton T. Eldridge Eiichiro Kuwana
Duncan MacNaughton Jean E. Rolles Crystal K. Rose Nathan E. Smith

Founders: Samuel A. Cooke Herbert C. Cornuelle

Column 6	First and Last Name	Is there anything you want to share about why it's important to protect this 'āina? Or what your vision is for the future of this 'āina?
		We support Save Honolua Coalition and Trust for Public Land's efforts to purchase and protect lands at Honolua Bay (TMKs 242004032, 242001044, and 241001019). This 'āina should be protected to enable community management and mālama (care) of the cultural and natural resources of Honolua Bay.
1	Sarah Verrastro	Honolua is a sacred space and it is our kuleana to malama. We can not let the measurable destruction continue. It is time to restore and protect. I am in support of the unified and comprehensive plan.
2	Poppy hudson	
3	Todd Miyazawa	We must all be stewards of this Sacred Land. I have seen too closely how tourism has "loved this area" almost to death. As a SCUBA diver, I have seen first hand the destruction of the reefs in the area and the trash left behind by visitors to the area. I think this is a good move for the bay and a good move for Maui. Mahalo for working towards saving this amazing area for future generations before it is too late.
4	Dylan Payne	Honolua should be preserved for future generations to enjoy.
5	Stacy Lau	To protect this 'Āina for our Keiki
6	Kealoha Santos	Etiquette is what's needed!
7	Kendra Suga	
8	Lauren Tyler	
9	Jeremy Swick	Preserving the beautiful natural bay and coral should be a high priority. Limiting the number of boats visiting should be a priority.
10	Kristine Gaa	When I first came to Maui in 2000, Honolua Bay was remote and very few people were visiting. The coral was close to the shore, and the waters were not muddy like it is now. It was there when I experienced my first sea turtle sighting, and the whole bay was teeming with fish. When I returned back there 22 years later, excited to show my husband the reefs, I found the shoreline to be overcrowded, and the coral reefs were not as vibrant and much further out than before. I cried in the middle of the Bay, so sad about what's happened. I had a long conversation with the caretaker there about it. I 100% make a reservation system to visit this bay to protect the coral, fishes, and other sea creatures that call it home. While I think it's a step in the correct direction, I think commercial boats should never be allowed in this very sacred space.
11	Dimitri	
12	Penni Dauwalder	The plan to save this lovely, sacred place is crucial for protecting and preserving the land and reef. We must be good stewards of this place. Mahalo
13	Max Farncher	
14	Kevin Vance	Culturally and socially relevant
15	Eric Rubin	
16	Gabriella Condie	Right livelihood
17	Tracy Vance	The culture and spirit of the people
18	Suzanne Wolf	
19	Erica Geller	
20	Heather Sheridan Green	
21	Kati Bartlett	
22	Angela Starbuck	Protecting the cultural and natural resources is extremely important to me. History is riddled with the disrespect and decimation of both and we must strive to protect both in the future.
23	Sirena Masket	I want to protect the land and uplift and honor Hawaiian culture.
24	Doreen Deicke	This aina is my favorite place to swim in the world. The marine life is spectacular and should be protected by limiting the boats and the crowds.
25	Jill Bridgeman	As a grateful visitor to Maui, I was deeply moved by how strongly the community cares for its natural resources and the cultural significance of places like Honolua Bay. This 'āina holds meaning far beyond its beauty. It sustains ecosystems, traditions, and a sense of connection that deserves to be protected, not as a resource to be exploited.
26	Mitch Czuczka	With such areas of Natural Beauty, it's so important to preserve that for future generations to learn and grow from it!
27	Gabriella Condie	
28	Kim Kircher	The aina belongs to all people. We need to save these places for the future.
29	Yu Vazques	He al'i ka 'āina, he kauwā ke kanaka
30	Lana Rukab	Always important to protect local spots
31	Nina Iveson	
32	Lauryn Rego	
33	Isabella McCowin	
34	Megan Villa	It's a very special place, I worked for Billabong for many years and we sponsored a women's world tour surfing event there for many years, it is magical and should be stewarded by our community and not a single, private owner.
35	Matt Velzy	Honolua needs to stay undeveloped, period!
36	Hopsing Coon	Agreeing with your whole purpose for our future.
37	Sara Bill	
38	Kaliko Leialoha-Dutro	Honolua Bay is a place I spent my childhood and now want to protect as an adult. The future of this place should be with the community
39	robin ritchie	Create a protection as a State Park with Restrooms and a paid County lifeguard and steward.
40	Tomoko Okazaki	
41	Kainoa Wilson	I think we need to keep this area as pristine and untouched as possible. We need to keep the coastline along that stretch clean and free of the pollution of "progress".
42	Peter deAquino	
43	Payce duryea	The rest of the island is developed more than enough. Gotta keep this prestigious coastline the way it is.
44	Jsea Dudoit	my goal is to protect and nuture the aina as most as i can, and if i can do that by helping my community and help signing petitions then thats what im going to do

Column 6	First and Last Name	Is there anything you want to share about why it's important to protect this 'āina? Or what your vision is for the future of this 'āina?
		We support Save Honolua Coalition and Trust for Public Land's efforts to purchase and protect lands at Honolua Bay (TMKs 242004032, 242001044, and 241001019). This 'āina should be protected to enable community management and mālama (care) of the cultural and natural resources of Honolua Bay.
45	Simone Aki	
46	Mahana Walters	Enough is enough. Keep what is left undeveloped, for the keiki.
47	Richard Ho	Commercial Tourism activities continue to ruin our ecosystems & Historical Native places. It's time to put a stop to this now.
48	Valerie C	
49	mary saeteurn	
50	Carmela Resuma	
51	Mahealani Phillips	Give it back to the people
52	Janelle Brown	Protection from overuse
53	Leiani hurtado bennet	Keep land in stewards hands
54	Mary Cea	
55	Donell Thomas	The environmental and cultural significance of this 'āina must be protected for future generations
56	Susan Frett	This area needs management to prevent further degradation. I hope that people that go to this area in the future can be educated about the area and treat it with respect.
57	Christina Stetenfeld	No private ownership, keep community based stewardship. Please prioritize environmental protection, community use, and cultural over commercial use.
58	Danielle Fisher	Land back to indigenous peoples
59	Kiva Rivers	Protection and preservation for this generation and all the generations to come makes total sense to do for our island home on the upper westside. Mahalo!
60	buck romero	Aina should belong to & be protected by Kanaka
61	Tide Rivers	
62	Lilly C	Honolua must be preserved for all future generations
63	Mona Cruz	It is important to not only protect this Aina but all of them I feel because this is where our roots start, where our heritage and heart began. We must treat our land with aloha like our ancestors before, it breaks my heart to see how unconnected to the land manly who claim to be kanaka are nowadays.. I'd love to see more of us getting together to protect our land for our further keiki and further more. Mahalo
64	Robert "Shawn" Reid	Honolua is a culturally significant, extremely sacred place and must be preserved and protected in perpetuity for future generations!! Please be pono! Malama Honolua!
65	Benjamin Williams	To give for the future generations a chance to have what we have now. The feeling you have at the end of the day. Everyone's is more happy, It brings our community closer together.
66	Benjamin Williams	To give for the future generations a chance to have what we have now. The feeling you have at the end of the day. Everyone's is more happy, It brings our community closer together.
67	Anne Shiparski	Honolua is an irreplaceable cultural and ecological treasure. Protecting this 'āina honors the kupuna who cared for it and ensures that future generations can continue to learn from and be nourished by this place. Community stewardship places the land and ocean first, which is how Honolua has survived this long, and how it should remain.
68	Leon Mosher	
69	Marisa Madison	
70	Angelika Serafica	It's beauty is irreplaceable, and once destroyed , unreplaceable
71	Samuel Atchison	This island is already exploited enough for tourism. And it is well known that it's natural environment is the reason people come out here. Don't let greed destroy the last resource we have left.
72	August Gebb	Keep this land undeveloped for future generations to enjoy ! Protect the reef by diverting run off away from the ocean ! Deny boat access. Deny housing etc.. plant coconut for erosion and Naupaka
73	Erin Bell	
74	Christopher Breckels	No more development north of Kapalua. Need to protect the watershed.
75	Kiope Raymond	
76	matthew mercado	Honolua is a sacred valley. A deserved to be protected
77	Matt scott	
78	Matt scott	
79	Matt scott	
80	Marunui Tapii	To see our kūpuna(s) and keiki(s) gathering to share insights of the past and intertwine with the future. It could look like literally making a real-life Ahupua'a system, fishing ponds, where our wahine(s) from old to young a hale for us to share within wāhine health *waillehua (menstrual) hāpai, to hānau (birth and aftercare).
81	April Willing	I live in Honokowai, and I frequently go to honolua to walk, swim, fish, and connect with the 'āina. There are fewer and fewer places on the west side that are free from the tourist crowds and the impact they have on the land. Honolua needs to be returned to kānaka that can mālama 'āina and return this once peaceful and quiet and sacred land to the people. There needs to be more and more places off limits to ogling eyes and price tags on priceless scarce resources. Pau already! Return the land to the community and those who will love her and care for her and take care of us in return by growing local food!!
82	Kathleen Roberts	I support this mission to protect Honolua Bay
83	Roy Yamada	I support this plan to protect Honolua
84	Malia Kaai-Barrett	I was raised in West Maui. I drove by Honolua to and from school, work almost daily all my growing up years. Save Honolua!!
85	Tehe Spencer	To protect the land and community from outside influence. We need to preserve what we still have before it's all gone.
86	Tamara Paltin	Community based mai
87	Tina Strasser	Been a supporter of Save Honolua since the beginning :)

Column 6	First and Last Name	Is there anything you want to share about why it's important to protect this 'āina? Or what your vision is for the future of this 'āina?
		We support Save Honolua Coalition and Trust for Public Land's efforts to purchase and protect lands at Honolua Bay (TMKs 242004032, 242001044, and 241001019). This 'āina should be protected to enable community management and mālama (care) of the cultural and natural resources of Honolua Bay.
88	Gina Larson	
89	Merritt kaufman	
90	Anson Pakaki	
91	Sarahlynn Bower	
92	Charlie Osborn	Make this happen!
93	Elizabeth Kashiwabara	What's left of Maui needs to be preserved especially Honolua Bay
94	dolores burke	We have to save what little is left of open space for future generations
95	Jordan Hocker	I support the stewardship and protection efforts of Save Honolua Coalition.
96	Kai Nishiki	
97	Maelani Lee	Honolua is more than a beautiful place – it is a living, breathing 'āina that carries the stories of our ancestors and sustains life for future generations. Protecting this 'āina means honoring kuleana: caring for the land as it has cared for us. Honolua's reefs, forests, and waters are deeply connected, and when one is harmed, the whole system feels it. My vision for the future of Honolua is an 'āina that remains healthy, accessible, and respected – where cultural practices are preserved, native ecosystems are restored, and education guides stewardship. I hope future generations can experience Honolua not just as a destination, but as a place of learning, reverence, and balance between people and nature. By protecting Honolua today, we ensure that its mana, beauty, and abundance endure for generations to come.
98	Crissy Palmieri	
99	Charles Nix	
100	Jackie Keefe	Mauka to makai reforestation
101	John Ahlbrecht	Look at what is directly encroaching adjacent to this parcel. That will likely continue. I am no longer able to surf honolua bay(age). But I want to see people have free unfettered access to that gem. Also the property itself maintained as natural environment land cover with a few trails and actual over abundance of parking. Available to access surfing. And the property itself.
102	Janet Spreiter	Too much lost to tourism and developers
103	jon cuevas	all hawaiian lands should be considered sacred and should be protected.
104	Blake Nowack	
105	Danielle Gaviglio	
106	Karen Comcowich	This beautiful open space protects the coral reef and provides a place to connect with the beauty and peace of Maui.
107	Herman Kauuamo	
108	Greg Rylsky	Restoration and conservation.
109	Brigid Libitsky	We believe in order to preserve the bay boat must stop coming
110	Brissa Christophersen	land back to native peoples are important and benefit everyone. restoration of this land also allows for restoration of relationships (people to place, people to people, etc.)
111	Leslie Resnick	
112	Michelle Fischer	
113	Deidre Rockett	
114	Wesley keahi	Preservation
115	Marla Blazer	Honolua is a beautiful area & needs to be kept as is for future generations to enjoy as well.
116	Laura Fisher	Stunning beauty. Important to protect and steward this land
117	Darrin Burgess	Trust for Public Land will respect and protect our cultural history and our aina. I feel that Honolua should be a recognized puuhonua. Every aspect of protecting and promoting Hawaiian history benefits our entire state visitor experience and our kamaaina.
118	Sarah Freistat Pajimola	The community has been fighting so hard, for so long for this moment. Please finalize the purchase and stewardship plan to move forward for the betterment of the community and the 'āina.
119	Holly Paulman	
120	Shane Presswood	Its been overan and disrespected enough!!
121	Leonard Nakoa	Tired of over TOURISM ruining our resources
122	Charles Fleck	Please protect it!
123	Carrie Ann Shirota	
124	Katy Meza	
125	Courtney Bruch	
126	Carla Allison	
127	li	My vision for the future is seeing my Mo'o being able to enjoy this 'Aina without hassle of tourism. To be a better Hawai'i and this is where it starts, taking care of our 'Aina like it will take care of our Keiki.
128	Maile Kā'ai-Cockett	
129	Kalisi Piutau	
130	Jennifer Cox	We cannot trust private for-profit entities to prioritize anything but their profit; empowering community management through this purchase & protection gives Honolua Bay the best chance of its natural and cultural preservation for current and future generations.

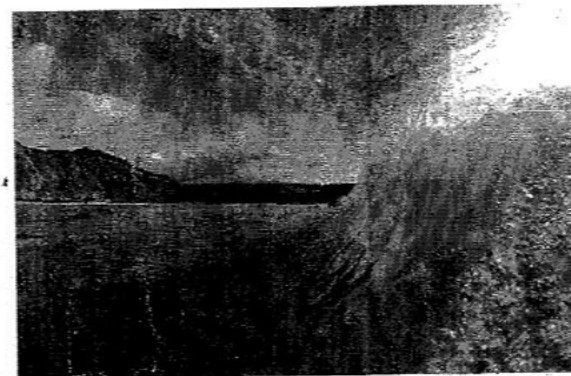
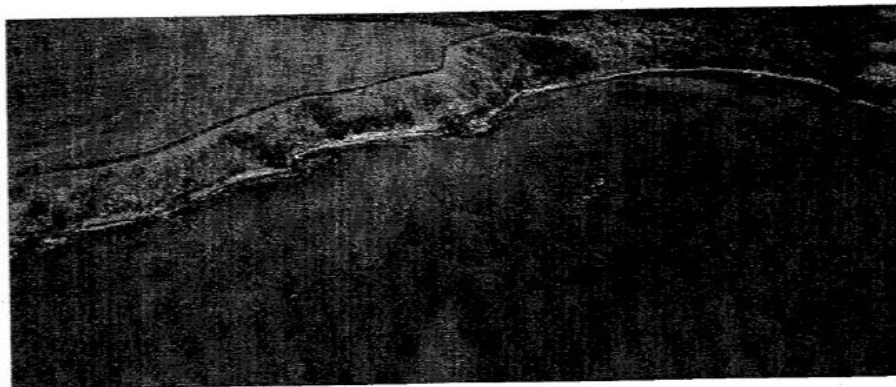
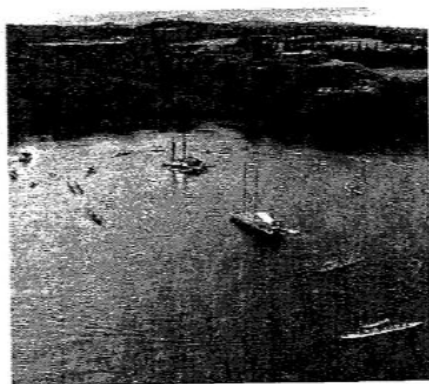
Column 6	First and Last Name	Is there anything you want to share about why it's important to protect this 'āina? Or what your vision is for the future of this 'āina?
		We support Save Honolua Coalition and Trust for Public Land's efforts to purchase and protect lands at Honolua Bay (TMKs 242004032, 242001044, and 241001019). This 'āina should be protected to enable community management and mālama (care) of the cultural and natural resources of Honolua Bay.
131	Kaylee Sheller	This aina is treasured and cherished by locals and visitors alike. It is to be protected by the people who know it best, the kamaaina. I believe that Save Honolua Coalition and Trust for Public Land are our best option for the future of this aina.
132	Stoph Kasak	
133	Carol Lee Kamekon	
134	Marta Greenleaf	Protection
135	Monica Matzek	We need space to rest our minds.
136	Curtis Snyder	One of the most beautiful, natural places in the world! Let's keep it that way!
137	Jeremy Levien	
138	Patti Souza	
139	Mariah Frias	Save this little piece of heaven on the westside, for families and generations to come.
140	C Chen Reeder	
141	Stacey Moniz	This is a significant place that needs to be protected in perpetuity. Mahalo for all the hard work to make this happen.
142	Margaret Dickison	Needs to stay out of private hands!
143	Marty Martins	It's all important and needs to be protected.
144	shannin solie	<p>this location has been abused for too long. i am a diver and i feel deeply connected to the forest and water. i have long tried to protect honolua with my singular voice in a boots-on-the-ground manner – asking people not to litter and preferably not climb and break the trees and definitely not to stand on the reef. we must raise voices with the community and enforce change.</p> <p>i have developed a prototype of a mobile app to help with tourist behavior, it's www.rootedhawaii.org. we could work together to either give guidelines or enact the necessary change the community needs to see at honolua with both visitor boat and foot traffic and impact, as well as charter impact such as the incident with hula girl.</p> <p>i will message you on IG and i will spend time reading your proposals thoroughly.</p> <p>aloha shannin 808 437 6853</p>
145	Dylan McCall	I hope my kids, my friend's kids, my grandkids and so on get to see Honolua in its natural beauty, not million dollar homes or a hotel or a tourist attraction unless it's for its natural beauty
146	Noelani Ahia	
147	Gayle Shufeldt	Need to save this beautiful spot from development
148	Carlos Rock	I have been coming to this beautiful Part of the island and surfing this even more Beautiful wave since I was a kid. Seeing it all developed would be such a shame.
149	Christine Keahi	
150	Moses Keahi	
151	Michele Armstrong	
152	Margaret Conner	Hawaiian lands in Hawaiian hands.
153	Kīri Kaho'ohanohano	Crucial to protect these places
154	Calea Finch	Future generations depend on us to protect this !
155	Tiffany Chapman	
156	Tere Patterson	
157	Jules Givot	Kuleana
158	Serena Alexander	Honolua should be managed and mālama by those who truly know our 'āina and how to aloha 'āina in word and deed.
159	Priscilla Stuckey	
160	Carl Kobayashi	
161	Amber Coontz	
162	Bart Zawacki	It should be used and shared by the community of Maui for meeting, ocean activities for community usage, and care for future access for all Maui communities to enjoy
163	Tom Gourley	The 'Āina is limited. It needs protection from future invasion.
164	Tadia Rice	
165	Sean Curran	There are certain areas that should never be developed and this is one of them!
166	Lisa Yamada	Kanaka lands should stay in Kanaka hands!!!
167	Jasmine Ryan	
168	Edna Bumanglag	We need to protect the Aina
169	Josette Kaleo Akim Hanoh	My papa took me as a little girl to this `āina and showed me how I am a keiki of this `āina. It is my kuleana to stand with the kanaka to protect this `āina. I recently went home to Maui and visited Honolua. I felt and witnessed the disrespect, overwhelming use and misuse of the `āina. That place is a wahi pana, meant for protection and reverence.

Column 6	First and Last Name	Is there anything you want to share about why it's important to protect this 'āina? Or what your vision is for the future of this 'āina?
		We support Save Honolua Coalition and Trust for Public Land's efforts to purchase and protect lands at Honolua Bay (TMKs 242004032, 242001044, and 241001019). This 'āina should be protected to enable community management and mālama (care) of the cultural and natural resources of Honolua Bay.
170	Christian O'Connor	This Sacred Ahupua'a needs protection and restoration, where Fresh Wai water used to run from the Valley through rivers to the Ocean feeding old growth trees makai oceanside of the road. The increased tourism to Honolua bay via 4x4 Rental jeeps destroying dirt roads above cliff which should be for local families to Access Fishing and Surfing but roads so destroyed from over tourism huge divots chasms in road, have to park and walk down road if you dont have 4 wheel drive. Upper and lower accesses to Honolua bay need Monitoring by local stewards to ensure the fragile ecosystem is not destroyed by the numerous businesses using Honolua bay for profit ie. Tourist Weddings, Photo shoots and Snorkeling tours.
171	Rofelyn torricer	
172	Mariana pineda	
173	Burt Hood	Honolua needs to be protected. Always
174	Mokihana Gushi	
175	Mark Rudd	Protect
176	George Burnette	
177	John Fitzpatrick	If we truly care about special places like Honolua, we will buy and protect lands Mauka to Makai and keep them out of the hands of greedy billionaires that just need another empty vacation house.
178	Beth Zivitski	
179	Tiffany olson	For our children's children
180	Aubrey Sullivan	I was born and raised here, and I have witnessed how this 'āina has changed over time. While growth is inevitable, much of that change has brought increased pressure from tourism and development, often at the expense of balance, access, and care for the land and ocean. Seeing these shifts firsthand has strengthened my commitment to protecting what remains and being more intentional about how this 'āina is treated moving forward.
181	Jenae Taguiped	As a mom, this responsibility feels even deeper. I want my child to grow up with a relationship to the land and ocean that is rooted in respect, stewardship, and reciprocity rather than consumption. My husband surfs here daily, and this place is his favorite in the world. Watching how connected he is to this ocean reminds me that this 'āina is not just a resource, but a source of grounding, healing, and identity. My vision for the future of this 'āina is one of balance and care. A place that is thoughtfully tended, protected from overuse, and honored so that families, keiki, and the next generations can continue to connect with it in a meaningful and sustainable way.
182	Petra Gilmore	
183	Susie Richter	LOVE RESPECT PROTECT! For the past, present, and future generations
184	Justin	It is one of my favorite places in the world and I would love for my daughter to also grow up with it as well.
185	robb petty	Help prevent development
186	Brittany Moreno	
187	Stephen kroon	
188	Brett Whitford	
189	Hī'ilei Casco	
190	Nicki Tedesco	The Honolua coalition has Honolua bay and its future as a priority and will always make the health of the land and the community its priority over other underlying motives of outside investors or developers.
191	Katherine Wilson	Malama Aina Malama Kakou "The life of the land is perpetuated in righteousness" (Ua Mau ke Ea o ka 'Āina i ka Pono) is Hawaii's state motto, signifying that the well-being of the land and its people (the 'āina, or "that which feeds") depends on justice, balance, and proper care (pono); it's a call to sustainability, cultural integrity, and sovereignty, urging people to act righteously to ensure the land's continued life and prosperity for future generations. Key Meanings Connection to Land & People: It highlights the inseparable bond where the land's health directly affects the people, and vice versa, emphasizing stewardship (Mālama ka 'Āina). "Pono" (Righteousness): This isn't just moral goodness but also balance, fairness, integrity, and completeness, requiring people to live in harmony with nature and each other. "Ea" (Life/Sovereignty): While translated as "life," "ea" also means sovereignty, linking the motto to the historical regaining of Hawaiian sovereignty in 1843, adding a layer of political and cultural self-determination. Call to Action: It serves as a reminder for civic engagement, conservation, and protecting indigenous culture and resources.
192	Mapuana Kahonuahine	The Save Honolua Coalition has established a clear management plan that prioritizes environmental protection, community use, and cultural usage over commercial use. The Save Honolua Coalition is committed to partnering with the Division of State Parks, the community, including the Lāhainā Strong organization, the lineal descendants, and all stakeholders to provide urgently needed, coordinated stewardship of Honolua Bay. The property must be created as a community-based stewardship.
193	Kathy Lomeli	
194	Andrew Isoda	
195	Barbara O'Connor	Please keep commercial businesses out of the bay!
196	Ameena Dahiya	The 'āina is our kuleana to protect by all costs. Humans cause enough distraction to this planet and when enough is enough it's time to stand for the kapuna, kamaaina, e kanaka.
197	Rita Lei Medina	
198	Erika Lechuga DiSalvo	
199	Angus McKelvey	
200	Robin Knox	
201	kristine kane	
202	Frances Salvato	

Column 6	First and Last Name	Is there anything you want to share about why it's important to protect this 'āina? Or what your vision is for the future of this 'āina?
		We support Save Honolua Coalition and Trust for Public Land's efforts to purchase and protect lands at Honolua Bay (TMKs 242004032, 242001044, and 241001019). This 'āina should be protected to enable community management and mālama (care) of the cultural and natural resources of Honolua Bay.
203	Adrian & Vanessa McClen	I See less and less Local people on the Island it saddens me we moved here in 2021 and one of the amazing things that drawn us to Maui was the strong culture and the beauty of this Island, we have donated to Maui Elementary schools, we continue to give before and after the fire however we noticed of course the Aloha is gone understandable. With our continued desire to help build relationships, support, and learn about the Hawaiian culture my fear is the drive is demising and this Island feels and looks different. This will allow the Hawaiian culture and community to continue to be in safe hands, and live with the understanding of the importance the Aina and humanity the People. Not Billion, millionaire dominating this Island with a mindset that is not conducive to the Hawaiian culture.
204	Maya Bendotoff	What an excellent way to create a refuge for Hawaiian families in the area while still allowing visitor access
205	Dayan Dunnick	Protection of (and relationship with) the land is essential for our communities and future generations
206	Taylor	
207	Doug Oden	Leave the natural beauty as it is.
208	Jaclyn Woznicki	
209	Julia Pisa	Stewardship of the land is the highest priority and must be supported.
210	Terrance Hill	Save Honolua
211	Michael Leventhal	
212	April Leventhal	I just want to see this land protected, restored, and preserved.
213	Beau Petrone	
214	Emmalia Dunn	SAVE HONOLUA BAY!!!!
215	Brooke Whitehead	
216	Zoe Bishop	The Aina should be protected and local families should be in charge of its care.
217	Yukie Murata	The area has to be protected
218	Audrey Tanodra	Malama Pono! We have fewer and fewer natural spaces on island left to preserve, it's crucial to the future generations and all life!
219	Audrey Tanodra	Malama Pono! We have fewer and fewer natural spaces on island left to preserve, it's crucial to the future generations and all life!
220	Audrey Tanodra	Malama Pono! We have fewer and fewer natural spaces on island left to preserve, it's crucial to the future generations and all life!
221	Christine Esquer	
222	Paul Jimenez	
223	Alyse	Hawaii needs protection from the tourists.
224	Leslie Jose	Once it's gone from this kind of community involvement & protection it's gone. It is the Pono thing today
225	Sherri Mora	Protection from development
226	Stephen West	The International Longshore Warehouse Union maui Division stands in solidarity with all that wish to preserve this land. This is our top priority. We must do this for our children and their children's children to come..
227	Mark Kaufman	It's important to preserve this 'sins for future generations.
228	Ronald Fujiyoshi	
229	Leimana H	
230	Francine Aarona	It is our Kuleana handed down from our Kūpuna
231	Teresa milkovich	
232	Nicole Bendotoff	
233	Jeanne Harmon	Return this land to its purpose and to the people who will care for it forever.
234	Mindi Goegg	
235	Donna Bendotoff	Important to protect land. We have family living here
236	Noelani Vicente	Protect ecology for future generations to enjoy
237	Taylor Jenkins	
238	Anna Zagora	
239	Nalei Sampson	Mahalo for the work you do to protect and mālama this 'āina
240	Destiny kucko	Hawaiian lands in Hawaiian hands.
241	Kele-jo Kahai	Because this is our home. N we need to protect all its natural beauty and our home
242	Melody Torres	
243	Mikey Burke	
244	Taryn Cabingas	
245	Michael Peden	Honolua Bay should be protected so it stays healthy accessible and respected for future generations. Conservation here is about kuleana caring for the land and honoring its cultural and natural importance . Mahalo for your kōkua
246	Don Blair	This island is very small and we don't need more homes that require more of the limited resources on the island. Honolua bay needs protection.
247	Sandy Blair	
248	Lauren Palakiko	Mauka to makai, Honolua is a very special and sacred place to many of us. Many of our ancestors are laid to rest there. Please protect Honolua!

Column 6	First and Last Name	Is there anything you want to share about why it's important to protect this 'āina? Or what your vision is for the future of this 'āina?
		We support Save Honolua Coalition and Trust for Public Land's efforts to purchase and protect lands at Honolua Bay (TMKs 242004032, 242001044, and 241001019). This 'āina should be protected to enable community management and mālama (care) of the cultural and natural resources of Honolua Bay.
249	Charlie Palakiko	
250	Kūpa'a Palakiko	My tūtū are laid to rest there. Please protect Honolua!
251	Joel Timmins	It's a fish sanctuary, also my father pioneered surfing here and it is one of the greatest waves in the world Tom Curren told me while surfing here with me* there's really nothing like this in the world,* and I have to agree with him.
252	DEBORA DEAN	The land should remain part of the Hawaiian heritage
253	Tri Flores	
254	Jinlu Yuan	
255	Kevin Lammer	Malama, protect, and preserve Honolua.
256	Jennifer Reed	Honolua is sacred land. Preserve it for future generations
257	Naomi Van der Auwera	
258	Mia	Protect this land to preserve culture and provide a community space for everyone that loves Honolua . This is a place used by so many and should not be for just a small private entity but for everyone . An ideal vision would be paying homage to the history of Honolua and reviving the cultural importance of this area. Returning land to the lineal descendants of Honolua, returning water to the streams, restoring lo'i kalo and native forestry, are just a few major ideas that can literally be applied all across the islands.
259	Brandy Takiguchi	Also, for those who regularly surf or snorkel in this bay-- how can we involve them? More community cleanups and more advertising FOR those cleanups, if we missed a few already bc word of mouth only goes so far. Post in all surf/fishing/snorkel shops/surf areas!!!!
260	Anis Bel	
261	Karyn Kanekoa	Would love to see this land out of private hands. I do, however, have reservations on your stewardship plans. Mahalo!
262	Aes Ferrer	Leave the land untouched and away from greedy developers.
263	Aes Ferrer	Leave the land untouched and away from greedy developers.
264	Jenn reed	This is one of a kind land and it needs to be treated as such. Mālama 'Āina
265	Athena Roebuck	Honolua Bay should be protected for it's natural beauty, resources, and culture for all the generations to come and enjoy!!
266	Rose Crichton	Protecting this 'āina is important because it holds more than land it holds our history, our identity, and our responsibility to future generations. As people of the middle of the Pacific, we are uniquely positioned. We sit at the crossroads of cultures, ideas, and modern progress, and with that comes the kuleana to lead by example. My vision for the future of this 'āina is one of balance. Balance between development and preservation. Balance between modern-day living and the deep need for open, natural spaces where our community can breathe, heal, and reconnect. Progress does not have to mean erasing what grounds us. Instead, it should reflect our ability to move forward while staying rooted in 'ike kupuna and respect for the natural world. Here in the middle of the Pacific, the world is watching how we choose to care for what we've been entrusted with. We have the opportunity and the responsibility to pave a way that shows it is possible to thrive economically while still protecting spaces that offer refuge, connection, and belonging. Open spaces are not empty; they are vital. They are where people find grounding, clarity, and a sense of place in an increasingly fast and disconnected world. By protecting this 'āina, we are choosing to be leaders. We are choosing to demonstrate that true progress includes mālama 'āina, community well-being, and long-term thinking. Our actions today shape the legacy we leave behind, and I believe that legacy should show that we knew how to care for the land, for each other, and for the generations yet to come.
267	Bailey Lawrence	
268	Spencer Hyde	The big real estate development companies like A&B and ML&P have not been good stewards of our environment and that has cost everyone's safety, security, and well-being. We need to empower organizations who care deeply about the 'āina and are not profiteering, especially as we face an uncertain climate future.
269	Robert D Ackerly	Harmony With Nature Peace On Earth Protect Hawaiian sacred land.

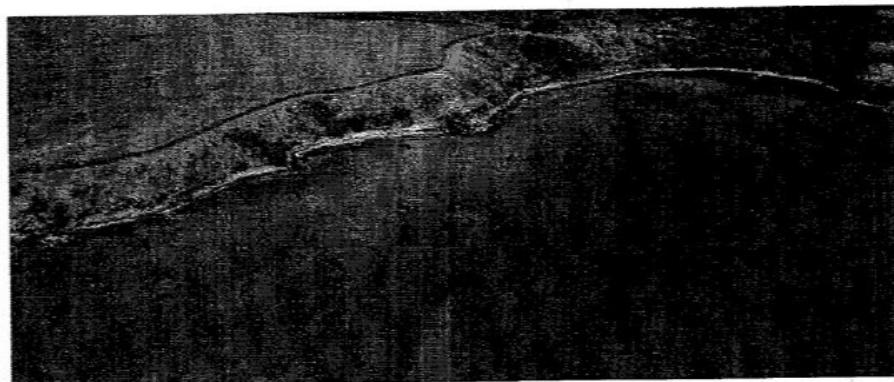
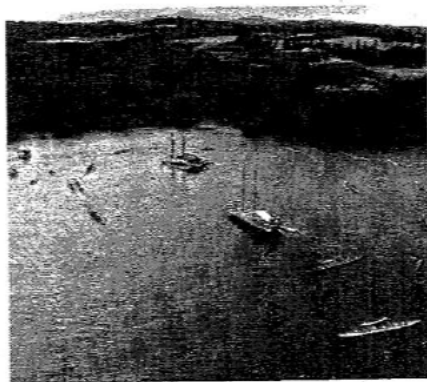
Community Support to Protect Honolulu Bay



We support Save Honolulu Coalition and Trust for Public Land's efforts to purchase and protect lands at Honolulu Bay (TMKs 242004032, 242001044, and 242001044). This 'āina should be protected to enable community management and mālama (care) of the cultural and natural resources of Honolulu Bay.

FIRST & LAST NAME – PLEASE PRINT CLEARLY	WHERE DO YOU LIVE?	SEND UPDATES Y/N	EMAIL
Walter Karamu	Waiehu Kou		
KANILWA KAMAMU	Waiehu Valley Rd	Y	
CANDELA RUSSO	WEST		
MARTIN RUSSO	WEST		
John Surdi	Seattle	Y	
Catherine Goss	PHX, AZ	Y	
Barb Surdi	Seattle, WA	Y	
Bridget Robitaille	Riverside, CA		
Nedine van der Zalm	The Netherlands	Y	

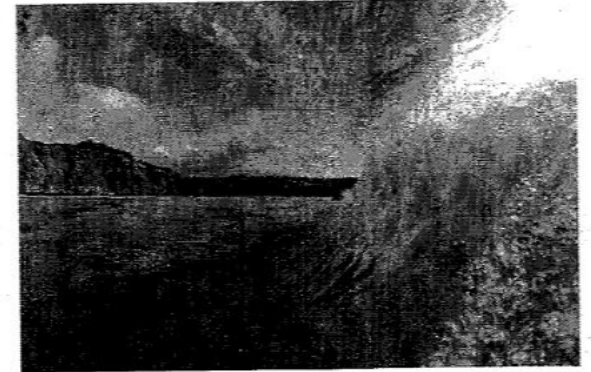
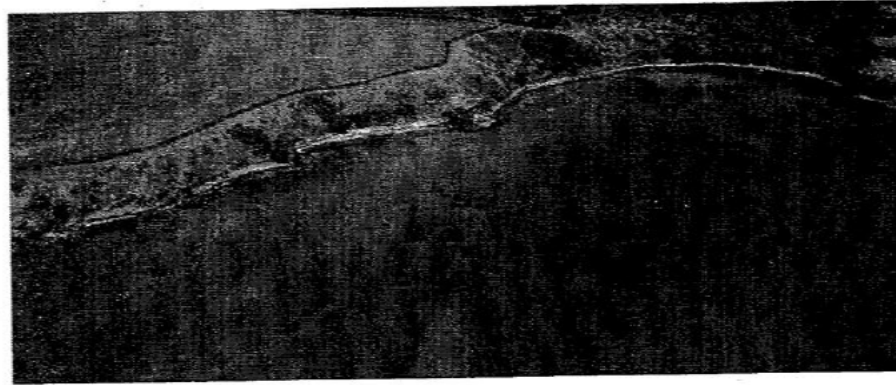
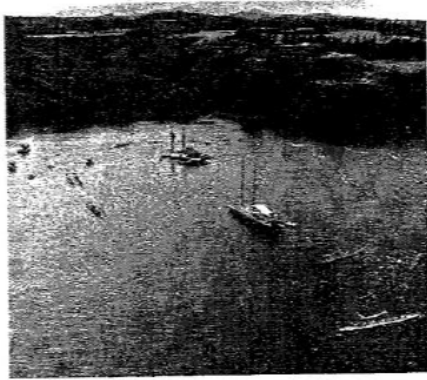
Community Support to Protect Honolulu Bay



We support Save Honolulu Coalition and Trust for Public Land's efforts to purchase and protect lands at Honolulu Bay (TMKs 242004032, 242001044, and 242001044). This 'āina should be protected to enable community management and mālama (care) of the cultural and natural resources of Honolulu Bay.

FIRST & LAST NAME – PLEASE PRINT CLEARLY	WHERE DO YOU LIVE?	SEND UPDATES Y/N	EMAIL
ALISON YOUNG	PUKALANI	Y	
LIZZIE DOYLE	NAAIM ^{MELBOURNE} AUSTRALIA	Y	
DONOVAN KANANI CABEBE	HEMOKUKILILA/KANZI	Y	
Robert West	California, LA.	Y	
Molly Hajkova	Minnesota	Y	
Lukas Plonic	Twin Cities	Y	
NOAH STONE	OJA OJA WURUNG COUNTRY, AUSTRALIA	Y	
NODY BERTI	SOUTH, WA.	Y	
MARK CONLEY	KIHEI	Y	

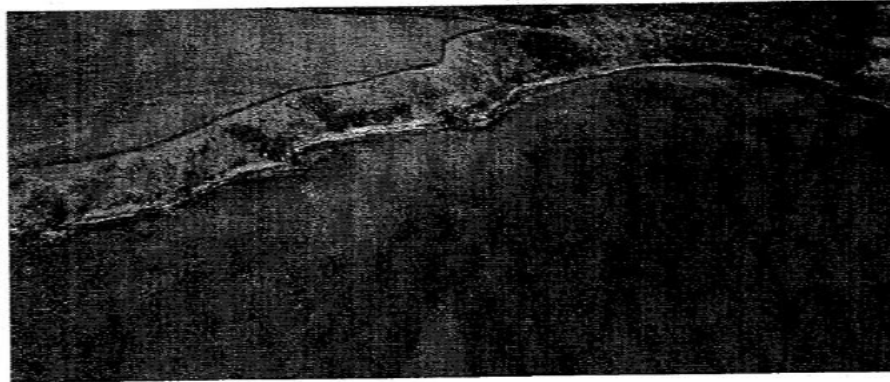
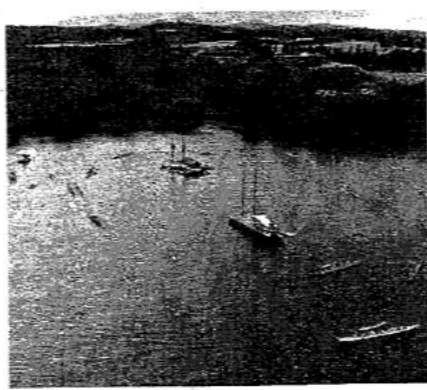
Community Support to Protect Honolua Bay



We support Save Honolua Coalition and Trust for Public Land's efforts to purchase and protect lands at Honolua Bay (TMKs 242004032, 242001044, and 242001044). This 'āina should be protected to enable community management and mālama (care) of the cultural and natural resources of Honolua Bay.

FIRST & LAST NAME – PLEASE PRINT CLEARLY	WHERE DO YOU LIVE?	SEND UPDATES Y/N	EMAIL
Pamela Rhea Peake	Pukalani, Maui	Y	
Jorge Jauregui Soto	Stockton, California	Y	
Jennifer Ruth Schmidt	Haiku, Hawaii	Y	
Rodrigo Daniel Saggior	Huntington Beach, California	Y	
Rebecca LaFaver	Vermont	Y	
Julia Gregory	Kipahulu, Maui	Y	
Lauren Roche	Lahaina, Maui	Y	

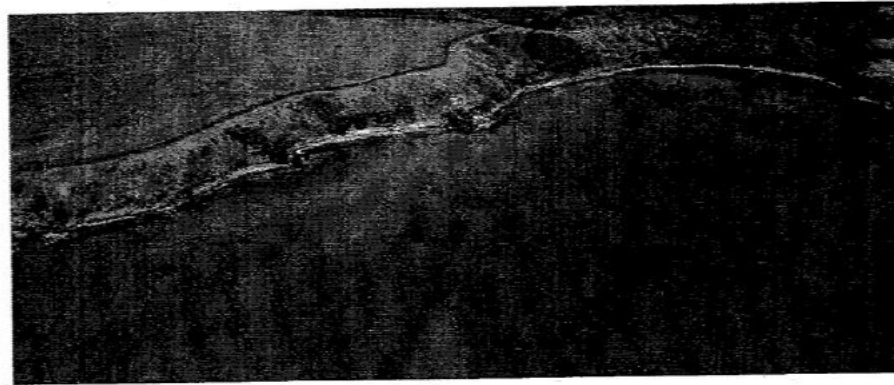
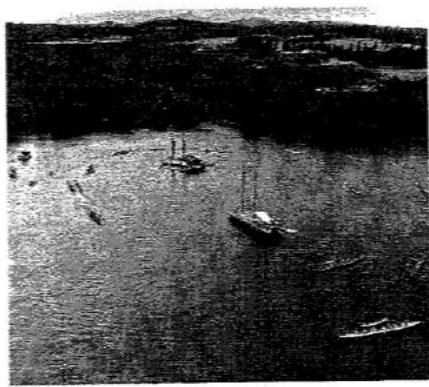
Community Support to Protect Honolulu Bay



We support Save Honolulu Coalition and Trust for Public Land's efforts to purchase and protect lands at Honolulu Bay (TMKs 242004032, 242001044, and 242001044). This 'āina should be protected to enable community management and mālama (care) of the cultural and natural resources of Honolulu Bay.

FIRST & LAST NAME – PLEASE PRINT CLEARLY	WHERE DO YOU LIVE?	SEND UPDATES Y/N	EMAIL
JESSICA LABEL-COTE	HAIKU	Y	
Alex Liggard	Brooklyn NY + Haiku	Y Y	
Tait Erichsen	Maui Waikuku	Y	
C. ANDREW SPITZ	NEW JERSEY	Y	
Luca D. Phan	K. hei	Y	
Dino Miranda	Kula	Y	
Melz Doan	Kahakuloa	N	
Auntie Irene Yoakum	Wailuku	Y	
EWA KATA	Hali'imaile	Y	

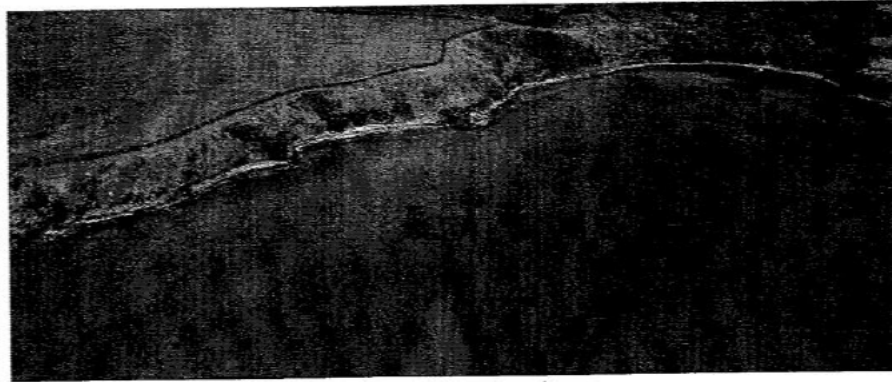
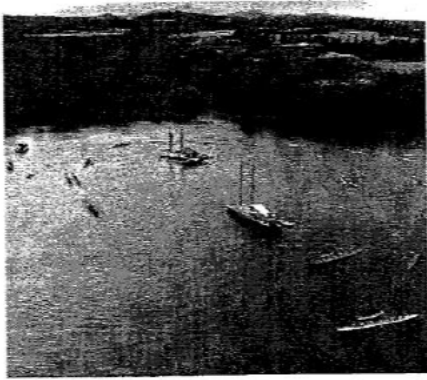
Community Support to Protect Honolulu Bay



We support Save Honolulu Coalition and Trust for Public Land's efforts to purchase and protect lands at Honolulu Bay (TMKs 242004032, 242001044, and 242001044). This 'āina should be protected to enable community management and mālama (care) of the cultural and natural resources of Honolulu Bay. 019

FIRST & LAST NAME – PLEASE PRINT CLEARLY	WHERE DO YOU LIVE?	SEND UPDATES Y/N	EMAIL
Sarah Verrastro	Lahaina	Y	
Mary Robinson	Lahaina	✓	
August Weinstein	Honolulu bay	✓	
Scorry Miller	Paokukalo	✓	
TRAVIS MATTESON	Napili	✓	
Kemi Flores	Napili	Y	
B-Boof	NAPILI	Y	
BRIAN GARCIA	NAPILI	✓	
Melina Hight	Lahaina	Y	

Community Support to Protect Honolulu Bay



We support Save Honolulu Coalition and Trust for Public Land's efforts to purchase and protect lands at Honolulu Bay (TMKs 242004032, 242001044, and 242001044). This 'āina should be protected to enable community management and mālama (care) of the cultural and natural resources of Honolulu Bay.

FIRST & LAST NAME – PLEASE PRINT CLEARLY	WHERE DO YOU LIVE?	SEND UPDATES Y/N	EMAIL
Lana Albright	Lehaina	Yes	[REDACTED]
Mark Deakos	Napili	Y	

Save Honolua Coalition and Trust for Public Land are working to purchase and protect lands at Honolua Bay. Save Honolua Coalition is committed to partnering with State Parks, the community, lineal descendants, and other stakeholders to provide coordinated, urgently needed stewardship.

PETITION: I support Save Honolua Coalition and Trust for Public Land's efforts to purchase and protect lands at Honolua Bay (TMKs 242004032, 242001044, and 242001019). This 'āina should be protected to enable community management and mālama (care) of the cultural and natural resources of Honolua Bay.

<u>First/Last Name</u>	<u>Zip Code</u>	<u>Email</u>	<u>Signature</u>
Waiuku Winchester	96744		
Chase Burnes	96779		
Micah Nickens	96708		
Kenyon Smith	96790		
Thomas Gann	96768		
Sule Gordon	96761		
Johnny Lingao	96753		
Kapono Nahiwa	96734		
Freddy Hoi Hoi	96740		
Derrick Kellahue	96701		
Dina Miranda	96712		

